

PRODUCT

CATALOG

2024



ALIVE
INNOVATIONS



CUSTOM
COMPLETE

Contact info:
sales@aliveinnovations.com

General Information:
info@aliveinnovations.com

Orders:
orders@aliveinnovations.com

Phone number: 800-454-1920

Version: 03.22.24

About Us

Alive Innovations – Integrated Healing Technologies for Naturopaths, Chiropractors, & Wellness Centers equipping naturopathic doctors, holistic healers, chiropractors, and wellness centers with the most advanced diagnostic equipment and natural treatment plans. in the industry. At Alive Innovations, we scour the planet, investigating new advances in allopathic and holistic treatments from the brightest minds and innovators in the industry with one purpose in mind: to bring you the latest technology to assist you in caring for your patients. Our state-of-the-art holistic healing equipment, historical data, and individualized treatment plans allow doctors and practitioners to digitally scan and analyze each patient individually. Alive Innovations has created an application that enables you, as the practitioner, to custom create a supplement for any patient.



- + NO FILLERS
- + INNOVATIVE
- + NATURAL

PRODUCT CATALOG

Our line of custom formulations is proven in both quality and efficacy. We have worked with some of the top doctors to put together these formulations to best serve both practitioners and patients. We believe in solving problems at the source, rather than only treating symptoms. Each supplement is pure, using the minimum amount of binders and other additives; only enough to make the product convenient and easy to take for your patient. Our network members are kept up-to-date with the latest technology advancements and disease treatment protocols. You'll enjoy access to our training portal to equip you with the best practices for our successful wellness center business model. Using only the best bio-energy testing equipment to identify imbalances in your nervous system, our partners find the best results using our holistic approach to naturopathic medicine. Partner with us to get the latest advancements in functional medicine and find out how to make your practice more profitable.



BEST SELLERS

DNT 53

P.21



BLOOD SUPPORT

DNT 53 is a blood boosting product that is a rich source of complex biochemical constituents that help to boost the body's immune system and defenses against viruses, bacteria, fungus, and free radicals.

GI PRO

P.22



GI SUPPORT

GI PRO has the most robust and effective Probiotic Strains. Reduces Inflammation. These primary strains and unique blend are exactly what the body needs to rebuild the gastrointestinal tracks microbial ecosystem without introducing additional foreign bacteria. This formula can also help your body break down carbohydrates, fats, and proteins with digestive enzymes, allowing for proper absorption of nutrients.

H951x

P.23



IMMUNE SUPPORT

This complex compound and micronutrients and metabolites have been shown to have different biological properties, such as anti-viral, antibacterial, anti-inflammatory, anti-mutagenic and anti-carcinogenic activities. Also, may support hormone modulation.

INFORCEx

P.23



URINARY TRACT HEALTH

This product helps to eliminate inflammation in the urinary tract along with the prostate. The minerals and fatty acids in this blend are used to help nourish cell membranes and maintain a healthy hormonal balance.

SB PRO

P.26



SUGAR BALANCE

SB PRO is a unique formulation designed to stimulate weight loss, balance metabolism and lower blood sugar by using a proprietary blend of antioxidants, amino acids, herbs, vitamins and minerals. SB PRO uniquely provides support for proper cell function and optimal health by regulating the metabolism.

V MAX

P.15-16



ENERGY SUPPORT

V MAX® is an advanced Nitric Oxide support blend based on Nitrosigine®. This compound has proven to increase artery diameter as much as 30% in a single dose over a placebo, and as much as 5x more effective than AKG alone. AlphaGPC® has been proven to support brain health by increasing oxygenation to aid in concentration, and focus. V MAX blend of Vitamins, Trace Minerals, Botanicals, Coenzymes bound in a berry flavor designed to support wellness and recovery.



BRITE Aesthetics

Unveil Your
Radiance Naturally

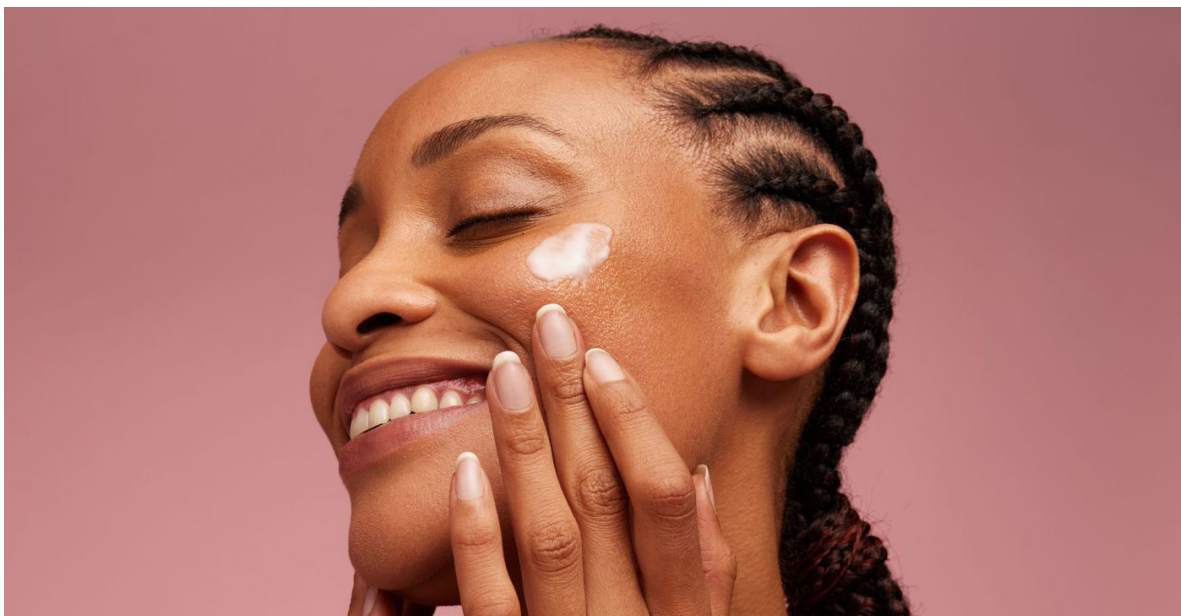
PRODUCT CATALOG

At Brite Aesthetics, we are proud to be a renowned natural skincare brand that places a premium on harnessing the power of natural and plant-based ingredients. Our commitment is simple yet profound: we are dedicated to delivering skincare solutions that are both effective and safe, all while steering clear of harsh chemicals, synthetic fragrances, and artificial colors.

Our product line is designed to cater to a diverse array of skin concerns, ensuring that your unique needs are met with the utmost care and attention. Discover a holistic approach to skincare with our meticulously crafted range, which includes cleansers, serums, masks, and more.

Every Brite Aesthetics product is the result of a thoughtful formulation process, blending the best nature has to offer. **We combine botanical extracts, vitamins, and antioxidants to ensure that your skin receives the pampering it deserves.**

When you choose Brite Skincare, you're embracing the power of nature and making a conscious choice for your skin's health and radiance. **Experience the beauty of natural ingredients and let your inner glow shine through with Brite Aesthetics.**





CAMU + SERUM

Smooth and healthy skin.
Promotes even skin tone.
Supports tissue repair.
Fights free radical damage.

Best Seller Camu + Serum

- High concentration of natural vitamin C : Camu + Serum contains a unique concentration of natural vitamin C derived from Camu Camu.
- Enhanced absorption and natural protection.
- Rebuilds collagen and elastin.
- Smooth and healthy skin.
- Promotes even skin tone.
- Supports tissue repair.
- Fights free radical damage



CAMU + SERUM

Content: **1 OZ**

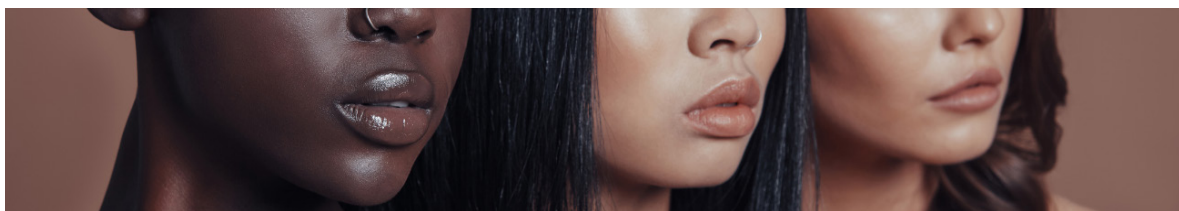
Type: **SERUM**

Suggested use: Camu + Serum provides a unique concentration of natural vitamin C found in Camu Camu, and is found to be 10,000 times more potent than traditional vitamin C. Its complex formula provides support to skin and soft tissue by improving absorption and natural protection. This silky application followed by a mild astringent feeling helps to rebuild collagen and elastin, leaving the skin feeling smooth and healthy. Daily application may result in a more even skin tone due to its unique ability to support tissue repair and free radical damage.

Benefits: Camu + Serum contains high vitamin c concentration, enhanced absorption and natural protection, rebuilds collagen and elastin, smooth and healthy skin, even skin tone, tissue repair and fights free radical damage.

Ingredients: Water, Myricaria Dubai Fruit (Camu Camu) Extract, Aloe Barbadensis Leaf Juice Glycerin Sangre de Drago (Croton Lechleri) Extract, Algae Extract, Niacinamide, Uncaria Tomentosa (Cat's Claw) Extract, Tocopherol, Hymenaea Coubaril (Jatoba) Extract, Stevia Rebaudiana Leaf Extract, Pfaffia Paniculata (Suma) Extract, Maytenus Illicifolia Leaf (Espinheira Santa) EXtract) Tetrahexyldecyl Ascorbate Panthenol, Ubiquinone (Coenzyme Q10), Chlorella Vulgaris Extract, Sodium Ascorbate, Sunflower Lecithin, Grapefruit Seed Extract, Glucose, Retinyl Palmitate, Lemongrass Oil, Lemon Oil, Acacia Senegal Gum, Sandalwood Oil, Citrus Water Fragrance, Caprylhydroxamic Acid, Cellulose Gum, Acid Polysaccharide, Caprylyl Glycol, Potassium Sorbate, Cocklebur.

Suggested dosage: For external use only, apply at night after washing your face. For better results use our REFINING CLEANSER





Vital Stem Cell Mask

Revive Your Skin's Natural
Potential with Plant Stem
Cells: Where Regeneration
Meets Innovation!



Vital Stem Cell Mask

- Our Vital Stem Cell Mask is precisely that. It's formulated with plant cell cultures, which have been rigorously studied and proven to work wonders in rejuvenating your skin. This fusion of botanical magic breathes new life into your skin cells, leaving you with a youthful, radiant complexion.



VITAL STEM CELL MASK

Content: **1.7 OZ** Type: **MASK**

Suggested use: Potent ingredients like Sodium Hyaluronate and Sea Holly Plant Stem Cells rejuvenate while Sodium Alginate and Caesalpinia Spinosa Gum invigorate. Vitamin-rich Cucumber Extract soothes as Tetrahexyldecyl Ascorbate and Lactic Acid renew, leaving skin balanced and radiant.

Benefits: Revives tired skin cells, helping them regain their vitality and youthful appearance, rejuvenate and refresh, leaving you with a natural radiance.

Ingredients: Purified Water, Witch Hazel, Sodium Hyaluronate, Potassium Azeloyl Diglycinate, Cucumber Extract, Sodium Alginate, Di-Panthenol, Polysorbate 80, Isopropyl Palmitate, Sea Holly Plant Stem Cells, Tetrahexyldecyl Ascorbate, Lacto Ceramide, PVP Polyvinylpyrrolidone, Vitamin E Acetate, Lactic Acid, Caesalpinia Spinosa Gum, Sodium Bicarbonate, Phenoxethanol, Cucumber Peel Extract, Cucumber Fragrance, Fulvic Acid, Cocklebur.

Suggested dosage: Apply thin layer to clean skin and massage into face and neck area. Allow to set for 15 to 20 minutes. Rinse with warm water and pat dry. Use Camu+ Serum. Apply regularly



Refining Cleanser

Discover the Beauty of
Nature's Harmony

REFINING CLEANSER

- Embark on a journey of skin transformation with Refining Cleanser. Let the harmonious blend of natural wonders embrace you, nurturing your skin's vitality like never before. Embrace nature's gift to achieve the skin you've always dreamed of.



REFINING CLEANSER

Content: **1.7 OZ** Type: **CLEANSER**

Suggested use: A fusion of nature's finest ingredients. Infused with Olive Squalene, our cleanser harmonizes nature's essences. Aloe, Witch Hazel Cucumber Extract Lactic Acid and Sodium Bicarbonate invigorate gently. Elevate your self-care with our called blend, nurturing and rejuvenating skin's vitality.

Benefits: Hydrates the skin, soothes irritation, may reduce signs of aging, Protects against oxidative damage, Soothes skin inflammation, Supports skin cell renewal

Ingredients: Purified Water, Glycerin (Kosher), Carbopol Ultrez 10, Witch Hazel, Aloe Vera Gel, Cucumber Extract, Phenoxyethanol, Lactic Acid, Polysorbate 80, Squalene Oil (from Olive), Decylglucoside, Cocamidopropyl Beta, Fragrance, Cocklebur, Sodium Bicarbonate, Xanthan Gum.

Suggested dosage: Squeeze a small amount into palms and rub together. Gently massage the face avoiding the eye area and rinse thoroughly. Can be used daily.



V MAX

THE ULTIMATE NITRIC OXIDE NUTRITION

Why is nitric oxide so important for the body? Nitric oxide plays a valuable role in nearly every one of our cells. When released by the endothelium of blood vessels, NO helps to relax the muscles lining your blood vessels, allowing them to widen. This vasodilation boosts the flow of blood, nutrients, and oxygen to every part of your body. It also helps to control blood pressure, reduce the effects of angina, and reduce the overall risk of heart disease. Nitric oxide can also help to reduce inflammation. It helps prevent platelets and white blood cells from adhering to the lining of blood vessels, which is crucial for reducing the buildup of plaque in the arteries. NO acts like a chemical messenger, relaying information



MADE IN USA



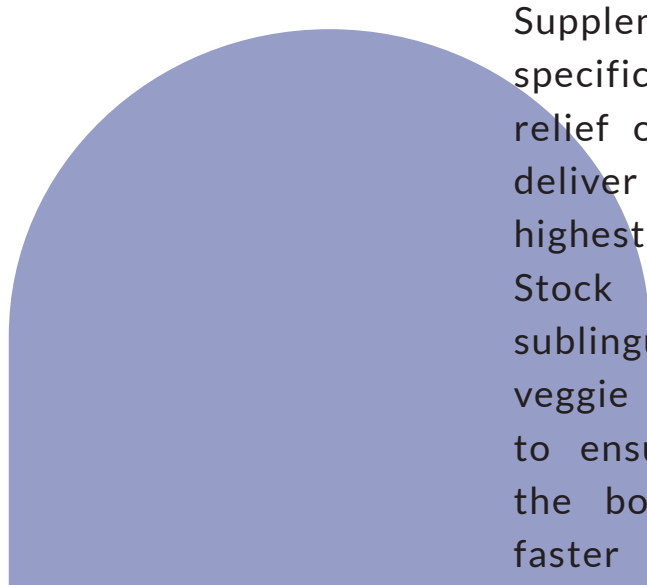


between the nerves and cells that control a range of bodily functions, from digestion to sexual function. This has led researchers to focus on nitric oxide as a potential agent for medical therapies.





STOCK BLENDS



Alive Innovations Stock Supplements are designed to aid in specific health issues and provide relief of symptoms. We strive to deliver the safest products with the highest quality ingredients. Our Stock Supplements consist of sublingual tablets and veggie capsules. This method is to ensure nutrient delivery into the body and possibly promote faster intake of supplements.



ARWYPRO

Content: **90 cap** Type: **Respiratory System**

Suggested use: Cardiovascular, relief from cough, asthma or other respiratory system discomforts.

Benefits: ARWY PRO is a powerful herbal formulation that supports throat and respiratory system disorders. With these powerful antioxidants and ingredients, ARWY PRO helps to suppress proinflammatory cytokine. May provide relief from cough, asthma, bronchitis, and laryngitis. Natural expectorant and helps to relieve inflammation.

Ingredients: Curcuma Longa, Pistacia chinensis Burgo, Pistacia chinensis Burgo, Cinnamomum zeylanicum, Taxus baccata, Piper longum, Temtinalia belerica Roxb. Temtinalia belerica Roxb. Glycyrrhiza glabra, Piper longu, Adhatoa Visca Nees

Suggested dosage: As a dietary supplement, adults take 2 capsules 3 times daily or as directed by healthcare professional



BCOMPLEX

Content: **60 tab** Type: **General Health**

Suggested use: Brain health, energy, cell function, digestion.

Benefits: B Complex is a combination of B vitamins that are essential nutrients to the body. With this convenient combination, B Complex may help support metabolism, proper cell function and energy.

Ingredients: Vitamin B12 Methylcobalmin, B1, B2, B3, Biotin, Folate

Suggested dosage: 1 rapid dissolve tablet daily or as directed by healthcare professional.



B12 1000

Content: **60 tab** Type: **General Health**

Suggested use: Brain Health

Benefits: 1,000 MCG of vitamin B12. This nutrient is highly involved in metabolism and blood and nerve cells. Our vitamin B12 is very easily absorbed in a sublingual method. B12 also helps the body convert fats and proteins into energy.

Ingredients: Vitamin B12 Methylcobalmin 1000 mcg

Suggested dosage: 1 rapid dissolve tablet daily or as directed by healthcare professional.



B12FOLATE

Content: **60 tab** Type: **General Health**

Suggested use: Brain Health, healthy DNA, brain function, metabolism, liver and nerve function.

Benefits: The natural occurring form of Folate (Vitamin B9) and Vitamin B12 Methylcobalamin are combined in the product to deliver two forms of B vitamins. This combination may help support low RBC's, metabolism and more.

Ingredients: Vitamin B12 Methylcobalamin 1,000 mcg, B6 2 mg, Methylfolate 1,667 mcg DFE

Suggested dosage: 1 rapid dissolve tablet daily or as directed by healthcare professional



BIOTIN

Content: **100 tab** Type: **Hair & Nails**

Suggested use: Hair, nails, metabolism.

Benefits: 5,000 MCG of Biotin is a core nutrient used in many processes in the body. Biotin is shown to support hair, skin, nails and metabolism.

Ingredients: Biotin 5,000 mcg/100 ct

Suggested dosage: 1 rapid dissolve tablet daily or as directed by healthcare professional



BRN PRO

Content: **1 oz** Type: **Neurological Health**

Suggested use: BRN PRO - 1 oz sinus spray - is an Advanced Micro Blend of nutrients designed to support the neuroimmune system delivered via sinus cavity.

Benefits: Protects brain cells, Improves cognitive function, Reduces the effects of aging, Supports healthy mood.

Ingredients: Proprietary Blend of Herbal, Glandular & Nutrient essences: 5-HTP, Acetyl Cysteine, Amonium Carbonate, Arginine, Aspartic Acid, BDNF, Cherry plum, Choline Chloride, Clematis, Curcumin, Cysteine, DHEA, Gingko, Glutamic acid, Glycine, Histidine, Impatiens, Isoleucine, Leucine, Lipoic Acid, Luffa fruit, Lysine, Malic Acid, Melanin, Melatonin, Methionine, NAD, Onion, Phenylalanine, Rock Rose, Star of Bethlehem, Taurine, Tryptophan, Tyrosine. Sus &/or Bovine essences of: Adrenal, Collagen, Connective tissue, Lung, Lymph node, Mucosa, Peyer's Patches, Thymus.

Suggested dosage: 1 spray up each nostril. Use 2-3 times daily as needed.



BODYDX

Content: **120 cap** Type: **Detox**

Suggested use: Detox, Heavy Metal Detox, Support Drainage Pathways, Environmental Detox Support, Arterial Health Support

Benefits: BODY DX™ is designed to support detoxification of environmental chemicals, heavy metals such as mercury and lead as well as unwanted mineral deposit sin arteries and throughout the body. BODY DX supports removal of other environmental toxins through drainage pathways and may support removal of excess cholesterol build up.

Ingredients: Molybdenum 100mcg, Zinc 2mg, Selenium 100mcg, Proprietary Herbal Blend 1280mg, Calcium Disodium (EDTA), Dietary sulfur (MSM), Dandelion, Camu camu, Kelp, Milk thistle, Alpha Lipoic Acid (ALA), Chlorella, Shilajit, Cilantro, Nicotinamide adenine (NAD), N-Acetyl L Cysteine, Citrus Pectin, Stinging nettle, Fulvic acid, Uva ursi, Garlic, Parsley

Suggested dosage: As a dietary supplement, take 2 capsules two to threetimes daily between meals with water. For optimal drainage and support take V MAX and HydroMin or MultiVite while using this product.



CARCTOL

Content: **120 cap** Type: **Alkalinity support**

Suggested use: Immune Support, alkalinity support

Benefits: This advanced herbal blend aids in the production of Natural Killer Cells (NKC) and macrophage activity of the immune system. Carctol is used to help support the body during illness. These herbs work synergistically by supporting cardiovascular health, elimination of excess acids in the body, cholesterol reduction and hormones.

Ingredients: Blepharis Edulis, Piper Cubeba, Smilax China, Hemidesmus Indicus, Tribulus Terrestris, Ammannia Baccifera, Lepidium Sativum, Rheum Emodi.

Suggested dosage: 1 capsule every 4 hours if taken as a dietary supplement or as directed by a healthcare professional.



COLLEZ

Content: **90 cap** Type: **Microbiome Health**

Suggested use: Peristalsis function and microbiome health

Benefits: COLLEZ™ is an advanced colon detox formula that supports proper peristalsis function and microbiome health. Taking 1-3 COLLEZ daily depending on need will support regular elimination and detoxification. COLLEZ antioxidant and formula may also support the immune system and ability to fight free radical damage and support.

Ingredients: Proprietary Herbal & Amino Blend: Psyllium husk, Guar gum, Cascara sagrada, Senna leaf, Celery, Cinnamon, Ginger, Prune, Raspberry leaf, Alfalfa, Aloe vera, Black Walnut hull, Buchu, Barberry root, Citrus pectin, Dandelion, Echinacea, Licorice root, Marshmallow root, Montmorillonite, Uva ursi, Yellow dock, Aloe ferox, Garlic, Cayenne, Superoxide dismutase, Rosemary leaf, Peppermint, L-cysteine)

Suggested dosage: 2 capsule daily or as directed by a healthcare professional.



COLLAGENX

Content: **12.7 oz** Type: **Body Composition**

Suggested use: Improve Body composition

Benefits: COLLAGENx is our robust anti-aging formula, containing collagen peptides, biotin, vitamin C and a full amino acid profile. Collagen is the most abundant substance in the body and helps give structure to our hair, skin, nails, bones, ligaments and tendons. When we get older, the production of collagen begins to slow down. Supplementing with collagen peptides (from hydrolyzed bovine collagen) may help with the body's need for these building blocks.

Ingredients: Biotin, Vitamin C (as ascorbic acid), Hyaluronic Acid (from sodium hyaluronate) Collagen Peptides, Leucine, Lysine, Methionine, Phenylalanine, Proline Serine, Threonine, Tyrosine, Valine, Alanine, Arginine, Aspartic Acid, Glutamic Acid Glycine, Histidine, Hydroxylysine, Hydroxyproline, Isoleucine.

Suggested dosage: Mix one scoop with 8 to 10 ounces of water or your favorite beverage. This is a tasteless supplement.



CHROMIUM

Content: **60 tab** Type: **Energy**

Suggested use: Supports insulin sensitivity and enhances protein, carbohydrate, and lipid metabolism.

Benefits: Chromium aids the action of insulin in the body. This trace mineral is called for when the body needs improvement in insulin sensitivity, enhanced lipid, protein and carbohydrate metabolism.

Ingredients: Chromium - 200mcg/100 ct

Suggested dosage: 3x daily if taken as a dietary supplement or as directed by a healthcare professional, Rapid Dissolve tablet



CT DEFENSE

Content: **60 tab** Type: **Inflammation**

Suggested use: Antioxidant, anti-inflammatory, assist the body's ability to eliminate the ENOX2 protein.

Benefits: Is a fantastic delayed release blend of concentrated green tea containing EGCG and other agents from chili peppers to help block the ENOX2 protein that is associated with abnormal cell growth. CT Defense may help with abnormal cell growth, aging-related disorders and reducing inflammation.

Ingredients: Proprietary Blend 420 mg blend of Green Tea Extract (Camellia sinensis O. Kize) (leaf) and Guajillo Chilies (Capsaicin annum) (whole dried chilies), Reshi, Turkey Tail and Chanterelle Mushrooms, Carob Powder (organic)

Suggested dosage: 1 Capsule Daily or as directed by a health care professional



D3

Content: **100 tab** Type: **Hormone Health**

Suggested use: Hormone Health, bone health, immune health and the nervous system

Benefits: D3 is made in the skin when the skin is exposed to sunlight. Some individuals may experience a deficiency in this vitamin.

Ingredients: 5000 IU Cholecalciferol

Suggested dosage: 1-3 tablets per day, Rapid Dissolve tablet



DHEA

Content: **30 tab** Type: **Hormone Balance**

Suggested use: Supports hormone balance, depression, obesity, lupus, and adrenal insufficiency. May also improve skin, osteoporosis, vaginal atrophy, & may help ED.

Benefits: Emotional support, female and male support, hormone balance, mental focus, adrenal support, mental stability, skin health, bone support, brain function.

Ingredients: DHEA 25 mg

Suggested dosage: As a dietary supplement, adults take 1 tablet once daily.



DNT53

Content: **60 caps** Type: **Body Composition**

Suggested use: Supports management of Thrombocytopenia (Low Platelet counts) by supporting RBC, WBC and bone marrow.

Benefits: DNT 53 is a blood boosting product that is a rich source of complex biochemical constituents that help to boost the body's immune system and defenses against viruses, bacteria, fungus, and free radicals.

Ingredients: Tribulus Terrestris, Prosopis Spicigera, Tinospora Cordifolia, Carica Papaya.

Suggested dosage: 1 Capsule 2 times daily or as recommended by a healthcare professional.



ENHANCEx

Content: **60 caps** Type: **Sexual Health**

Suggested use: -Sexual health, General health

Benefits: ENHANCEx is a powerful herbal blend to support micro circulation and increased sensitivity while naturally supporting hormones. ENHANCEx supports mind and body, and can be used by both males and females.

Ingredients: Acacia Arabica, Eurycoma Longifolia, Anacyclus Pyrethrum, Piper Cubeba Linn, Turnera Diffusa, Maca, Chlorophytum borivilianum, Polygonatum Verticillatum, Pueraria Tuberosa, Koren Red Ginseng (Panax ginseng) Velvet Bean (Mucuna Pruriens), Red Reishi Mushroom, Fadogia agrestis Horny Goat Weed, Dactylorhiza Hatageria, Mondia whitei, Montanoatomentosa, Lion's Main, Suma, Mucuna Pruriens, Asparagus Racemosus, Cordyceps Powder, Crocus Sativus, Black Ginger, Pausinystalia Yohimbe Myristica fragrans (Nutmeg & Clove), Sceletium

Suggested dosage: 1 Capsule 2 times daily or as recommended by a healthcare professional.



GABA

Content: **100 tab** Type: **Stress Managment**

Suggested use: Mood, blood pressure, mental focus, anxiety.

Benefits: GABA is a naturally occurring amino acid that serves as a major neurotransmitter in our brains. Its main properties help to support and balance mood, blood pressure and sleep

Ingredients: 100mg GABA

Suggested dosage: 1 Rapid Dissolve tablet



GRAVx

Content: **100 cap** Type: **Antioxidant Support**

Suggested use: Detoxification, immune boosting, reduction in adnormal cell growth

Benefits: GravX is an advanced antioxidant concentration. This unique blend of Turmeric root extract, Cat's claw bark extract, Ginger root extract, Bitter Orange fruit extract, Peppermint among others support reduction in abnormal cell growth, detoxification and immune boosting. Research has demonstrated Graviola may induce Cytotoxicity in afflicted cells in part by unhiniting cellular respiration in the mitochondria; this supports the body's natural ability of apoptosis in unhealthy cell growth.

Ingredients: Graviola, Camu Camu, Bloodroot, Omega Complex (derived from Ahi-flower) Astragalus, Sangre de Drago, Kakadu, NANx (Complex Emulsifying Essential Oil: Coconut, Oregano, Cinnamon, Neem, Mint Cedar, Lemongrass, Glove, Citronella, Kelp, Chrysanthemum & Garlic extract.)

Suggested dosage: 2 capsules daily or as directed by a healthcare professional.



GI PRO

Content: **60 cap** Type: **GI Support**

Suggested use: GI Support

Benefits: GI PRO is a unique combination of the most robust and effective probiotic strains on the market. Our 4 Super Strains survive the tough 2.0 pH of your stomach and can endure up to 180-degree heat. Coupled with L-Glutamine an essential Amino Acid used for biosynthesis of proteins and a powerful herbal blend to enhance your immune system. These primary strains and unique blend are exactly what the body needs to rebuild the gastrointestinal tracts microbial ecosystem without introducing additional foreign bacteria.

Ingredients: Proprietary Shelf Stable Probiotic Blend 50 Billion CFU, Boulardii, Pediococcus Acidilactici (PA-5051), Bacillus Coagulans, Bacillus Subtilis MB40, BIOOTI-C™ Saccharomyces, Proprietary Herbal Support Blend, Cat's Claw 4:1, Ginger 4:1, Peppermint 4:1, Slippery Elm, L-Glutamine, Fructo-Oligosaccharides, Digestive Enzyme Blend, Amylase, Cellulase, Lipase, Protease

Suggested dosage: 1 Capsule with meals.



HYDROMIN

Content: **2 oz** Type: **Hydration**

Suggested use: Hydration

Benefits: Advanced Electrolyte Supplement. Over 80 Different Micronutrients. Promotes Healthy Cell Activity, Cell Hydration, Mineral Concentrate

Ingredients: Vitamins B1, B3, B5, B6, Vitamin B12 Methylcobalmin, C, Calcium, Sodium, Magnesium, Selenium, Taurine, Camu Camu, and Deep Sea Mineral Complex

Suggested dosage: 1-3 drops/day in liquid



H951x

Content: **100 cap** Type: **Immune System**

Suggested use: Anti-inflammatory

Benefits: This complex compound and micronutrients and metabolites have been shown to have different biological properties, such as anti-viral, antibacterial, anti-inflammatory, anti-mutagenic and anti-carcinogenic activities. Also, may support hormone modulation

Ingredients: Advanced Concentrate Blend of Fermented Soy and NanoX nutrients

Suggested dosage: 2 capsules Daily or otherwise directed by Health Provider (liquid caps for quick absorption)



IRON

Content: **90 tab** Type: **Blood Health**

Suggested use: Blood Health

Benefits: This is a 25mg of iron in sublingual form. This mineral is needed for the body to support growth and development. Iron aids in hemoglobin production, hormone support, myoglobin production.

Ingredients: IRON 25 mg 139% (as Ferrous Fumarate) Stevia Leaf Extract 2 mg

Suggested dosage: 1 Quick Dissolve Tablet Daily or as directed by a health care professional.



IMMUNx

Content: **90 tab** Type: **Immune System**

Suggested use: Immune system, antiparasitic, antibacterial, antiviral, essential oils.

Benefits: Advanced Essential Oil Blend of Botanicals Extracts and Essential Oils that boost the immune system. This blend has proven to have anti-parasitic, anti-bacterial, and anti-viral characteristics. Micronized, this unique blend is easy to absorb.

Ingredients: Proprietary Blend of Herbal, Botanical Extracts in NANx suspension (Essential Oils)Sangre de Grado, Camu Camu, Coconut, Oregano, Cinnamon, Neem, Mint, Cedar, Geranium, Lemongrass, Clove, Citronella, Processed kelp, Chrysanthemum, Garlic extract,Una de gato, Suma, Ashwagandha 1950 mg

Suggested dosage: 1 Capsule, Rapid Dissolve tablet



INFORCEx

Content: **90 cap** Type: **Urinary Tract Health**

Suggested use: Urinary tract health, prostate health, inflammation

Benefits: This product helps to eliminate inflammation in the urinary tract along with the prostate. The minerals and fatty acids in this blend are used to help nourish cell membranes and maintain a healthy hormonal balance.

Ingredients: Graviola, Camu Camu, Bloodroot, Omega Complex (derived from Ahi-flower) Astragalus, Sangre de Drago, Kakadu, NANx (Complex Emulsifying Essential Oil: Coconut, Oregano, Cinnamon, Neem, Mint Cedar, Lemongrass, Glove, Citronella, Kelp, Chrysanthemum and Garlic extract)

Suggested dosage: Take 3 capsules daily or as directed by a healthcare professional.



KPRO

Content: **30 tab** Type: **Blood Health**

Suggested use: Blood

Benefits: Supports Bone health, Cognitive health, Heart health by preventing mineralization in arterial walls

Active ingredients: Contains Vitamin K1, K2(4), K2(7) 1,050 mcg (as phytonadione/500 mcg, menaquinone-4/500 mcg, menaquinone-7/50 mcg)

Suggested dosage: 1x daily or as directed by a healthcare professional, Rapid Dissolve tablet



K2/D3

Content: **30 cap** Type: **Blood Health**

Suggested use: Blood

Benefits: Helps Bone Development, Increases Calcium Absorption, Protects The Blood Vessels From Calcification, Increases Heart Health.

Ingredients: Cholecalciferol 1,000 IU, Menaquinone-7 (MK-7) 10mcg

Suggested dosage: 1 Rapid Dissolve Tablet Daily or as Directed Oil: Coconut, Oregano, Cinnamon, Neem, Mint Cedar, Lemongrass, Glove, Citronella, Kelp, Chrysanthemum & Garlic extract.)

Suggested dosage: 2 capsules daily or as directed by a healthcare professional.



L THEANINE

Content: **100 tab** Type: **Antioxidant / Wellbeing**

Suggested use: Supports gut, blood pressure, stress relief, reduces inflammation, anti-oxidant

Benefits: L-THEANINE - This Quick Dissolve delivery system bypasses the gut and supports stress-relief/Anxiety, boosts focus, enhances immunity by reducing inflammation. May also support blood pressure and improved sleep. As a powerful anti-oxidant commonly used in excess ENOX2 therapy treatments to boost effectiveness.

Ingredients: L-Theanine 200 mg, Stevia Leaf Extract 2 mg

Suggested dosage: 1 Quick Dissolve Tablet Daily or as directed by a healthcare professional.



MULTIVITE

Content: **100 tab** Type: **General Health**

Suggested use: Metabolism

Benefits: Metabolism and energy support. All around health support.

Ingredients: Vitamin A 1,500 mcg, Vitamin C 60 mg, Vitamin D 10 mcg, Thiamin 1.5 mg, Riboflavin 1.7 mg, Niacin 20 mg, B6 2 mg, Folate 667 mcg, Biotin 300 mcg, Pantothenic Acid 10 mg

Suggested dosage: 1x daily or as directed by healthcare professional, Rapid Dissolve tablet



NANOL

Content: **2 OZ** Type: **Immune System**

Suggested use: This blend is made to assist the immune system topically and internally.

Benefits: 2 oz spray - is an advanced blend of essential oils, herbals and lipid compounds that penetrate the skin to support surrounding tissue. Used topically, do not apply to open wound. Aids in detoxification, immune support, antioxidant support and healing. Orally may support immune and regenerative process

Ingredients: Coconut, Oregano, Cinnamon, Neem, Mint, Cedar, Geranium, Lemon-grass, Clove and more

Suggested dosage: 5 sprays 3x daily or as directed by healthcare professional.



PH PRO

Content: **1 item** Type: **Alkalinity**

Suggested use: Put in water for 5 min use continually or as directed till desired alkalinity is achieved.

Benefits: pH Pro portable ionizer increases alkalinity in the water as high as 9.6. This alkaline rich hydrogen stick promotes a healthy pH balance in the body treating over 1000 bottles of water.

Ingredients: portable ionizer hydrogen stick

Suggested dosage: 1x daily



PHOSPRO

Content: **2.0 oz** Type: **General Health**

Suggested use: PHOS PRO™ is an Advanced Blend of nutrients designed to support proper phosphorus levels in the body which can aid in circulation and supports decalcification. This supplement should be added to water. The body needs phosphorus for growth, maintenance and repair of all tissues and cells.

Benefits: Designed to support proper phosphorus levels in the body.

Ingredients: Magnesium, Orthophosphoric acid, Inositol, Choline Bitartrate, Hydrangea Extract, Apple Cider Vinegar (organic).

Suggested dosage: Take 20 drops daily or as directed by your health care professional.



PRX OIL

Content: 10 ml Type: Pain Relief

Suggested use: Topical pain relief

Benefits: PRX Oil (Pain Relief Xtreme) - This proprietary essential oil blend is used topically as a roll-on product.

Ingredients: Ginger 5 gm, Sesame Oil 7.5 ml, Gaultheria Oil 2.5 ml, PEA (Organic Orange Citrus Derived), Eucalyptus 2 cl.

Suggested dosage: Apply topically as needed.



SANGREX

Content: 1 oz Type: Immune System

Suggested use: Antiviral, Skin, Immune system boost, wound healing.

Benefits: SANGREX is a proprietary concentrate of Sangre de drago. Known to be an immune booster and have antiviral and wound healing effects and may also protect against other infections. May be used topically to aid in wound healing or other skin issues such as rashes, bites, fungi or dermatitis

Ingredients: Sangre de Drago

Suggested dosage: 20 drops orally or topically as desire.



SBPRO

Content: 90 cap Type: Blood Sugar

Suggested use: Diabetes, Metabolic Syndrom, Weight Loss.

Benefits: Stimulates Metabolism Lowers Blood Sugar, Proprietary Blend Of Antioxidants And Amino Acids, Provides Support For Proper Cell Function

Ingredients: Vitamin C (ascorbic acid) Vitamin E (d-alpha tocopheryl succinate as 15 IU) Biotin Magnesium (as magnesium oxide) Zinc (as zinc picolinate) Manganese (as manganese amino acid chelate) Chromium (as chromium amino acid chelate) Choline (as bitartrate) Vanadium (as vanadyl sulfate) Alpha Lipoic Acid RosaEx™ (rosa roxburghii fruit extract) Verbasinol™ (rehmannia glutinosa extract). Proprietary Blend Gymnemma Leaf Extract, Guggul Extract, Fenugreek, Bitter Melon Extract, Cassia Bark Extract, King Trumpet Mushroom, Banaba Leaf Extract, Juniper Berry Extract, Bilberry Fruit Extract, Cayenne Extract, Poria Mushroom Extract, Licorice Root Extract, Yarrow Herb (aerial parts), Agrimony (aerial parts), Turmeric Root Extract, L-Taurine, Berberine, Astragalus, Ginseng

Suggested dosage: 2 Capsules



SELENIUM

Content: 60 tab Type: Brain Health

Suggested use: Improves metabolism, brain function, skin, nails, antioxidant

Benefits: Advanced Quick dissolve tablet, bypassing gut for quick utilization; proven antioxidant to boost metabolism, brain function, skin, nails and vital all organs and immune system.

Ingredients: Selenium 200 mg 364%(as Selenomethionine)

Suggested dosage: 1 Quick Dissolve Tablet Daily or as directed by a healthcare professional.



SLKPRO

Content: **90 cap** Type: **Spleen, liver and kidney**

Suggested use: SLK PRO™ is a unique blend of botanicals suspended in a concentrate emulsifier for quick absorption. These nutrients have a history of supporting the spleen, liver, and kidneys while boosting the body's ability to detox.

Benefits: With the renal system being so crucial to the body, it is important to assist proper function in these major organs.

Ingredients: Cat's claw, Jurubeba, Dandelion, Stinging nettle, European goldenrod, and more

Suggested dosage: 2 capsules daily or as directed by a healthcare professional.



SNSPRO

Content: **1 oz** Type: **Immune Health**

Suggested use: SNS PRO - sinus spray - is an Advanced Micro Blend of nutrients designed to support the sinus's, and improve the mucus membrane health.

Benefits: Supports sinus health, Improves Mucus Membrane Health, Fights Infections Naturally, Reduces Inflammation, Immune System Boost, Non-Invasive and Easy to Use

Ingredients: Proprietary Blend of Herbal, Glandular & Nutrient essences: Ammonium Carbonate, Anemone Pulsatilla, Arnica Montana, Barberry, Cherry plum, Choline Chloride, Clematis, Club Moss, Echinacea, Goldenseal, Horseradish, Impatiens, Lomatium Dissectum, Luffa fruit, Manganese, Myrrh resin, Onion, Pau D'Arco, Propolis, Rock Rose, Sabadilla off, Star of Bethlehem, St John's wort, Sus &/or Bovine essences of: Adrenal, Lung, Lymph node, Mucosa, Peyer's Patches, Spleen, Thymus, Oils of Cinnamon, Coriander, Neem, Oregano, Parsley, Scotch Pine

Suggested dosage: 1 spray up each nostril. Use 2-3 times daily as needed.



VITAMIN C

Content: **90 tab** Type: **Immune Health**

Suggested use: Immune building, and supports body system, development and repair.

Benefits: This Quick Dissolve delivery system bypasses the gut and improves levels of Vitamin C. Proven to support body systems, body structure, absorption of collagen, iron, as well as boosting immune system and healing.

Ingredients: Vitamin C 500mg, Sodium 23 mg, Stevia Leaf Extract 5mg

Suggested dosage: 1 Quick Dissolve Tablet Daily or as directed by a healthcare professional



VMAX

Content: **30 serv** Type: **Cardiovascular & Brain**

Suggested use: Blood, Heart

Benefits: V MAX® is a powerful blend of amino acids, vitamins, minerals, and whole food extracts designed to promote the production of Nitric Oxide. Nitric Oxide plays a key role in the health of the cardiovascular system. This powder can also be used to help other supplements absorb better into the body. V Max may assist with energy, athletics, antioxidant protection, overall nutritional uptake, blood flow.

Ingredients: Vitamin C , Vitamin E, Vitamin D3, Vitamin K2, Biotin, Nitric Oxide Support Blend: Nitrosigine®, L-Citrulline, Lecithin Sunflower, Watermelon, Pomegranate Juice, Beet Powder Berry Blend: Grapeseed/Grape Skin Extract, Camu Camu, Blackberry Juice Powder, Raspberry Juice Powder, Botanical Endothelium Recovery: Hawthorn Berry, Horse Chestnut, Green Coffee Bean Extract, Indian Gooseberry, Saw Palmetto, Sodium Hyaluronate, Astrion® AlphaGPC® Deep Ocean Trace Mineral Blend Phosphatidylcholine Co-Ezyme Q10, Omega Complex (Ahiflower) , AstraGin®

Suggested dosage: Take 1 scoop daily prior to meals, in 8 oz. of water or as directed by a health care provider.



ZMAX

Content: **90 tab** Type: **Immune Support**

Suggested use: To support the heart, helps viral immune reactions and may reduce inflammation.

Benefits: Z Max - This Quick Dissolve delivery system bypasses the gut and improves levels of ZINC, Vitamin's C & D along with Elderberry, packed with antioxidants to boost immune system.

Ingredients: Vitamin C 30 mg, Zinc 5mg, Vitamin D 25 mg, Elderberry Extract 10:1 50mg, Stevia Leaf Extract 2 mg

Suggested dosage: 1 Quick Dissolve Tablet Daily or as directed by a health care professional.

Micro Blends

OVERVIEW

Alive Innovations Micro Blends are advanced mixtures of herbs, minerals, nutrients, and essences designed to support different functions of the body. Each Micro Blend is carefully constructed into a liquid for easy ingestion and digestion. **Suggested use on select Micro Blends are emotional support, detox cleansing or hormone balancing.** Micro Blends should be taken 30 minutes before or after food.



ALRGYPRO

Content: **1.7 oz** Type: **Allergies**

Suggested use: Allergies

Benefits: ALRGY PRO™ is an Advanced Micro Blend of nutrients designed to aid in relief of symptoms & emotions from general reactions, allergies or healing crises.*

Ingredients: Manganese, Choline chloride, Ammonium carbonate, Sea Salt; Luffa fruit, Sus glandular essences of Adrenal, Lung, Mucosa, Peyer's Patches, Thymus. flower essences of: Cherry-Plum, Clematis, Impatiens, Rock Rose, Onion (whole plant), Star-of-Bethlehem

MOXIE (energy frequency): Acetyl, Adrenaline, Apis, Arsenic album, Histamine, Inf y, IL-12, Luffa, Sabadila, Serotonin

Suggested dosage: 3 sprays 3x daily or as directed by healthcare professional.



BODYRGN

Content: **1.7 oz** Type: **Brain Health**

Suggested use: Brain and Adrenal Health

Benefits: Advanced Micro Blend. Supports The Energetic And Nutritive Foundation For Healthy Brain Activity. Reduce Emotional Scarring Due To Injury. Helps Build Strong Muscles And Tendons

Ingredients: Ankle Articulation, Articulation Capsule, Frontal Lobe, Hip Articulation, Hippocampus, Hypothalamus, Nerve, Sympathetic Trunk, Muscle, Solar Plex Nerve, Spinal Cord.

MOXIE (energy frequency): AIL-1, BDNF, Beta Endorphine, bFGF, Calcitonin, IGF, IL-10, TGF.

Suggested dosage: 3 sprays 3x daily or as directed by healthcare professional.



FMLPRO

Content: **1.7 oz** Type: **Hormonal Balance**

Suggested use: Hormonal balance, energy boost, better sleep, lower mood swings.

Benefits: FML PRO™ is an Advanced Micro Blend of nutrients designed as a female balancing adaptogenic formula supporting both glandular and hormonal components.

Ingredients: Adrenal, Cholesterol, Corpus luteum, Hypothalamus, Melatonin, Ovary, Pancreas, Pineal, Pituitary, Thalamus, Thymus, Thyroid.

MOXIE (energy frequency): Cholesterol, estrogen, melatonin, progesterone.

Suggested dosage: 3 sprays 3x daily or as directed by healthcare professional.



FNGSDX

Content: **1.7 oz** Type: **Fungal Detox**

Suggested use: Detox support

Benefits: DFNGS DX is an Advanced Micro Blend of Berberis, Cochlearis armor, Echinacea, Hydrastis, Lapacho and more designed to aid in relief and detox of symptoms or exposure to mold or fungus.

Ingredients: Iron, Zinc, Selenium, Whole plants of Anemone Pulsatilla, Barberry, Club Moss Parsley, Echinacea, Goldenseal, Pau D'Arco; Horseradish root, Lomatium, Myrrh resin, Propolis, trace Iridium, Thymus (Sus &/or Bovine).

MOXIE (energy frequency): cochlearia armor, Lycopodium, Phosphoric acid.

Suggested dosage: 3 sprays 3x daily or as directed by healthcare professional.



GIDx

Content: **1.7 oz** Type: **Gut Health**

Suggested use: Better digestion, less bloat, healthy gut.

Benefits: GI DX™ is an Advanced Micro Blend of nutrients designed to support a healthy GI tract/bowel function and elimination, constipation & leaky gut, TH1-TH2 balancing Payers, Patches repair.

Ingredients: Pantothenic Acid, Potassium (carbonate), Sodium (carbonate), Vitamins B1, Vitamin D, Aloe (whole plant), Bryonia (root), Cascara (whole plant), Chelidonium Majus (whole plant), Dandelion (whole plant), Milk Thistle (seed), Rhubarb (rhizome), Stone root (rhizome & roots), Niacin, ; Sus scrofa essences of: colon, Peyer's patches & rectum

MOXIE (energy frequency): Alumina, il-12, inf-y, Scatolum, Serotonin.

Suggested dosage: 3 sprays 3x daily or as directed by healthcare professional.



IMMUpro

Content: **1.7 oz** Type: **Immune System**

Suggested use : Supports immune system, regeneration as well as modulation and balance of immune function. Natural Immune boost.

Benefits: IMMU PRO™ is an Advanced Micro Blend of nutrients designed to support regeneration and immune modulator re-population. Improves immune response naturally.

Ingredients: Ascorbic Acid essence, Adrenal, Bone Marrow, Lymph Node, Peyer's Patches, Spleen, Thymus, Bovine &/or Sus

MOXIE (energy frequency): GCSF, IL-2, Inf-y

Suggested dosage: 3 sprays 3x daily or as directed by healthcare professional.



INF B DX

Content: **1.7 oz** Type: **Bacterial Detox**

Suggested use: Immune Support

Benefits: INF B DX is an Advanced Micro Blend of Arnica, Belladonna, Colloidal Iridium, Ferrum Metallicum and more. Designed to support and enhance the body's immune system response under bacterial conditions. This micro blend offers a detox of bacterial influences in the body.

Ingredients: Adrenal (Sus Scrofa &/or Bovine), Arnica (whole plant), Echinacea (whole Plant), Golden Seal (Whole Plant), Horse Radish (Root), Iridium Colloidal, Iron Colloidal, Lomaum Dissectum (Whole Plant), LymphNode (Sus Scrofa &/or Bovine), Phosphorus Colloidal, Spleen (Sus Scrofa &/or Bovine), St. Johns Wort (Whole Plant), Tecoma (Whole Plant), Thymus (Sus Scrofa &/or Bovine), Zinc Colloidal.

MOXIE (energy frequency): Belladonna, Cochleria, Tecoma

Suggested dosage: 3 sprays 3x daily or as directed by healthcare professional.



INFLDX

Content: **1.7 oz** Type: **Inflammation**

Suggested use: Support Bone and joints

Benefits: INFL DX™ is an Advanced Micro Blend of nutrients and organ tissue essences that may support the bodies inflammatory response. Key Ingredients: Bryonia (root), Monkshood (whole plant), Citric acid, sus scrofa essences of: Adrenal, Connective tissues, Pineal, and Solar Plex. INFL DX may be used to relieve muscle and joint pain, but also excess inflammation throughout the body.

Ingredients: Sodium (pyruvate), Bryonia (root), Monkshood (whole plant), Citric acid, sus scrofa essences of: Adrenal, Connective tissues, Pineal, Pituitary, Solar Plex.

MOXIE (energy frequency): Aconite, AIL-1, apis/bee, Belladonna, Beta Endorphine, Bryonia, Citric Acid, IL-10, TGF

Suggested dosage: 3 sprays 3x daily or as directed by healthcare professional.



INF V DX

Content: **1.7 oz** Type: **Viral Detox**

Suggested use: Immune Support

Benefits: INF V DX™ is an Advanced Micro Blend of nutrients designed to support and enhance the body's immune system response under viral conditions. This Micro blend offers a detox of viral influences in the body.

Ingredients: Phosphorus, Selenium, Zinc, Iodine, Echinacea (whole plant), Boneset (aerial flowering parts), Gelsemium (whole plant), Goldenseal (whole plant), Clubmoss (whole plant), Watercress (whole plant), Phosphoric acid, Thymus (suis).

MOXIE (energy frequency): Phosphoric acid, Belladonna, Lachesis, Nux vomica, Pyrogenium.

Suggested dosage: 3 sprays 3x daily or as directed by healthcare professional.



KDNVPRO

Content: **1.7 oz** Type: **Kidney Support**

Suggested use: Kidney Support

Benefits: Supports kidney and bladder and urinary tract drainage, detox, inflammation, general nutrition and water retention, vital energy for organ along with support for GI and reduction of urea/creatinine load. May also support Arrhythmia, edema due to weak heart, palpitations along other heart-related issues.

Active Ingredients: Angelica, Astragalus, Curcumin, Lespedeza, Rheun (7.5 ml), Nigella, Salvia met (5 ml), Red Suma (2.5 ml).

Suggested dosage: 3 sprays 3x daily or as directed by healthcare professional.



LVRPRO

Content: **1.7 oz** Type: **Liver Support**

Suggested use: Healthier skin and hair, Hormonal balancing, Decreased sinus and allergy issues, slowed aging, potentially fewer aches and pains

Benefits: LVR PRO™ is an Advanced Micro Blend of nutrients designed to support Liver health, drainage and detox cleansing and regeneration.

Ingredients: Carduus Benedictus, Carduus Marianus, Chelidonium, Choline, Duodenum, Fummaric Ac., Gall Bladder, Inositol, Lycopodium, Natrium Oxa., Natrium pyr., Niacin, Taraxicum, Vein, B1, B2, B6, Vitamin B12 Methycobalmin (30K), Ceanothus Am., Chionanthus vir. (6X), Coeliac Plexus, Pancrease (8X, 200K), IL 4 (10X, 200K), Kalium sulf, Natrium sulph. (6X, 30K), Liver, Spleen (6X, 200K).

MOXIE (energy frequency): Fumaric acid, IL-4, Sodium oxalate, Potassium sulfate,

Suggested dosage: 3 sprays 3x daily or as directed by healthcare professional.



LYMPHDX

Content: **1.7 oz** Type: **Lymphatic Support**

Suggested use: Lymphatic support, drainage, detox.

Benefits: LYMPH DX™ is an Advanced Micro Blend of nutrients designed to support a healthy lymphatic system. This blend will encourage drainage and detox while supporting healthy lymphatic tissue.

Ingredients: Whole plants of Fumaria Off, Scotch Pine, Black Pepper & Tilia Tomentosa; Potassium Carbonate, Blackthorn buds, essence of sus scrofa Lymph Node & Spleen; Silicea essence.

MOXIE (energy frequency): Ethyl alcohol, Hepar sulph calc, Sulfuric acid.

Suggested dosage: 3 sprays 3x daily or as directed by healthcare professional.

METABOLISM

THE TRUTH ABOUT METABOLISM

There are a lot of myths related to the impact metabolism has on your health, especially in terms of weight loss. In simple terms, metabolism is the internal process by which your body expends energy and burns calories. It runs 24/7 to keep your body moving, even when you're resting or sleeping, by converting the food and nutrients you consume into the energy your body needs in order to breathe, circulate blood, grow and repair cells, and everything else it does to survive.

META PRO is an innovative blend of plants, minerals, and key nutrients to support and enhance metabolic function and lipid metabolism. This exclusive formula has harnessed the benefits of natural ingredients shown to support energy production, thermogenesis, and overall homeostasis.



MADE IN USA





REVOLUTIONARY FORMULA

META PRO has been shown to provide the following benefits

- Enhances metabolic function
- Improves glucose metabolism
- Stimulates lipid metabolism
- Supports energy production





METAPRO

Content: **1.7 oz** Type: **Metabolism**

Suggested use: Metabolism, energy

Benefits: META PRO™ is an Advanced Micro Blend of nutrients designed to support metabolism, energy production, healthy homeostasis, thermal regulation and nutrient storage.

Ingredients: Artery (sus scrofa), ATP (adenosine triphosphate), Centella Asiatica (whole plant), Citric Acid, Colchicum Autumnale (bulb), Iron (Fumarate), Fumaric Acid, IGF, Potassium (aspartate), L-Carnatine, Lactic Acid, Lipase, Liver (sus scrofa), Lymph node (sus scrofa), Sodium (oxalate & pyruvate) Pituitary (sus scrofa), Succinic Acid, Thyroid (sus scrofa), Vein (sus scrofa), Yohimbe bark extract.

MOXIE (energy frequency): cAMP, Colchicum, Igf, il-10, insulin, Mamordica, Quinhydrone, Thyrodium

Suggested dosage: 3 sprays 3x daily or as directed by healthcare professional.



MITOPRO

Content: **1.7 oz** Type: **Cellular Health**

Suggested use: Mitochondrial function such as cell growth, movement, and homeostasis

Benefits: MITO PRO™ is an Advanced Micro Blend of nutrients that may stimulate and support oxidative phosphorylation. Mitochondria generate the majority of adenosine triphosphate (ATP), the energy currency of the cell. This supplement can be used to support the oxidation (aging process) and positively affect the energy of the cells.

Ingredients: Calcium chloride, Copper (sulfate), Iron (citrate), Magnesium phosphate, Manganese phosphate, Sodium (oxalate, pyruvate), Niacinamide, Potassium oxalate, Selenium, B Complex (B1, B2, B6), Zinc Alpha lipoic acid, Citric acid, Colchicum autumnale, Conium maculatum, Fumaric acid, Lactic acid, Podophyllum, RNA, Succinic acid, Sulfur

MOXIE (energy frequency): cAMP, Colchicum, merc sol, Methyglyoxal, Quinhydrone.

Suggested dosage: 3 sprays 3x daily or as directed by healthcare professional.



MLPRO

Content: **1.7 oz** Type: **Hormonal Balance**

Suggested use: Improves sexual development and reproductive function, energy boost, better sleep.

Benefits: ML PRO is a unique adaptogenic blend of nutrients, glandular and hormone components that are designed to support balancing male hormones, organs, and glands, aiding peak male performance.

Ingredients: Adrenal gland, cAMP, Cholesterol, DHEA, Pancreas, Pineal, Pituitary, Prostate, Testis, Testosterone, Thalamus (6X, 200K), Aldosterone, Androsterone (15X, 200K), Growth hormone, Melatonin, (4C, 200K), Hypothalamus (8X, 200K), Thy-mus (6C, 200K), Thyroid gland (200K).

MOXIE (energy frequency): Aldosterone, Androsterone, Growth hormone, Testosterone

Suggested dosage: 3 sprays 3x daily or as directed by healthcare professional.



NEUROPRO

Content: **1.7 oz** Type: **Neurological**

Suggested use: Neuro support for Neuro Pathways and brain function

Benefits: NEURO PRO is a blend of nutrients designed as Autonomic (Full spectrum) neurotransmitter support and adaptogenic action that provides core regenerative nutrient support for neuro pathways.

Ingredients: 5-HTP, Choline (as Choline Chloride), Glutamic acid, Glycine, Histidine, L-Dopa, Melanin, Melatonin, Norepinephrine, Octopamine, Phenylalanine, Taurine, Tryptophan, Tyrosine.

MOXIE (energy frequency): Acetylcholinesterase, acc, Dopa, l-dopa, Malvin, Nitric oxide, Norepinephrine, o-methyl, Octopamine, Serotonon,

Suggested dosage: 3 sprays 3x daily or as directed by healthcare professional.



NRVS PRO

Content: **1.7 oz** Type: **Nervous System**

Suggested use: Boost immune system, brain health and function, better digestion, improve circulation.

Benefits: NRVS PRO™ is an Advanced Micro Blend of nutrients designed to support balancing of the Central Nervous System & Autonomic Nervous System along with Adrenal, Ig, Neurological and Mental clarity supporting both glandular and neurological systems.

Ingredients: Choline chloride, Adrenaline, GABA, Histamine, Norepinephrine, Tyramine (6X, 200K), Hydrastis (3X), Taraxacum (3X, 30K),

MOXIE (energy frequency): Adrenaline, Acc, Histamine, Norepinephrine

Suggested dosage: 3 sprays 3x daily or as directed by healthcare professional.



PARADx

Content: **1.7 oz** Type: **Parasite Detox**

Suggested use: Parasites

Benefits: PARA DX™ is an Advanced Micro Blend of nutrients designed to support elimination of parasitic issues. This may assist in proper nutrient absorption.

Ingredients: Black walnut hull, oregano extract, wormwood powder, neem leaf powder, thyme leaf, clove, pumpkin seed, garlic, fennel seed, pancreatin, L-lysine, ox bile, pepsin, cellulase, bromaline

MOXIE (energy frequency): NONE

Suggested dosage: 3 sprays 3x daily or as directed by healthcare professional.



RENALPRO

Content: **1.7 oz** Type: **Renal Health**

Suggested use: Designed to support increase in circulation, reduce inflammation, improve immune response to bacteria, fungus and viral loads.

Benefits: RENAL PRO is an Advanced Micro Blend of nutrients designed to support increase in circulation, reduce inflammation, improve immune response to bacteria, fungus and viral loads while supporting the body's natural elimination process. May also support mental function, heart, liver, bladder, pancreas and GI system and general homeostasis and repair.

Ingredients: Angelica Archangelica L. (Root and Rhizome), Astragalus Membranaceus (Whole Plant), Cinnamomum Verum (Whole Plant), Curcumin (Rhizome), Lespedeza Capitata (Whole Plant), Nigella Sativa (Whole Plant), Orthosiphon Aristatus (Whole Plant), Rhus Glabra (Whole Plant), Rheum Officinale (Whole Plant), Salvia Officinale (Whole Plant).

Suggested dosage: 3 sprays 3x daily or as directed by healthcare professional.



RLFPRO

Content: **1.7 oz** Type: **Emotional Support**

Suggested use: RLF PRO™ is an Advanced Micro Blend of nutrients designed to aid in relief of symptoms & emotions from general reactions, allergies or healing crises.

Benefits: Emotional support, energy boost, calmness, improves focus.

Ingredients: Choline (as Choline Chloride), Cherry plum (Flower and stem), Clematis (Flower and stem), Impatiens (Flower and stem), Rockrose (Flower and stem) & Star-of-Bethlehem (Whole plant).

MOXIE (energy frequency): Histamine, Serotonin, il-12, Inf-y

Suggested dosage: 3 sprays 3x daily or as directed by healthcare professional.



SLPEZ

Content: **1.7 oz** Type: **Sleep support**

Suggested use: SLP EZ is an Advanced Micro Blend of nutrients designed to support deep restful sleep cycle and natural mental calm and balance.

Benefits: Support deep restful sleep cycle, natural mental calm and balance.

Ingredients: Chamomile (Whole Plant), Christmas Rose (Root), Lemon Balm (Whole Plant), Melatonin, Oat (Whole Plant), Phosphorus Colloidal, Pineal Gland (Sus Scrofa &/or Bovine), Pulsatilla (Whole Plant), Serotonin, Valeriana Officinale (Whole Plant).

MOXIE (energy frequency): Serotonin.

Suggested dosage: 3 sprays 3x daily or as directed by healthcare professional.



SKNPRO

Content: 1.7 oz Type: Skin repair

Suggested use: Designed to support the skin and tissue repair. May provide relief to skin challenges.

Benefits: SKN PRO is an Advanced Micro Blend of nutrients designed to support skin and tissue repair. May provide temporary relief to skin challenges. May be applied topically to affected area for additionally relief or repair.

Ingredients: Calcium (calcium Gluconate), Centella Asiatica (Whole Plant), Collagen (Sus scrofa), Skin (Sus scrofa &/or Bovine), Placenta (Sus Scrofa &/or Bovine), Hyaluronidase.

MOXIE (energy frequency): bFGF, Hyaluronidase, IGF,

Suggested dosage: 3 sprays 3x daily or as directed by healthcare professional.



SYS DX

Content: 1.7 oz Type: Detoxification

Suggested use: Detoxification, Hormone Balance

Benefits: SYS DX is an Advanced Micro Blend of herbals, glandular components, minerals, and vitamins designed to support detox and drainage of all major body systems and pathways.

Ingredients: Alpha Ketoglutaric Acid, Alpha Lipoic Acid, Ascorbic Acid, Berberis vulgaris (whole plant), Blessed Thistle (flowering tops), Club Moss, meadow saffron (bulb), Dandelion (whole plant), Milk Thistle (seed), Activated Charcoal, Gallium (asparine); with sus scrofa essences of Adrenal, Kidney, Liver, Lymph node, Connective tissue, Thymus, Thyroid & Tonsil.

MOXIE (energy frequency): Colchicum, II-4, Nux vomica,

Suggested dosage: 3 sprays 3x daily or as directed by healthcare professional.



SYS PRO

Content: 1.7 oz Type: System Support

Suggested use: General Support, Cellular Detoxification, Mitochondrial support

Benefits: SYS PRO is an Advanced Micro Blend of herbals, glandular components, minerals, and vitamins designed to support connective tissue, peripheral nerves, circulatory and fat drainage, and detoxification pathways.

Ingredients: Ascorbic Acid (vitamin C), DHEA, Histidine, Malic Acid, NAD, & Tyrosine, Sea kelp, Thuja Occidentalis, Phenylalanine, Adrenal, Lymph node & connective tissue suis glandulars.

MOXIE (energy frequency): Bdnf, bFGF, Hyaluronidase, il-6, Lactic acid, Prolactine, Pyrogenium, Trichinoyl, Sodium oxalate/pyruvate/sulfate

Suggested dosage: 3 sprays 3x daily or as directed by healthcare professional.



THYROPRO

Content: 1.7 oz Type: Thyroid Health

Suggested use: Thyroid, Metabolism

Benefits: THYRO PRO is an Advanced Micro Blend of herbals, glandular components, minerals, and vitamins designed to support thyroid rebalancing & regeneration with additional drainage and detox support.

Ingredients: Trace Iodine, Adrenal gland, Parathyroid, Pituitary, Spleen, Thymus, Thyroid (all sus scrofa &/or bovine), Kelp(whole), trace Iridium (colloidal)

MOXIE (energy frequency): Thyroxine (T4), Triiodothyronine (T3).

Suggested dosage: 3 sprays 3x daily or as directed by healthcare professional.



CUSTOM
COMPLETE

FORMULA BASES

Our Custom Complete Builder is fully equipped with proprietary blends that act as ***formula bases*** for your customized supplement. These blends are formulated for specific problem areas and offers support for many body systems. Suggested use and dosage are different for each formulation.

ADRENAL SUPPORT

Benefits: The Adrenal Glands control regulation of most hormones. This formulation supports the endocrine system and helps to regulate metabolism. This complex of vitamins and herbs may help to alleviate signs of Adrenal Fatigue.

System supported: Endocrine, Metabolism

Active ingredients: Vitamin C (from Camu Camu Berry) 20mg, Pantothenic Acid (as Calcium Pantothenate) 50mg, Adrenal (of bovine source, not an extract) 250mg, Licorice (root) 50mg, Ginger (rhizome) 25mg, Kelp (entire plant) 25mg

Suggested dosage: 1-3 x daily

Similar to: Adrena Plus

BETA MAX

Benefits: This formulation helps to support the liver, gallbladder, and pancreas. Calcium and Phosphorus are used to help regulate multiple hepatic functions such as lipid and carbohydrate metabolism and proper liver functions.

System supported: Liver, Gallbladder, Pancreas

Active ingredients: Calcium (as dicalcium phosphate) 220 mg, Niacin (as niacinamide) 10mg, Phosphorus (as dicalcium phosphate) 164 mg, Choline Bitartrate 1664 mg, Inositol 160 mg, Betaine HCl 76 mg, Lecithin (soy) 76mg, Artichoke 50 mg, Dandelion (herb) 50 mg, Milk Thistle (seed) 50 mg, Turmeric (root) 50 mg, DL-Methionine 30 mg

Suggested dosage: 1-3 x daily

C BOOST

Benefits: This blend contains vitamin C and bioflavonoids. Bioflavonoids may enhance the action and absorption of vitamin C. This combination is used for its antioxidant and anti-inflammatory properties. Camu Camu is added to help the body fight against viral infections.

System supported: Immune system

Active ingredients: Vitamin C (as Ascorbic Acid) 80 mg, Citrus bioflavonoid Complex 1100 mg, Camu Camu Berry extract 500 mg

Suggested dosage: 1-3 x daily

Similar to: Alpha Flavin

ENDOCRINE SUPPORT

Benefits: This blend supports the endocrine system by combining pantothenic acid, manganese, and adrenal and pituitary sources. This combination helps your body to utilize vitamins, improve energy production and ensure proper liver function. Pantothenic acid supports the health and function of adrenal glands.

System Supported: Endocrine

Active Ingredients: Pantothenic Acid (as Ca Pantothenate) 4.5 mg, Zinc (as Amino Acid Chelate) 5.3 mg, Manganese (as Sulfate) 1.8 mg, Ovary & Adrenal Of a bovine source-not an extract, Goldenseal (leaf), Kelp (entire plant), Pituitary**, Hypothalamus**, Dulce, Yarrow Flower.

Suggested dosage: 1-3x daily

Similar to: Endo Glan Plus

HEART SUPPORT

Benefits: This blend was formed to support the heart function. By combining magnesium, l-carnitine and l-taurine, this blend encourages massive heart support by aiding in blood pressure, nervous system, heart failure, oxidative stress, and myocardial contractions.

System Supported: Heart

Active Ingredients: Magnesium (from Magnesium Amino Acid Chelate) 126mg, Heart (of bovine source, not an extract) and Inulin, (from Chicory); L-Carnitine 175mg,, L-Taurine 87mg, Coenzyme Q10 21mg

Suggested dosage: 1-3x daily

Similar to: Cardi Plus

HISTAMINE SUPPORT

Benefits: This blend is important for the immune system when compromised by environmental or intrinsic factors. By combining calcium, iron, and vitamin Vitamin B12 Methycobalmin, they each help to stabilize the mast cell membranes, reduce erythema caused by a histamine reaction and assists in the releasing of the histamine reactions to support this function.

System Supported: Immune, Histadine control

Active Ingredients: Calcium (as dicalcium phosphate) 38mg, Iron (as Ferrous Fumarate) 1.95mg, Vitamin B12 Methycobalmin (as cyanocobalamin) 10mcg, Phosphorus (as dicalcium phosphate) 29mg, Chromium (as polynicotinate) 1 mcg, Liver (of bovine source, not an extract) 80mg, Bovine liver fat extract 40 mg

Suggested dosage: 1-3x daily

Similar to: Hista Plus

IMMUNE-C

Benefits: This powerful formulation contains Graviola, vitamin C, Camu Camu berry, and Cats Claw. All these immune boosting ingredients are combined to offer great support to the immune system.

System Supported: Immune

Active Ingredients: Vitamin C (from Camu Camu) 8.4 mg, Soursop (leaf) (Graviola) 70 mg, Cats Claw (bark) 70 mg, Dragon's Blood Croton (sap) 70 mg, Astragalus (root) 70 mg, Camu Camu (berry) 70 mg

Suggested dosage: 1-3x daily

Similar to: Immu-C

KIDNEY AND BLADDER SUPPORT

Benefits: The ingredients in this blend are designed for Kidney and Bladder support. Benefits may include improved function in blood pressure and blood sugar; along with goldenrod to help flush kidney stones out and stop inflammatory diseases of the urinary tract.

System Supported: Kidneys, Bladder

Active Ingredients: Raw Kidney concentrate, Raw Liver Concentrate of a bovine source, not an extract, Uva-Ursi (leaf), Echinacea purpurea (root), Goldenrod (aerial parts) (Solidago), Disodium Phosphate, and Juniper (berry); Dicalcium phosphate

Suggested dosage: 1-3x daily

Similar to: Rena Plus

LIGAMENT SUPPORT

Benefits: This formula will help support muscles and connective tissue. By combining l-lysine, boron, and bromelain, this blend is ideal to help improve stiffness, inflammation, arthritis, joint support, and soreness.

System Supported: Muscles, Connective Tissues

Active Ingredients: Calcium (as Lactate, Dicalcium Phosphate) 4mg, Phosphorus (as Dicalcium Phosphate) 29mg, Magnesium (as Citrate) 2mg, Manganese (as Sulfate) 11mg, Citrus Bioflavonoids 50mg, Pancreatin (8X) 12mg, L-Lysine 5mg, Ox Bile 5mg, Spleen (Bovine)* 5mg, Thymus (Bovine)*5mg, Betaine HCl 2mg, Boron (as Amino Acid Chelate) 100mcg, Bromelain 600 GDU/mg 0.3mg

Suggested dosage: 1-3x daily

Similar to: Liga Plus

LIVER SUPPORT

Benefits: Liver support is for individuals experiencing symptoms of decreased liver functions. Vitamin A, Dandelion, and Choline Bitartrate, have been seen to reduce fatty necrosis of the liver, reduce stress on the liver, support production of bile, and improve epigenetic regulation of gene expression which are all crucial to liver development and function.

System Supported: Liver

Active Ingredients: Vitamin A (100% as Beta-Carotene) 1,000 IU, Liver (of a bovine source, not an extract) 350mg, Dandelion (root) 50mg, Oregon Grape (root) 50mg, Barberry (root) 50mg, Choline Bitartrate 10mg, Inositol 10mg, Betaine HCl 10mg, Disodium Phosphate, Calcium

Suggested dosage: 1-3x daily

Similar to: Hepachol

LUNG SUPPORT

Benefits: This formula is designed to support the lungs and immune system. When experiencing blockage or impairment in the lungs, this combination of vitamins and antioxidants are used to support Lungs, Lymph nodes and Thymus.

System Supported: Lungs, Immune

Active Ingredients: Vitamin A (as palmitate) 8,000 IU, Vitamin C (Ascorbic Acid) 16 mg, Vitamin B (as Calcium Pantothenate) 15 mg, Lung 75 mg, Adrenal 55 mg, Lymph30 mg of bovine source, not from an extract, Eucalyptus 30 mg, Thymus** 20 mg, Psyllium husk 1 mg

Suggested dosage: 1-3x daily

Similar to: Pneumo Plus

MAG7

Benefits: This potent formula is a concentrated blend of seven distinct forms of magnesium, each meticulously chosen for their unique benefits and unparalleled utilization by the body. MAG7® is ingeniously bound in potassium, a vital mineral that provides enhanced and balanced support for your cells, promoting overall cellular health.

System Supported: Autonomic Nervous System, Adrenal Glands, Muscles, Blood Sugar, Bone and DNA

Active Ingredients: Magnesium 500mg (from Magnesium Aspartate, Taurate, Orotate, Glycinate, Malate, Chelate, Citrate), Potassium 39 mg (from Potassium Aspartate Complex), Colostrum 40 mg

Suggested dosage: 2 capsules daily

Similar to: MG/K ASPARTATE

MOLD RX

Benefits: This formulation is used for detoxification of different molds. Oregano, Chaga, Sage and other ingredients are combined to produce a powerful antifungal, antibacterial and anti-inflammatory effect against mold influence.

System Supported: Detox - Mold

Active Ingredients: Wild oregano extract 200mg, Pau D'Arco (bark) 100 mg, Chaga Mushroom 75mg, Sage Leaf 50mg, Mullein Leaf 50 mg, Stinging Nettle 50mg

Suggested dosage: 1-3 x daily

Similar to: Mold X

OVARY UTERUS SUPPORT

Benefits: This blend supports the female reproductive system. Blue cohosh, zinc and phosphorus help to regulate women's cycles and alleviate muscle spasms and may reduce risk for certain cancers

System Supported: Female Reproductive System

Active Ingredients: Calcium (as Dicalcium Phosphate) 26mg, Phosphorus (as Dicalcium Phosphate) 21mg, Zinc (as Citrate) 5mg, Ovary (Bovine) 100mg*, Uterus (Bovine) 100mg*, Blue Cohosh Root 1mg

Suggested dosage: 1-3x daily

Similar to: Ovary Uterus Plus

PARA X

Benefits: This formulation is intended to eliminate parasites from the body through detox. Ingredients like black walnut and wormwood are used to treat parasitic worm infections naturally.

Active Ingredients: Black Walnut (hull) 100mg, Pumpkin Powder (seed) 100mg, Wormwood Powder (aerial parts) 100mg, Hyssop Powder (aerial parts) 50mg, Thyme (leaf) 50mg, Pancreatin 31mg, L-Lysine 25mg, Ox Bile 25mg, Pepsin 17mg, Cellulase 2mg, Bromelain 84 MCU

Suggested dosage: 1-3x daily

Similar to: Para Plus

PROSTATE SUPPORT

Benefits: This formulation is beneficial to the prostate and male reproductive systems. With ingredients like chaga, boron, and betaine, it encourages anti-inflammation and proper function.

System Supported: Prostate

Active Ingredients: Magnesium (as Citrate) 3mg, Zinc (as Amino Acid Chelate) 15mg, Molybdenum (as Amino Acid Chelate) 50 mcg, Potassium (as Aspartate) 4mg, Boron (as Amino Acid Chelate) 250 mcg, Prostate (Bovine) 90 mg*, Juniper Berry 50mg, Chaga Mushroom 20mg, Betaine HCl 5mg, Saw Palmetto Berry 15mg

Suggested dosage: 1-3x daily

Similar to: Prosta Plus

SPLEEN SUPPORT

Benefits: This formulation is beneficial for liver, kidney, and spleen issues. By using dandelion and nettle, this blend helps the endocrine system including the spleen.

System Supported: Lymphatic, Blood

Active Ingredients: Vitamin E (as dl-alpha Tocopheryl Acetate) 75 IU, Bovine Spleen Concentrate 250mcg, Dandelion (aerial parts) 75mg, Nettle (root) 75mg"

Suggested dosage: 1x daily

Similar to: Alpha E Spleen

THYROID SUPPORT

Benefits: When thyroid support is abnormal, the body will call for Thyroid Support. By combining iodine and certain concentrates, they provide the necessary nutrients for proper thyroid function.

System Supported: Thyroid, Adrenal Glands

Active Ingredients: Iodine (from Kelp) 900mcg, Raw Bovine Thyroid Concentrate (Thyroxine free) 60mg, Porcine Adrenal Concentrate 30mg, Raw Bovine Pituitary Concentrate 10mg, Raw Porcine Spleen Concentrate 10mg, Kelp 180mg

Suggested dosage: 1-3x daily

Similar to: Thyro Plus

Notes

[illegible]



CUSTOM
COMPLETE

INDIVIDUAL INGREDIENTS

* Custom Complete Individual Ingredients are not available for purchase

Our Custom Complete Builder allows you to create a supplement by combining blends and ***individual ingredients*** to your customized supplement. These ingredients are uniquely sourced and of the best quality we could find. Suggested use and dosage are different for each ingredient.

ALFALFA

Standard dose: 100-1000 mg (use 200 mg base)

Sub for: Hormonal support, Antioxidant, Blood health, Anti-inflammatory.

Benefits: Alfalfa has been shown to help lower cholesterol and may also have benefits for blood sugar management and relieving symptoms of menopause. People also take it because it contains antioxidants, as well as nutrients like vitamin K, copper, folate, and magnesium.

ALOE VERA POWDER

Standard dose: 250mg

Sub for: Digoxin, Antidiabetes drugs, Sevoflurane, laxatives, diuretics.

Benefits: Aloe Vera Powder exhibits antibacterial and antioxidant properties. This ingredient may help relieve symptoms of diabetes, such as lowering blood sugar levels, skin disorders, GI movements and other inflammatory conditions of the digestive system.

ASHWAGANDHA (TINCTURE)

Standard dose: 600mg

Sub for: Digoxin

Benefits: Ashwagandha is widely used to relieve anxiety and stress levels. This herb has also been known to exhibit anti-inflammatory and antioxidant effects; it also may help to improve blood sugar and respiratory issues.

ASTRAGALUS

Standard dose: 9 to 30 grams per day

Sub for: Immunosuppressants, Lithium

Benefits: Astragalus is used to protect and support the immune system with antioxidant properties. This herb may help to improve heart, kidney, and liver function. It has also been widely used to help control blood sugar.

BLACKCURRANT EXTRACT

Standard dose: 500 mg

Sub for: Boosts immune system, aids arthritis, plaque remover and heart helper, adrenal function

Benefits: Blackcurrant extract contains anti-inflammatory, antiviral, antiseptic, antimicrobial, and antitoxic properties. This ingredient boosts the immune system. The omega fats and flavonoids contained in blackcurrant berries may protect against heart disease and improve blood flow to the heart.

BROCCOLI CONCENTRATE

Standard dose: 500 mg

Sub for: Antioxidants and fiber may aid blood sugar control, support heart health, digestion and reduced constipation, slow mental decline and support healthy brain function, slow the aging process

Benefits: This nutrient rich ingredient may help lower the risk of heart disease and help the body fight against cancers. Other uses include blood sugar control, brain function and detoxification.

CAMU CAMU

Standard dose: 2,500 mg

Sub for: fight inflammation, improved blood sugar levels, antimicrobial properties, blood pressure.

Benefits: This ingredient is high in ascorbic acid (vitamin C) and is used to help fight viral infections. Camu Camu may also help with weight loss by controlling blood sugar levels and inflammation.

CAPE ALOE

Standard dose: 15 mL

Sub for: Exhibit wound healing, laxative properties, antioxidant, anti-inflammatory, antimicrobial, anticancer, antimalarial and anthelmintic activities

Benefits: Cape Aloe is mainly used to treat a variety of diseases including wound healing, burns, eczema, and psoriasis. Cape aloe is also an herbal laxative that helps to regulate bowl movements and regulate digestive health. This herb has at times been called an intestinal cleanser.

CATS CLAW

Standard dose: 30mg

Sub for: Immunosuppressants, High Blood Pressure reducers

Benefits: Cats Claw is commonly used as an anti-inflammatory agent for arthritis and GI inflammation. Cats Claw exhibits antibacterial, antifungal, and antiviral properties which are utilized to fight off persistent infections.

CHAGA

Standard dose: 2000mg

Sub for: Diabetes medications

Benefits: Chaga is used to help lower blood sugar and may help with lowering cholesterol and blood pressure levels. With antioxidant and anti-inflammatory properties, Chaga is often used for arthritis and even slowing down the progression of cancer cells.

CILANTRO

Standard dose: 200 - 500 mg (use 50 mg base)

Sub for: Antimicrobial, Anti-inflammatory, Detox.

Benefits: Cilantro might help remove metals such as mercury, lead, and aluminum from the body. Removing these metals from the body might help some antibiotics and antiviral medicines work better. Cilantro might also help eliminate certain bacteria that cause infections. Some health benefits may include reducing heart disease, supporting energy levels and improvement in individuals with diabetes.

CINNAMON 20:1

Standard dose: 1000mg

Sub for: Antioxidant, anti-Inflammatory, cut the risk of heart disease, improve sensitivity to the hormone insulin, lowers blood sugar levels, powerful Anti-Diabetic effect, beneficial effects on neurodegenerative diseases.

Benefits: Cinnamon is a very powerful antioxidant that is used for a multitude of health issues such as heart disease, insulin resistance, diabetes, and blood sugar regulation and much more. The antiinflammatory effects may help lower your risk of disease.

COENZIME Q10

Standard dose: 200mg

Sub for: Diabetes, blood thinning, or thyroid medications

Benefits: CoQ10 has been linked to improved exercise performance, heart health and migraines. It may also reduce oxidative damage and can assist in the prevention and treatment of cancer.

COLOSTRUM POWDER

Standard dose: 1000mg daily dose

Sub for: Immune, growth and tissue repair factors

Benefits: This ingredient has been shown to improve the immune system and gut health. Colostrum Powder is high in IgG which is a very powerful antibody to help the body's immunity.

FULVIC ACID

Standard dose: 250 - 500 mgs (use 150 mg as base)

Sub for: Allergies, Anti-Inflammatory, Brain Health

Benefits: Fulvic acid might block reactions in the body that cause allergy symptoms. It might also interrupt steps involved in the worsening of brain disorders such as Alzheimer disease. Additionally, fulvic acid might reduce swelling and prevent or slow the growth of cancer.

GABA

Standard dose: 100-300mg

Sub for: Relieving anxiety, improving mood, reducing symptoms of premenstrual syndrome (PMS), and treating attention deficit-hyperactivity disorder (ADHD), promoting muscle relaxation and tone, burning fat, stabilizing blood pressure, and relieving pain aids.

Benefits: Gaba is an Amino Acid naturally produced by the body to help promote sleep, relieve anxiety, and protect the brain. It is known to produce a calming effect. Gaba may also help with symptoms of PMS, ADHD, Blood pressure stabilization, relieving pain aids, and supporting lean muscle growth.

GARLIC

Standard dose: 200mg

Sub for: Isoniazid, NNRTIs, Saquinavir, Estrogens, Cyclosporine, Anticoagulant

Benefits: Garlic Powder is known to help regulate blood pressure, lower cholesterol levels, improve the immune system, reduce the risk of certain cancers, and aid in digestion and include many more benefits. This ingredient is nutrient rich and has many beneficial bioactive compounds.

GINGER ROOT

Standard dose: 500mg

Sub for: Blood thinners

Benefits: The widest known benefit of ginger is its anti nausea properties. Ginger also helps to manifest weight loss by improving the digestion process. This ingredient contains antibacterial and antiinflammatory properties and is thought to slow down the growth of some cancers and aid in insulin and cholesterol levels.

GRAVIOLA

Standard dose: 500 to 1,500 milligrams

Sub for: Antioxidant, anti-inflammatory properties, help lower blood sugar, help lower blood pressure, prevent ulcers, help treat herpes, may be anti-cancerous

Benefits: This ingredient contains many powerful antioxidants. These antioxidants have been studied to prevent cancer, kill some cancer cells, fight off bacteria, and reduce inflammation. It may also help to improve stomach ailments, parasitic infections, and hypertension.

GREEN TEA

Standard dose: 676mg

Sub for: High levels of polyphenols, improved cognitive function, boosted metabolism, decreased risk of cardiovascular disease.

Benefits: This ingredient is used to control bleeding and heal wounds, aid digestion, improve heart and mental health, and regulate body temperature. May have positive effects on weight loss, liver disorders, type 2 diabetes, Alzheimer's disease.

GLUTATHIONE

Standard dose: 600mg

Sub for: Glutathione Improves the Antioxidant Activity of Vitamin C in Human Lens and Retinal Epithelial Cells: Implications for Vitreous Substitutes

Benefits: Glutathione is a tripeptide with multiple functions in the body¹², including: working as an antioxidant to breakdown free radicals, supporting immune function, regenerates vitamin C and E, activation of some enzymes, helps liver and gallbladder process fats, metabolizes some toxins, creation and repair of DNA.

HAWTHORN BERRY PE 1/8% FLAVONES

Standard dose: 50-100 mg

Sub for: Digoxin, High Blood Pressure, Blood Flow Altering

Benefits: This berry is loaded with antioxidants and can be used to help protect against heart disease, high blood pressure and high cholesterol and heart failure. By helping with circulation in swollen legs and feet, this ingredient may even improve insomnia. Human studies suggest. Hawthorn increases coronary artery blood flow.

INNOSLIM

Standard dose: 250 mg

Sub for: Regulate blood sugar and lipid metabolism

Benefits: InnoSlim® is a compound extracted from highly fractionated proprietary NLF-05 Panax notoginseng and Astragalus membranaceus using a proprietary pharmaceutical extraction technology. InnoSlim® is the only nutraceutical that has been demonstrated to increase adiponectin levels and AMPK activity, and lower glucose levels in healthy obese, and pre-diabetic hyperlipidemia human subjects.

LIONS MANE

Standard dose: 200mg

Sub for: Anti-Inflammatory, Antioxidant, Anxiety and Depression

Benefits: Research has found that lion's mane may protect against dementia, reduce mild symptoms of anxiety and depression and help repair nerve damage. It also has strong anti-inflammatory, antioxidant and immune-boosting abilities and been shown to lower the risk of heart disease, cancer, ulcers and diabetes in animals.

L-THEANINE

Standard dose: 200mg - 400mg

Sub for: Anti-anxiety, relaxation

Benefits: This ingredient supports stress-relief/anxiety, boosts focus, and enhances immunity by reducing inflammation. May also support blood pressure and improve sleep. Often added as a powerful anti-oxidant commonly used in excess ENOX2 therapy treatments to boost effectiveness.

MILK THISTLE

Standard dose: 420 mg

Sub for: Systems supported: liver, gallbladder

Benefits: Historically, people have used milk thistle for liver disorders and gallbladder problems. Milk thistle is promoted as a dietary supplement for hepatitis, cirrhosis, jaundice, diabetes, indigestion, and other conditions. Consider using this ingredient to protect and detox the liver.

NMN- NICOTINAMIDE MONONUCLEOTIDE

Standard dose: 250 mg

Sub for: High blood pressure, liver health, diabetes.

Benefits: NMN supplements stimulates the activity of mitochondria, microscopic organelles that are vital to our metabolism. The powerhouses of the cells, mitochondria transform glucose and oxygen into cellular energy – without them, cells would lack energy and die.

RED GINSENG

Standard dose: 200mg-400mg

Sub for: Immune system, antioxidant support, blood sugar, energy

Benefits: This ingredient may help increase insulin production, enhance blood sugar uptake in cells, and provide antioxidant protection. You may also see an improvement in energy production and immune system health

ROSEMARY

Standard dose: 100-600 mg (use 100 mg base)

Sub for: Antispasmodic, Brain health, Astringent, Skincare/Hair growth supplements

Benefits: Rosemary has been used in traditional medicine for its astringent, tonic, carminative, antispasmodic, and diaphoretic properties. Rosemary is one of the oldest known medicinal herbs, used centuries ago to enhance mental function and memory.

PARSLEY

Standard dose: 200-800 mg (use 100 mg base)

Sub for: Diuretic, Anti-Inflammatory, Bone Health, Antioxidant

Benefits: Parsley works as a powerful natural diuretic and can help reduce bloating and blood pressure. Parsley is loaded with vitamin K, which has been linked to bone health. The vitamin supports bone growth and bone mineral density. Parsley carries high levels of beta carotene, folate and vitamin Vitamin B12 Methylcobalamin.

QUERCETIN

Standard dose: 50-500 mg (Use 50 mg as base)

Sub for: Anti-Inflammatory, antihistamine, antioxidants, heart support

Benefits: Quercetin may help protect against heart disease and cancer. Quercetin can also help stabilize the cells that release histamine in the body and thereby have an anti-inflammatory and antihistamine effect.

SAW PALMETTO EXTRACT

Standard dose: 320mg

Sub for: Estrogen-based medications

Benefits: This herb packs many potential health benefits. Such benefits may include increased testosterone levels, improve prostate health, reduce inflammation, aid in hair loss, and aid in urinary tract function. Magni

SCELETIUM

Standard dose: 15-40 mg (use 5 mg as base)

Sub for: Anxiety, Antidepressant, Neurocognitive

Benefits: Sceletium tortuosum has traditionally been used for mood-altering purposes, including for relief of anxiety and depression. Limited clinical trials have been conducted evaluating potential anxiolytic, neurocognitive, and antidepressant activities of S. tortuosum.

SHILAJIT

Standard dose: 300 mg

Sub for: Low testosterone level, Chronic fatigue syndrome, Aging

Benefits: Shilajit contains fulvic acid and more than 84 minerals, so it offers numerous health benefits. It can function as an antioxidant to improve your body's immunity and memory, an anti-inflammatory, an energy booster, and a diuretic to remove excess fluid from your body.

STINGING NETTLE

Standard dose: 360 mg

Sub for: Lithium, Diabetes, High Blood Pressure, Sedatives, Blood Thinners

Benefits: This herb has been used for many years to help treat inflammation, sore muscles, and joints, enlarged prostate and more. Other common issues Stinging Nettle may help with is blood sugar control, high blood pressure, anemia, gout, and urinary tract health.

SUMA ROOT

Standard dose: 500–1,500 mg

Sub for: Chronic inflammation, High levels of cortisol (the stress hormone), Impaired cognitive function

Benefits: Suma Root may act as an adaptogen, meaning that it can help the body fight stressors like bacteria, toxins, or mental stress. This root may provide relief from chronic inflammation or cortisol issues. It may also be used in cancer treatments. Suma root has also been linked to aid in sexual dysfunction.

TUMERIC ROOT EXTRACT 4:1

Standard dose: 500mg

Sub for: Blood clotting

Benefits: This ingredient is a natural anti-inflammatory and a powerful antioxidant. Turmeric, when taken internally, is commonly promoted as a dietary supplement for a variety of conditions, including arthritis, digestive disorders, respiratory infections, allergies, liver disease, depression, and many others. Turmeric may also have anticancer properties.

VITAMIN C

Standard dose: 90mg

Sub for: Chemotherapy, blood thinners

Benefits: May reduce your risk of chronic disease, may help manage high blood pressure, may lower, may reduce blood uric acid levels and help prevent gout attacks risk of heart disease, helps prevent iron deficiency, boosts immunity.

VITAMIN E (MIXED TOCOPHEROLS)

Standard dose: 2000mg

Sub for: Aspirin, blood thinners

Benefits: Antioxidant, longer cell life, balance oil production, nourishes skin

Notes

[illegible]

PRODUCT CATALOG

The information contained herein has not yet been evaluated by the Food and Drug Administration. All Products and Equipment presented or represented by Alive Innovations LLC, its entities, employees, associates and assigns are not intended to diagnose, treat, cure or prevent any disease. This information is for educational purposes and is not intended to make claims about any product or service.

For more information call 800 454 1920 /
i n f o @ a l i v e i n n o v a t i o n s . c o m

Contact info:

Sales@aliveinnovations.com

General Information:

info@aliveinnovations.com

Orders:

orders@aliveinnovations.com

Phone number: 800.454.1920