

PRODUCT

# CATALOG

2025



**ALIVE**  
**INNOVATIONS**



**CUSTOM**  
**COMPLETE**

Contact info:  
[sales@aliveinnovations.com](mailto:sales@aliveinnovations.com)

General Information:  
[info@aliveinnovations.com](mailto:info@aliveinnovations.com)

Orders:  
[orders@aliveinnovations.com](mailto:orders@aliveinnovations.com)

Phone number: 800-454-1920

Version: 03.04.25

# About Us

Alive Innovations – Integrated Healing Technologies for Naturopaths, Chiropractors, & Wellness Centers equipping naturopathic doctors, holistic healers, chiropractors, and wellness centers with the most advanced diagnostic equipment and natural treatment plans in the industry. At Alive Innovations, we scour the planet, investigating new advances in allopathic and holistic treatments from the brightest minds and innovators in the industry with one purpose in mind: to bring you the latest technology to assist you in caring for your patients. Our state-of-the-art holistic healing equipment, historical data, and individualized treatment plans allow doctors and practitioners to digitally scan and analyze each patient individually. Alive Innovations has created an application that enables you, as the practitioner, to custom create a supplement for any patient.



- + NO FILLERS
- + INNOVATIVE
- + NATURAL

## PRODUCT CATALOG

Our line of custom formulations is proven in both quality and efficacy. We have worked with some of the top doctors to put together these formulations to best serve both practitioners and patients. We believe in solving problems at the source, rather than only treating symptoms. Each supplement is pure, using the minimum amount of binders and other additives; only enough to make the product convenient and easy to take for your patient. Our network members are kept up-to-date with the latest technology advancements and disease treatment protocols. You'll enjoy access to our training portal to equip you with the best practices for our successful wellness center business model. Using only the best bio-energy testing equipment to identify imbalances in your nervous system, our partners find the best results using our holistic approach to naturopathic medicine. Partner with us to get the latest advancements in functional medicine and find out how to make your practice more profitable.



# BEST SELLERS

DNT 53

P.20



## BLOOD SUPPORT

DNT 53 is a blood boosting product that is a rich source of complex biochemical constituents that help to boost the body's immune system and defenses against viruses, bacteria, fungus, and free radicals.

GI PRO

P.21



## GI SUPPORT

GI PRO has the most robust and effective Probiotic Strains. Reduces Inflammation. These primary strains and unique blend are exactly what the body needs to rebuild the gastrointestinal tracks microbial ecosystem without introducing additional foreign bacteria. This formula can also help your body break down carbohydrates, fats, and proteins with digestive enzymes, allowing for proper absorption of nutrients.

H951x

P.22



## IMMUNE SUPPORT

This complex compound and micronutrients and metabolites have been shown to have different biological properties, such as anti-viral, antibacterial, anti-inflammatory, anti-mutagenic and anti-carcinogenic activities. Also, may support hormone modulation.

## INFORCEx

P.23



### URINARY TRACT HEALTH

This product helps to eliminate inflammation in the urinary tract along with the prostate. The minerals and fatty acids in this blend are used to help nourish cell membranes and maintain a healthy hormonal balance.

## SB PRO

P.25



### SUGAR BALANCE

SB PRO is a unique formulation designed to stimulate weight loss, balance metabolism and lower blood sugar by using a proprietary blend of antioxidants, amino acids, herbs, vitamins and minerals. SB PRO uniquely provides support for proper cell function and optimal health by regulating the metabolism.

## V MAX

P.27



### ENERGY SUPPORT

V MAX® is an advanced Nitric Oxide support blend based on Nitrosigine®. This compound has proven to increase artery diameter as much as 30% in a single dose over a placebo, and as much as 5x more effective than AKG alone. AlphaGPC® has been proven to support brain health by increasing oxygenation to aid in concentration, and focus. V MAX blend of Vitamins, Trace Minerals, Botanicals, Coenzymes bound in a berry flavor designed to support wellness and recovery.



# BRITE Aesthetics

Unveil Your  
Radiance Naturally

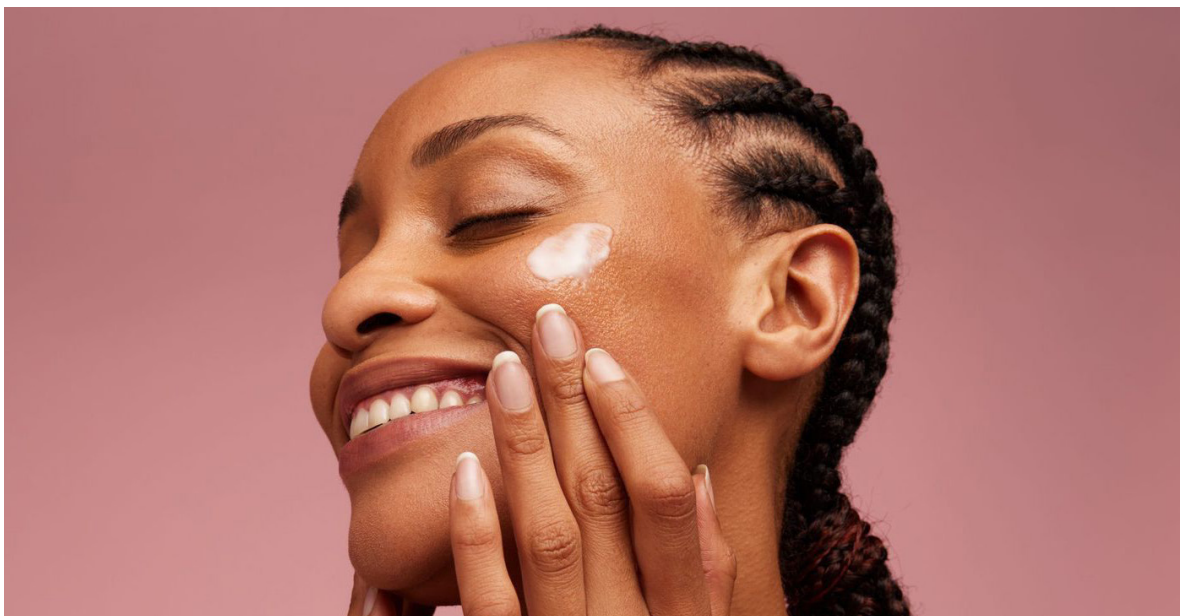
## PRODUCT CATALOG

At Brite Aesthetics, we are proud to be a renowned natural skincare brand that places a premium on harnessing the power of natural and plant-based ingredients. Our commitment is simple yet profound: we are dedicated to delivering skincare solutions that are both effective and safe, all while steering clear of harsh chemicals, synthetic fragrances, and artificial colors.

Our product line is designed to cater to a diverse array of skin concerns, ensuring that your unique needs are met with the utmost care and attention. Discover a holistic approach to skincare with our meticulously crafted range, which includes cleansers, serums, masks, and more.

Every Brite Aesthetics product is the result of a thoughtful formulation process, blending the best nature has to offer. **We combine botanical extracts, vitamins, and antioxidants to ensure that your skin receives the pampering it deserves.**

When you choose Brite Skincare, you're embracing the power of nature and making a conscious choice for your skin's health and radiance. **Experience the beauty of natural ingredients and let your inner glow shine through with Brite Aesthetics.**





## CAMU + SERUM

Smooth and healthy skin.  
Promotes even skin tone.  
Supports tissue repair.  
Fights free radical damage.

# Best Seller Camu + Serum

High concentration of natural vitamin C : Camu + Serum contains a unique concentration of natural vitamin C derived from Camu Camu.

- Enhanced absorption and natural protection.
- Rebuilds collagen and elastin.
- Smooth and healthy skin.
- Promotes even skin tone.
- Supports tissue repair.
- Fights free radical damage



## CAMU + SERUM

Content: **1 OZ**

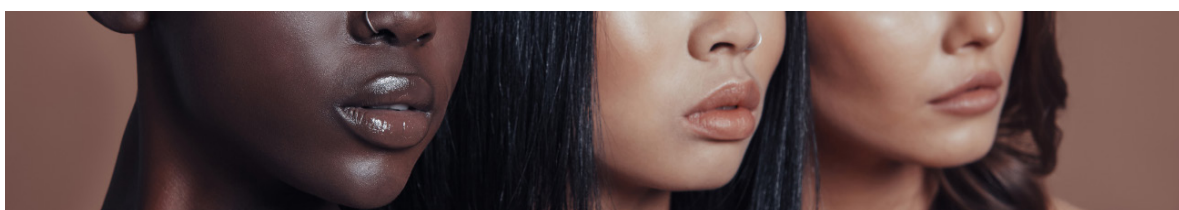
Type: **SERUM**

**Suggested use:** Camu + Serum provides a unique concentration of natural vitamin C found in Camu Camu, and is found to be 10,000 times more potent than traditional vitamin C. Its complex formula provides support to skin and soft tissue by improving absorption and natural protection. This silky application followed by a mild astringent feeling helps to rebuild collagen and elastin, leaving the skin feeling smooth and healthy. Daily application may result in a more even skin tone due to its unique ability to support tissue repair and free radical damage.

**Benefits:** Camu + Serum contains high vitamin c concentration, enhanced absorption and natural protection, rebuilds collagen and elastin, smooth and healthy skin, even skin tone, tissue repair and fights free radical damage.

**Ingredients:** Water, Myricaria Dubai Fruit (Camu Camu) Extract, Aloe Barbadensis Leaf Juice Glycerin Sangre de Drago (Croton Lechleri) Extract, Algae Extract, Niacinamide, Uncaria Tomentosa (Cat's Claw) Extract, Tocopherol, Hymenaea Coubaril (Jatoba) Extract, Stevia Rebaudiana Leaf Extract, Pfaffia Paniculata (Suma) Extract, Maytenus Illicifolia Leaf (Espinheira Santa) EXtract) Tetrahexyldecyl Ascorbate Panthenol, Ubiquinone (Coenzyme Q10), Chlorella Vulgaris Extract, Sodium Ascorbate, Sunflower Lecithin, Grapefruit Seed Extract, Glucose, Retinyl Palmitate, Lemongrass Oil, Lemon Oil, Acacia Senegal Gum, Sandalwood Oil, Citrus Water Fragrance, Caprylhydroxamic Acid, Cellulose Gum, Acid Polysaccharide, Caprylyl Glycol, Potassium Sorbate, Cocklebur.

**Suggested dosage:** For external use only, apply at night after washing your face. For better results use our REFINING CLEANSER





# Vital Stem Cell Mask

Revive Your Skin's Natural  
Potential with Plant Stem  
Cells: Where Regeneration  
Meets Innovation!



# Vital Stem Cell Mask

- Our Vital Stem Cell Mask is precisely that. It's formulated with plant cell cultures, which have been rigorously studied and proven to work wonders in rejuvenating your skin. This fusion of botanical magic breathes new life into your skin cells, leaving you with a youthful, radiant complexion.



## VITAL STEM CELL MASK

Content: **1.7 OZ**    Type: **MASK**

**Suggested use:** Potent ingredients like Sodium Hyaluronate and Sea Holly Plant Stem Cells rejuvenate while Sodium Alginate and Caesalpinia Spinosa Gum invigorate. Vitamin-rich Cucumber Extract soothes as Tetrahexyldecyl Ascorbate and Lactic Acid renew, leaving skin balanced and radiant.

**Benefits:** Revives tired skin cells, helping them regain their vitality and youthful appearance, rejuvenate and refresh, leaving you with a natural radiance.

**Ingredients:** Purified Water, Witch Hazel, Sodium Hyaluronate, Potassium Azeloyl Diglycinate, Cucumber Extract, Sodium Alginate, Di-Panthenol, Polysorbate 80, Isopropyl Palmitate, Sea Holly Plant Stem Cells, Tetrahexyldecyl Ascorbate, Lacto Ceramide, PVP Polyvinylpyrrolidone, Vitamin E Acetate, Lactic Acid, Caesalpinia Spinosa Gum, Sodium Bicarbonate, Phenoxethanol, Cucumber Peel Extract, Cucumber Fragrance, Fulvic Acid, Cocklebur.

**Suggested dosage:** Apply thin layer to clean skin and massage into face and neck area. Allow to set for 15 to 20 minutes. Rinse with warm water and pat dry. Use Camu+ Serum. Apply regularly



# Refining Cleanser

Discover the Beauty of  
Nature's Harmony

## REFINING CLEANSER

- Embark on a journey of skin transformation with Refining Cleanser. Let the harmonious blend of natural wonders embrace you, nurturing your skin's vitality like never before. Embrace nature's gift to achieve the skin you've always dreamed of.



## REFINING CLEANSER

Content: **1.7 OZ**    Type: **CLEANSER**

**Suggested use:** A fusion of nature's finest ingredients. Infused with Olive Squalene, our cleanser harmonizes nature's essences. Aloe, Witch Hazel Cucumber Extract Lactic Acid and Sodium Bicarbonate invigorate gently. Elevate your self-care with our called blend, nurturing and rejuvenating skin's vitality.

**Benefits:** Hydrates the skin, soothes irritation, may reduce signs of aging, Protects against oxidative damage, Soothes skin inflammation, Supports skin cell renewal

**Ingredients:** Purified Water, Glycerin (Kosher), Carbopol Ultrez 10, Witch Hazel, Aloe Vera Gel, Cucumber Extract, Phenoxyethanol, Lactic Acid, Polysorbate 80, Squalene Oil (from Olive), Decylglucoside, Cocamidopropyl Beta, Fragrance, Cocklebur, Sodium Bicarbonate, Xanthan Gum.

**Suggested dosage:** Squeeze a small amount into palms and rub together. Gently massage the face avoiding the eye area and rinse thoroughly. Can be used daily.



V MAX

## THE ULTIMATE NITRIC OXIDE NUTRITION

Why is nitric oxide so important for the body?

Nitric oxide plays a valuable role in nearly every one of our cells. When released by the endothelium of blood vessels, NO helps to relax the muscles lining your blood vessels, allowing them to widen. This vasodilation boosts the flow of blood, nutrients, and oxygen to every part of your body. It also helps to control blood pressure, reduce the effects of angina, and reduce the overall risk of heart disease. Nitric oxide can also help to reduce inflammation. It helps prevent platelets and white blood cells from adhering to the lining of blood vessels, which is crucial for reducing the buildup of plaque in the arteries. NO acts like a chemical messenger,



**MADE IN USA**





relaying information between the nerves and cells that control a range of bodily functions, from digestion to sexual function.

This has led researchers to focus on nitric oxide as a potential agent for medical therapies.



# STOCK BLENDS

Alive Innovations Stock Supplements are designed to aid in specific health issues and provide relief of symptoms. We strive to deliver the safest products with the highest quality ingredients. Our Stock Supplements consist of sublingual tablets and veggie capsules. This method is to ensure nutrient delivery into the body and possibly promote faster intake of supplements.



## ARWYPRO

Content: **90 cap** Type: **Respiratory System**

**Suggested use:** Respiratory System, Oxygenation, Sinus, Inflammation, Cardiovascular System, Expectorant, Relief from Cough, Asthma, Throat, GI support and Constipation, Antioxidant

**Benefits:** ARWY PRO™ is a powerful herbal formulation that supports throat and respiratory system disorders. With these powerful antioxidants and ingredients, ARWY PRO helps to suppress proinflammatory cytokine. May provide relief from cough, asthma, bronchitis, and laryngitis. Natural expectorant and helps to relieve inflammation\*

**Ingredients:** Curcuma Longa Linn, Pistacia chinensis Burgo, Pistacia chinensis Burgo, Cinnamomum zeylanicum, Taxus baccata Linn, Piper longum Linn, Terminalia bellerica Roxb., Glycyrrhiza glabra Linn, Adhatoda Visca Nees, Terminalia chebula Retz

**Suggested dosage:** 2 capsules 3x daily or as directed by a healthcare professional or as directed by healthcare professional



## B COMPLEX

Content: **60 tab** Type: **General Health**

**Suggested use:** Brain Health, Energy, Cell Function, Digestion

**Benefits:** B Complex is a combination of B vitamins that are essential nutrients to the body. With this convenient combination, B Complex may help support metabolism, proper cell function and energy.\*

**Ingredients:** Vitamin B12 (as cyanocobalamin), B1 (as thiamine mononitrate), B2 (as Riboflavin), B3 (as niacinamide), B6 (as pyridoxine HCL), Folate (as folic acid), Biotin, Pantothenic Acid (as calcium pantothenate), p-Aminobenzoic Acid (PABA), Stevia Leaf Extract

**Suggested dosage:** 1 quick dissolve tablet taken daily or as directed by a healthcare professional

## B12 1000

Content: **60 tab** Type: **General Health**

**Suggested use:** Brain Health, Energy, Cell Function, Digestion, Blood & Red Blood Cell, Nervous System, Mood & Mental Health, Bone Health, Hair, Skin, Nails

**Benefits:** 1,000 MCG of vitamin B12. This nutrient is highly involved in metabolism and blood and nerve cells. Our vitamin B12 is very easily absorbed in a sublingual method. B12 also helps the body convert fats and proteins into energy.\*

**Ingredients:** Vitamin B12 Methylcobalamin 1000 mcg

**Suggested dosage:** 1 quick dissolve tablet taken daily or as directed by a healthcare professional





## B12FOLATE

Content: **60 tab** Type: **General Health**

**Suggested use:** Supports brain health, healthy DNA formation, cognitive function, metabolism, liver health, and nerve function..

**Benefits:** Combines the naturally occurring form of Folate (Vitamin B9) with Methylcobalamin (Vitamin B12) to provide essential B vitamins. This combination may help support red blood cell production, metabolic function, and overall well-being.\*

**Ingredients:** Vitamin B12 (Methylcobalamin) - 1,000 mcg, Vitamin B6 - 2 mg, Methylfolate - 1,667 mcg DFE

**Suggested dosage:** Take 1 rapid-dissolve tablet daily or as directed by a health-care professional.



## BIOTIN

Content: **100 tab** Type: **Hair & Nails**

**Suggested use:** Hair, nails, metabolism.

**Benefits:** 5,000 MCG of Biotin is a core nutrient used in many processes in the body. Biotin is shown to support hair, skin, nails and metabolism.

**Ingredients:** Biotin 5,000 mcg/100 ct

**Suggested dosage:** 1 rapid dissolve tablet daily or as directed by healthcare professional



## BRNPRO

Content: **1 oz** Type: **Neurological Health**

**Suggested use:** BRN PRO - 1 oz sinus spray - is an Advanced Micro Blend of nutrients designed to support the neuroimmune system delivered via sinus cavity.

**Benefits:** Protects brain cells, Improves cognitive function, Reduces the effects of aging, Supports healthy mood.

**Ingredients:** Proprietary Blend of Herbal, Glandular & Nutrient essences: 5-HTP, Acetyl Cysteine, Amonium Carbonate, Arginine, Aspartic Acid, BDNF, Cherry plum, Choline Chloride, Clematis, Curcumin, Cysteine, DHEA, Gingko, Glutamic acid, Glycine, Histidine, Impatiens, Isoleucine, Leucine, Lipoic Acid, Luffa fruit, Lysine, Malic Acid, Melanin, Melatonin, Methionine, NAD, Onion, Phenylalanine, Rock Rose, Star of Bethlehem, Taurine, Tryptophan, Tyrosine. Sus &/or Bovine essences of: Adrenal, Collagen, Connective tissue, Lung, Lymph node, Mucosa, Peyer's Patches, Thymus.

**Suggested dosage:** 1 spray up each nostril. Use 2-3 times daily as needed.



## BODYDX

Content: **120 cap** Type: **Detox**

**Suggested use:** Detox, Heavy Metal Detox, Support Drainage Pathways, Environmental Detox Support, Arterial Health Support, Antioxidant, Plaque Build up, Radiation, Mitochondrial function, DNA Repair

**Benefits:** BODY DX is designed to support detoxification of environmental chemicals, heavy metals such as mercury and lead as well as unwanted mineral deposits in arteries and throughout the body. BODY DX supports removal of other environmental toxins through drainage pathways and may support removal of excess cholesterol build up\*.

**Ingredients:** Molybdenum 100mcg, Zinc 2mg, Selenium 100mcg, Proprietary Herbal Blend 1280mg, Calcium Disodium (EDTA), Dietary sulfur (MSM), Dandelion, Camu camu, Kelp, Milk Thistle, Alpha Lipoic Acid (ALA), Chlorella, Shilajit, Cilantro, Nicotinamide adenine dinucleotide (NAD), N-Acetyl L-Cysteine, Citrus Pectin, Stinging nettle, Fulvic acid, Uva ursi, Garlic, Parsley

**Suggested dosage:** 2 capsules 3x daily or as directed by a healthcare professional. Take V MAX and or MultiVite with protocol recommended. HydroMin or MultiVite while using this product.



## CARCTOL

Content: 120 cap    Type: Alkalinity support

**Suggested use:** Immune Support, Alkalinity, Libido and Hormones, Anti-Inflammatory, Antimicrobial, Detoxifier, Natural source of Iron, Skin Issues (eczema, psoriasis, etc.)

**Benefits:** CARCTOL is an advanced herbal blend aids in the production of Natural Killer Cells (NKC) and macrophage activity of the immune system. Carctol is used to help support the body during illness. These herbs work synergistically by supporting cardiovascular health, elimination of excess acids in the body, cholesterol reduction and hormones.\*

**Ingredients:** Blepharis Edulis, Piper Cubeba Linn, Smilax China Linn, Hemidesmus Indicus, Tribulus Terrestris, Ammannia Baccifera Linn, Lepidium Sativum Linn, Rheum Emodi wall

**Suggested dosage:** 1 capsules every 4 hours or as directed by a healthcare professional. as directed by a healthcare professional.



## COLEZ

Content: 90 cap    Type: Microbiome Health

**Suggested use:** Peristalsis function and microbiome health, Blood sugar, Detoxification, Natural Laxative, Detox Pathways (Liver, Kidney, GI), Free radicals

**Benefits:** COLEZ is an advanced colon detox formula that supports proper peristalsis function and microbiome health. Taking 1-3 COLEZ daily depending on need will support regular elimination and detoxification. COLEZ antioxidant and formula may also support the immune system and ability to fight free radical damage and support.\*

**Ingredients:** Proprietary Herbal & Amino Blend: Psyllium husk, Guar gum, Cascara sagrada, Senna leaf, Celery, Cinnamon, Ginger, Prune, Raspberry leaf, Alfalfa, Aloe vera, Black Walnut hull, Buchu, Barberry root, Citrus pectin, Dandelion, Echinacea, Licorice root, Marshmallow root, Montmorillonite, Uva ursi, Yellow dock, Aloe ferox, Garlic, Cayenne, Superoxide dismutase, Rosemary leaf, Peppermint, L-cysteine)

**Suggested dosage:** 2 capsules as needed or as directed by a healthcare professional.



## COLLAGENX

Content: 12.7 oz    Type: Body Composition

**Suggested use:** Improve Body composition

**Benefits:** COLLAGENx is our robust anti-aging formula, containing collagen peptides, biotin, vitamin C and a full amino acid profile. Collagen is the most abundant substance in the body and helps give structure to our hair, skin, nails, bones, ligaments and tendons. When we get older, the production of collagen begins to slow down. Supplementing with collagen peptides (from hydrolyzed bovine collagen) may help with the body's need for these building blocks.

**Ingredients:** Biotin, Vitamin C (as ascorbic acid), Hyaluronic Acid (from sodium hyaluronate) Collagen Peptides, Leucine, Lysine, Methionine, Phenylalanine, Proline Serine, Threonine, Tyrosine, Valine, Alanine, Arginine, Aspartic Acid, Glutamic Acid Glycine, Histidine, Hydroxylysine, Hydroxyproline, Isoleucine.

**Suggested dosage:** Mix one scoop with 8 to 10 ounces of water or your favorite beverage. This is a tasteless supplement.



## CHROMIUM

Content: **60 tab** Type: **Energy**

**Suggested use:** Chromium may support insulin sensitivity and enhance the metabolism of proteins, carbohydrates, and lipids.

**Benefits:** Chromium is a trace mineral that may support the body's natural ability to enhance insulin sensitivity and improve the metabolism of fats, proteins, and carbohydrates. Additionally, it may help maintain healthy blood sugar levels within the normal range when used as part of a balanced lifestyle.\*

**Ingredients:** Chromium - 200 mcg per tablet

**Suggested dosage:** As a dietary supplement, take 1 tablet 3 times daily, or as directed by a healthcare professional.



## CT DEFENSE

Content: **60 tab** Type: **Inflammation**

**Suggested use:** Antioxidant, Anti-Inflammatory, ENOX2 Protein Mitigation, Immune, Blood Health

**Benefits:** CT DEFENSE is a delayed release (Enteric) blend of concentrated green tea containing EGCG and other agents from chili peppers taken in higher doses such as 1 capsule 6x daily may help block the ENOX2 protein that is associated with abnormal cell growth while building the immune system and natural defenses against free radicals. CT DEFENSE may help with abnormal cell growth, aging-related disorders and reducing inflammation.\*

**Ingredients:** Proprietary Blend 420 mg blend of Green Tea (Camellia sinensis leaf), Guajillo Chilies (Capsicum annum whole dried), Reshi (Organic), Chanterelle (Organic), Turkey Tail (Organic), Shitake (Organic), Marigold (SFE), Carob powder (organic) Turkey Tail and Chanterelle Mushrooms, Carob Powder (organic)

**Suggested dosage:** 1 capsule daily or as directed by a healthcare professional.



## D3

Content: **100 tab** Type: **Hormone Health**

**Suggested use:** Hormone Health, bone health, immune health and the nervous system

**Benefits:** D3 is made in the skin when the skin is exposed to sunlight. Some individuals may experience a deficiency in this vitamin.

**Ingredients:** 5000 IU Cholecalciferol

**Suggested dosage:** 1-3 tablets per day, Rapid Dissolve tablet



## DHEA

Content: **30 tab** Type: **Hormone Balance**

**Suggested use:** DHEA may support hormone balance and may be helpful for individuals seeking support for adrenal insufficiency. It may also be used for emotional support and may support skin health, bone density, and overall well-being.

**Benefits:** DHEA is a naturally occurring hormone that may support emotional well-being and mental focus. It may assist with hormone balance, adrenal health, and overall mental stability. Additionally, DHEA may support skin health, bone density, and brain function, promoting overall vitality.\*

**Ingredients:** DHEA - 25 mg per tablet

**Suggested dosage:** As a dietary supplement, adults take 1 tablet once daily, or as directed by a healthcare professional.



## DNT53

Content: **60 caps** Type: **Body Composition**

**Suggested use:** Supports management of Thrombocytopenia (Low Platelet counts) by supporting RBC, WBC and Bone Marrow and Blood Production, Anti-Fungal, Anti-Bacteria, Anti-Viral, Immune System, General Performance

**Benefits:** DNT 53 is a blood boosting product that is a rich source of complex biochemical constituents that help to boost the body's immune system and defenses against viruses, bacteria, fungus, and free radicals.\*

**Ingredients:** Proprietary Blend Tribulus Terrestris Linn, Prosopis Spicigera Linn, Tinospora Cordifolia, Carica Papaya Linn, AstraGin® (Astragalus & Notoginseng)

**Suggested dosage:** 1 capsule daily or as directed by a healthcare professional.



## ENHANCEx

Content: **60 caps** Type: **Sexual Health**

**Suggested use:** Sexual Health, Libido, Circulation, Performance, Hormones, Endurance, Mood, Vitality

**Benefits:** ENHANCEx is a powerful herbal blend to support micro circulation, libido and increased sensitivity while naturally supporting hormones. ENHANCEx supports mind and body, and can be used by both males and females.\*

**Ingredients:** Acacia Arabica, Eurycoma Longifolia, Anacyclus Pyrethrum, Piper Cubeba Linn, Turnera Diffusa, Maca, Chlorophytum borivilianum, Polygonatum Verticillatum, Pueraria Tuberosa, Korean Red Ginseng (Panax ginseng) Velvet Bean (Mucuna Pruriens), Red Reishi Mushroom, Fadogia Agrestis, Horny Goat Weed, Dactylorhiza Hatagirea, Mondia whitei, Montanoa Tomentosa, Lion's Mane, Suma, Mucuna Pruriens, Asparagus Racemosus, Cordyceps Powder, Crocus Sativus, Black Ginger, Pausinystalia Yohimbe Myristica fragrans (Nutmeg & Clove), Sceletium

**Suggested dosage:** 1 capsule 2x daily or as directed by a healthcare professional.



## GABA

Content: **100 tab** Type: **Stress Management**

**Suggested use:** GABA may support mood balance, mental focus, and relaxation, and it may assist in maintaining healthy blood pressure levels and alleviating anxiety.

**Benefits:** GABA (Gamma-Aminobutyric Acid) is a naturally occurring amino acid that acts as a major neurotransmitter in the brain. It may help support mood balance, promote relaxation, and assist in maintaining healthy blood pressure levels. Additionally, GABA may help support healthy sleep patterns, contributing to overall mental and emotional well-being.\*

**Ingredients:** 100mg GABA

**Suggested dosage:** 1 Rapid Dissolve tablet



## GRAVx

Content: **100 cap** Type: **Antioxidant Support**

**Suggested use:** Immune System, Cellular Health, Antioxidant, Cardiovascular, Inflammation, Blood Health, Healing, GI Health

**Benefits:** GRAVx is an advanced antioxidant concentration. This unique blend of Turmeric root extract, Cat's claw bark extract, Ginger root extract, Bitter Orange fruit extract, Peppermint among others support reduction in abnormal cell growth, detoxification and immune support. Research has demonstrated Graviola may induce cytotoxicity in affected cells in part by inhibiting cellular respiration in the mitochondria; this supports the body's natural ability of apoptosis to regulate unhealthy cell growth.\*

**Ingredients:** Graviola, Camu Camu, Bloodroot, Omega Complex (derived from Ahi-flower), Astragalus, Sangre de Drago, Kakadu, NANx (Complex Emulsifying Essential Oil: Coconut, Oregano, Cinnamon, Neem, Mint Cedar, Lemongrass, Glove, Citronella, Kelp, Chrysanthemum & Garlic extract.)

**Suggested dosage:** 2 capsule daily or as directed by a healthcare professional.



## GI PRO

Content: **60 cap** Type: **GI Support**

**Suggested use:** GI Support, Enzymes, Immune, Digestion, Improves absorption of nutrients

**Benefits:** GI PRO™ is a unique combination of the most robust and effective probiotic NON-YEAST strains on the market. Our 4 Super Strains survive the tough 2.0 pH of your stomach and can endure up to 180-degree heat. Coupled with L-Glutamine an essential Amino Acid used for biosynthesis of proteins and a powerful herbal blend to enhance your immune system. These primary strains and unique blend are exactly what the body needs to rebuild the gastrointestinal tracts microbial ecosystem without introducing additional foreign bacteria.\*

**Ingredients:** Proprietary Shelf Stable (NON-YEAST) Probiotic Blend 2 Billion CFU, Bacillus subtilis, Bacillus coagulans, Bacillus clausii, PA-5051, Pediococcus acidilactici Fructo-oligosaccharides, Amylases, Protease (I, II, III), Lipase, Lactase, Xylanase, Beta-Glucanase, Pectinase, Phytase, Cellulase, Diastase, Glucoamylase, Invertase, Bromelain, Papain, Serrapeptase, Alpha Galactosidase, L-Glutamine, Betaine (Trimethyl glycine) HCL, Turmeric Root Extract, Cat's Claw (Uncaria tomentosa), Ginger Root Extract, Peppermint Leaf Extract, Bitter Orange Fruit Extract, Slippery Elm (bark), Star Anise (seed), Boldo (Leaf)

**Suggested dosage:** 2 capsule with meals daily or as directed by a healthcare professional.



## HYDROMIN

Content: **2 oz** Type: **Hydration**

**Suggested use:** Cellular Hydration, Minerals, Vitamins

**Benefits:** HYDROMIN is an advanced electrolyte supplement that contains over 90 different micronutrients. HYDROMIN promotes healthy cell activity, cell hydration, vitamin and mineral balance.\*

**Ingredients:** Vitamins B1, B3, B5, B6, B12 as Methylcobalamin, C, Calcium, Sodium, Magnesium, Selenium, Taurine, Camu Camu, and Deep Sea Mineral Complex with 80+ Micro Nutrients

**Suggested dosage:** 10 drops in any liquid daily or as directed by a healthcare professional.



## H951x

Content: **100 cap**    Type: **Immune System**

**Suggested use:** Anti-Inflammatory, Hormone Balance, Menopause, Cellular Support, GI Health, Skin

**Benefits:** H951x is a complex compound and micronutrients and metabolites have been shown to have different biological properties, such as anti-viral, antibacterial, anti-inflammatory, anti-mutagenic and anti-carcinogenic activities. Also, may support hormone modulation.\*

**Ingredients:** Advanced Concentrate Blend of Fermented Hydrolyzed Isoflavone Soy Concentrate and NANx (Micronized Essential Oils: Oregano, Cinnamon, Mint & Neem)

**Suggested dosage:** 2 capsule daily or as directed by a healthcare professional.



## IRON

Content: **90 tab**    Type: **Blood Health**

**Suggested use:** Iron may support blood health and the body's natural processes related to growth and development.

**Benefits:** This product provides 25 mg of iron in a sublingual form, making it easier for the body to absorb. Iron is an essential mineral needed for the production of hemoglobin and myoglobin, which support oxygen transport throughout the body. It also plays a key role in hormone support and overall cell function.\*

**Ingredients:** Iron - 25 mg (139% DV) as Ferrous Fumarate, Stevia Leaf Extract - 2 mg

**Suggested dosage:** As a dietary supplement, take 1 Quick Dissolve tablet daily, or as directed by a healthcare professional.



## IMMUNx

Content: **90 tab**    Type: **Immune System**

**Suggested use:** Immune System, Antiparasitic, Antibacterial, Antiviral, Essential Oils, Tissue Repair, Antioxidant, Detoxification, Anti-Inflammatory, Energy

**Benefits:** IMMUNx is an advanced Essential Oil Blend of Botanicals Extracts and Essential Oils that boost the immune system and reduces oxidative stress. This blend has proven to have anti-parasitic, anti-bacterial, and anti-viral characteristics. Micronized, this unique blend is easy to absorb.\*

**Ingredients:** Blend of Herbal, Botanical Extracts in NANx suspension (Essential Oils) Sangre de Drago, Camu Camu, Coconut, Oregano, Cinnamon, Neem, Mint, Cedar, Geranium, Lemongrass, Clove, Citronella, Kelp extract, Chrysanthemum, Garlic extract, Uña de Gato, Suma, Ashwagandha

**Suggested dosage:** 2 capsules daily or as directed by a healthcare professional. Contents of capsule can be opened and taken without need for the capsule.



## INFORCEx

Content: **90 cap** Type: **Urinary Tract Health**

**Suggested use:** Urinary Tract, Prostate, Bladder, Immune System, Colon, Hormone, Anti-Inflammatory, Circulation

**Benefits:** INFORCEx is product helps to eliminate inflammation in the urinary tract along with the prostate. The minerals and fatty acids in this blend are used to help nourish cell membranes and maintain a healthy hormonal balance.\*

**Ingredients:** Saw palmetto, Stinging nettle, Pumpkin seed, Ashwagandha, Ahi-flower®, Maca root, Ginkgo biloba, Quercetin, Graminex® G60 & NAX (Secale cereal & Flower Pollen Extract)

**Suggested dosage:** 3 capsules daily or as directed by a healthcare professional.



## KPRO

Content: **30 tab** Type: **Blood Health**

**Suggested use:** K PRO may support bone health, cognitive health, and heart health by helping to prevent mineralization in arterial walls.

**Benefits:** K PRO contains a blend of Vitamin K1 and two forms of Vitamin K2 (menaquinone-4 and menaquinone-7). These vitamins may help support bone health, cardiovascular function, and cognitive health by contributing to the prevention of unwanted mineralization in the arteries.

**Active ingredients:** Vitamin K1 (phytonadione) - 500 mcg, Vitamin K2 (menaquinone-4) - 500 mcg, Vitamin K2 (menaquinone-7) - 50 mcg, for a total of 1,050 mcg

**Suggested dosage:** As a dietary supplement, take 1 Rapid Dissolve tablet daily, or as directed by a healthcare professional.



## K2/D3

Content: **30 cap** Type: **Blood Health**

**Suggested use:** K2/D3 may support blood health and contribute to overall bone development, heart health, and calcium absorption.

**Benefits:** This product combines Vitamin D3 (as cholecalciferol) and Vitamin K2 (as menaquinone-7) to help support bone development and increase calcium absorption. Additionally, it may help protect blood vessels from calcification and support heart health.\*

**Ingredients:** Vitamin D (as cholecalciferol) - 125 mcg (5,000 IU), Vitamin K (as menaquinone-7) - 100 mcg, Stevia Leaf Extract - 1 mg

**Suggested dosage:** As a dietary supplement, take 1 Rapid Dissolve capsule daily, or as directed by a healthcare professional.



## L THEANINE

Content: **100 tab** Type: **Antioxidant / Wellbeing**

**Suggested use:** L-Theanine may support gut health, promote relaxation, help with stress relief, and assist in reducing inflammation. It may also help with blood pressure regulation and improve overall sleep quality.

**Benefits:** L-Theanine is an amino acid commonly found in tea leaves, known for its potential to support stress relief, promote relaxation, and enhance mental focus. The Quick Dissolve delivery system bypasses the gut for better absorption, and L-Theanine may assist in boosting immunity by reducing inflammation. Additionally, it may support healthy blood pressure and improve sleep quality. As a powerful antioxidant, L-Theanine is also commonly used in ENOX2 therapy treatments to boost effectiveness.\*

**Ingredients:** L-Theanine - 200 mg, Stevia Leaf Extract - 2 mg

**Suggested dosage:** As a dietary supplement, take 1 Quick Dissolve tablet daily, or as directed by a healthcare professional.



## MULTIVITE

Content: **100 tab** Type: **General Health**

**Suggested use:** MULTIVITE may support metabolism and overall energy levels, providing a comprehensive nutritional foundation for general health.

**Benefits:** MULTIVITE provides essential vitamins and minerals that may support metabolism, energy production, and general wellness. It offers a broad spectrum of nutrients, including Vitamin A, Vitamin C, B vitamins, and biotin, which may help promote overall health and vitality.\*

**Ingredients:** Vitamin A - 1,500 mcg, Vitamin C - 60 mg, Vitamin D - 10 mcg, Thiamine - 1.5 mg, Riboflavin - 1.7 mg, Niacin - 20 mg, Vitamin B6 - 2 mg, Folate - 667 mcg, Biotin - 300 mcg, Pantothenic Acid - 10 mg

**Suggested dosage:** As a dietary supplement, take 1 Rapid Dissolve tablet daily, or as directed by a healthcare professional.



## NANOL

Content: **2 OZ** Type: **Immune System**

**Suggested use:** This blend is made to assist the immune system topically and internally.

**Benefits:** 2 oz spray - is an advanced blend of essential oils, herbals and lipid compounds that penetrate the skin to support surrounding tissue. Used topically, do not apply to open wound. Aids in detoxification, immune support, antioxidant support and healing. Orally may support immune and regenerative process

**Ingredients:** Coconut, Oregano, Cinnamon, Neem, Mint, Cedar, Geranium, Lemon-grass, Clove and more

**Suggested dosage:** 5 sprays 3x daily or as directed by healthcare professional.



## RESVERATROL

Content: **60 tab** Type: **Antioxidant Support**

**Suggested use:** Immune, Antioxidant, Anti-inflammatory

**Benefits:** This quick-dissolve antioxidant and anti-inflammatory polyphenol concentrate may support free radical damage and help in some age-related conditions. This unique delivery system bypasses the gut and improves levels of polyphenols, which may also support a strong immune system.

**Ingredients:** Resveratrol 100 mg (3, 5, 4'-trihydroxy-trans-stilbene), Licorice Root Powder 10 mg (Glycyrrhiza glabra), Stevia Leaf Extract

**Suggested dosage:** 1-3 tablets daily or as directed by a healthcare professional.



## PH PRO

Content: **1 item** Type: **Alkalinity**

**Suggested use:** Put in water for 5 min use continually or as directed till desired alkalinity is achieved.

**Benefits:** pH Pro portable ionizer increases alkalinity in the water as high as 9.6. This alkaline rich hydrogen stick promotes a healthy pH balance in the body treating over 1000 bottles of water.

**Ingredients:** portable ionizer hydrogen stick

**Suggested dosage:** 1x daily



## PHOSPRO

Content: **2.0 oz** Type: **General Health**

**Suggested use:** Chelation, Phosphorus Levels, Kidney Stones, Gall Stone, Brain, Circulation, Cellular Health.

**Benefits:** PHOS PRO is an Advanced Blend of nutrients designed to support proper phosphorus levels in the body which can aid in circulation and supports decalcification. This supplement should be added to water. The body needs phosphorus for growth, maintenance and repair of all tissues and cells.\*

**Ingredients:** Magnesium, Orthophosphoric acid, Inositol, Choline Bitartrate, Hydrangea Extract, Apple Cider Vinegar (organic)

**Suggested dosage:** 20 drops in water or juice daily or as directed by a healthcare professional. Rinse mouth with water when done.



## PRX OIL

Content: **10 ml** Type: **Pain Relief**

**Suggested use:** Pain Relief, Bites, Skin Injuries, Sprains, Swelling, Joint Pain, Ligaments, Bone

**Benefits:** PRX OIL (Pain Relief Xtream) s proprietary essential oil blend is used topically as a roll-on product. PRX is designed to reduce inflammation and support healing of soft tissue injuries, or skin issues. Topical relief only.

**Ingredients:** Ginger 5 gm, Sesame Oil 7.5 ml, Gaultheria Oil 2.5 ml, PEA (Organic Orange Citrus Derived), Eucalyptus 2 cl.

**Suggested dosage:** Apply liberally to affected area as needed or as directed by a healthcare professional.



## SANGREx

Content: **1 oz** Type: **Immune System**

**Suggested use:** Wound Healing, Immune Health, Blood Health, Clotting, GI Health, Soft Tissue and Skin, Cardiovascular Health

**Benefits:** PHOS PRO is a proprietary concentrate of Sangre de Drago. Known to be an immune booster and have antiviral and wound healing effects and may also protect against other infections. May be used topically to aid in wound healing or other skin issues such as rashes, bites, fungi or dermatitis.\*

**Ingredients:** Proprietary blend of Dragon's blood (Sangre de Drago), Uña de Gato, Suma, Ashwagandha, Oregano, Cinnamon, Neem, Mint, Coconut, Cedar, Geranium, Lemongrass, Clove, Citronella, Processed kelp, Chrysanthemum, Garlic extract, Guar gum, Sandalwood oil

**Suggested dosage:** 20 drops daily or as directed by a healthcare professional. Maybe used topically as needed.



## SBPRO

Content: **90 cap**    Type: **Blood Sugar**

**Suggested use:** Stimulates Metabolism, Lowers Blood Sugar, Antioxidant, High in Amino Acids, Cell Function, Nerve and Nerve Signaling, Liver, Adrenals

**Benefits:** SB PRO is powerful blend of vitamins, minerals, and botanical extracts is designed to support healthy blood sugar levels, enhance metabolic function, and promote overall vitality. Chromium and vanadium play key roles in glucose metabolism, improving insulin sensitivity and helping maintain stable blood sugar levels. Alpha-lipoic acid and biotin work synergistically to enhance cellular energy production and combat oxidative stress. Gymnema, banaba leaf, bitter melon, and fenugreek have been traditionally used to support glucose regulation by promoting insulin function and reducing sugar absorption. The addition of adaptogenic herbs like ginseng, astragalus, and rehmannia glutinosa helps combat stress-related metabolic imbalances, while turmeric and berberine provide potent anti-inflammatory and antioxidant benefits. RosaEx and Verbasnol contribute to vascular health and microcirculation, further supporting metabolic wellness. With the inclusion of key mushrooms, cayenne, and licorice, this comprehensive formula helps optimize digestion, support liver function, and balance energy levels for overall metabolic harmony.\*

**Ingredients:** Vitamin C (ascorbic acid) Vitamin E (d-alpha tocopheryl succinate as 15 IU) Biotin, Magnesium (as magnesium oxide), Zinc (as zinc picolinate), Manganese (as manganese amino acid chelate), Chromium (as chromium amino acid chelate), Choline (as bitartrate) Vanadium (as vanadyl sulfate) Alpha Lipoic Acid, RosaEx<sup>®</sup> (Rosa Roxburghii fruit extract), Verbasnol<sup>®</sup> (Rehmannia glutinosa extract). Proprietary Blend Gymnema Leaf Extract, Guggul Extract, Fenugreek, Bitter Melon Extract, Cassia Bark Extract, King Trumpet Mushroom, Banaba Leaf Extract, Juniper Berry Extract, Bilberry Fruit Extract, Cayenne Extract, Poria Mushroom Extract, Licorice Root Extract, Yarrow Herb (aerial parts), Agrimony (aerial parts), Turmeric Root Extract, L-Taurine, Berberine, Astragalus, Ginseng

**Suggested dosage:** 2 capsules daily or as directed by a healthcare professional.



## SELENIUM

Content: **60 tab**    Type: **Brain Health, Thyroid**

**Suggested use:** Selenium may support metabolism, brain function, and overall skin and nail health while offering antioxidant benefits.

**Benefits:** Selenium is a powerful antioxidant that may help support metabolism, brain function, and the health of skin and nails. The advanced Quick Dissolve tablet bypasses the gut for quicker absorption and utilization. Selenium may also support vital organs and contribute to immune system health.\*

**Ingredients:** Selenium - 200 mcg (364% DV) as Selenomethionine

**Suggested dosage:** As a dietary supplement, take 1 Quick Dissolve tablet daily, or as directed by a healthcare professional.



## SLKPRO

Content: **90 cap** Type: **Spleen, liver and kidney**

**Suggested use:** Spleen, Liver, Kidney, Drainage, Detox, Immune, Gallbladder, Lymphatics, GI & Digestion, Anti-inflammatory, Blood.

**Benefits:** SLK PRO is a unique blend of botanicals suspended in a concentrate emulsifier for quick absorption. These nutrients have a history of supporting the spleen, liver, and kidneys while boosting the body's ability to detox.\*

**Ingredients:** Cat's claw (bark), Jurubeba (leaf), Dandelion (root), Uva-Ursi (leaf), Boldo (leaf), Artichoke (leaf), Hydrangea (root), Oregon grape (root), Phyllanthus (aerial parts), Fringe tree (root bark), Marshmallow (root), Stinging nettle (leaf), European goldenrod (aerial parts), Milk thistle (seed), Yellow dock (root), Hawthorn (fruit, leaf, flower), Blue flag (root), Yarrow (aerial parts), Agrimony (aerial parts), Oat straw (aerial part), Meadowsweet (aerial parts)

**Suggested dosage:** 2 capsules daily or as directed by a healthcare professional.



## SNSPRO

Content: **1 oz** Type: **Immune Health**

**Suggested use:** SNS PRO - sinus spray - is an Advanced Micro Blend of nutrients designed to support the sinus's, and improve the mucus membrane health.

**Benefits:** Supports sinus health, Improves Mucus Membrane Health, Fights Infections Naturally, Reduces Inflammation, Immune System Boost, Non-Invasive and Easy to Use

**Ingredients:** Proprietary Blend of Herbal, Glandular & Nutrient essences: Ammonium Carbonate, Anemone Pulsatilla, Arnica Montana, Barberry, Cherry plum, Choline Chloride, Clematis, Club Moss, Echinacea, Goldenseal, Horseradish, Impatiens, Lomatium Dissectum, Luffa fruit, Manganese, Myrrh resin, Onion, Pau D'Arco, Propolis, Rock Rose, Sabadilla off, Star of Bethlehem, St John's wort, Sus &/or Bovine essences of: Adrenal, Lung, Lymph node, Mucosa, Peyer's Patches, Spleen, Thymus, Oils of Cinnamon, Coriander,Neem, Oregano, Parsley, Scotch Pine

**Suggested dosage:** 1 spray up each nostril. Use 2-3 times daily as needed.



## VITAMIN C

Content: **90 tab** Type: **Immune Health**

**Suggested use:** Vitamin C may support immune health, as well as contribute to body system development and repair.

**Benefits:** Vitamin C is a powerful antioxidant that may help support immune system function and enhance the body's ability to absorb collagen and iron. The Quick Dissolve delivery system bypasses the gut for more efficient absorption, helping to improve Vitamin C levels. It may also contribute to the overall health and repair of body systems and structures.\*

**Ingredients:** Vitamin C - 500 mg, Sodium - 23 mg, Stevia Leaf Extract - 5 mg

**Suggested dosage:** As a dietary supplement, take 1 Quick Dissolve tablet daily, or as directed by a healthcare professional.



## VMAX (NEW FORMULA)

Content: **30 scoops** Type: **Cardiovascular & Brain**

**Suggested use:** Cardiovascular, Brain, Cognition & Memory, Circulation, Skin, Blood Sugar, Stamina, Libido, Vision, Immune, Energy, Heart, Blood Pressure and Blood Flow, Hydration, O2 Levels, Collagen, Joints, Mitochondria

**Benefits:** V MAX is a powerful blend of amino acids, vitamins, minerals, and whole food extracts designed to promote the production of Nitric Oxide. Nitric Oxide plays a key role in the health of the cardiovascular system. This powder can also be used to help other supplements absorb better into the body. V Max may assist with energy, athletics, antioxidant protection, overall nutritional uptake, blood flow.\*

**Ingredients:** Vitamin C , Vitamin B12 (Methylcobalamin), Vitamin E, Vitamin K2, Biotin, Nitric Oxide Support Blend: Nitrosigine® (Inositol-Stabilized Arginine Silicate), L-Citrulline, Lecithin Sunflower, Watermelon, Pomegranate Juice, Beet Powder, Berry Blend: Grapeseed/Grape Skin Extract, Camu Camu, Blackberry Juice Powder, Raspberry Juice Powder, Botanical Endothelium Recovery: Hawthorn Berry, Horse Chestnut, Green Coffee Bean Extract, Indian Gooseberry, Saw Palmetto, Sodium Hyaluronate, Astrion®, AlphaGPC®, Deep Ocean Trace Mineral Blend, Phosphatidylcholine, Co-Enzyme Q10, Omega Complex (Ahiflower®), AstraGin®

**Suggested dosage:** Take 1 scoop daily prior to meals, in 8 oz. of water or as directed by a health care provider.



## ZMAX

Content: **90 tab** Type: **Immune Support, Iron**

**Suggested use:** Z MAX may support heart health, help with viral immune reactions, and contribute to reducing inflammation.

**Benefits:** Z MAX combines Zinc, Vitamins C and D, and Elderberry extract, which may help support the immune system. The Quick Dissolve delivery system bypasses the gut for better absorption and improved levels of these nutrients. Packed with antioxidants, ZMAX may contribute to overall immune health and wellness.\*

**Ingredients:** Vitamin C - 30 mg, Zinc - 5 mg, Vitamin D - 25 mcg, Elderberry Extract 10:1 - 50 mg, Stevia Leaf Extract - 2 mg

**Suggested dosage:** As a dietary supplement, take 1 Quick Dissolve tablet daily, or as directed by a healthcare professional.

# Micro Blends

## OVERVIEW

Alive Innovations Micro Blends are advanced mixtures of herbs, minerals, nutrients, and essences designed to support different functions of the body. Each Micro Blend is carefully constructed into a liquid for easy ingestion and digestion. **Suggested use on select Micro Blends are emotional support, detox cleansing or hormone balancing.** Micro Blends should be taken 30 minutes before or after food.



## ALRGYPRO

Content: **1.7 oz**      Type: **Allergies**

**Suggested use:** Allergies

**Benefits:** ALRGY PRO™ is an Advanced Micro Blend of nutrients designed to aid in relief of symptoms & emotions from general reactions, allergies or healing crises.

**Ingredients:** Choline chloride, Manganese, Ammonium carbonate, Sea salt, Luffa fruit, Sus glandular essences of Adrenal, Lung, Mucosa, Peyers Patches, Thymus. Flower essences of: Cherry-Plum, Clematis, Impatiens, Rock Rose, Onion (whole plant), Star-of-Bethlehem.

**MOXIE (energy frequency):** Acetyl, Adrenaline, Apis, Arsenic album, Histamine, Inf y, IL-12, Luffa, Sabadilla, Serotonin

**Suggested dosage:** 3 sprays 3x daily or as directed by healthcare professional.



## BODYRGN

Content: **1.7 oz**      Type: **Brain Health**

**Suggested use:** Brain and Adrenal Health

**Benefits:** Advanced Micro Blend. Supports the energetic and nutritive foundations for health and brain activity. Reduce emotional scarring due to injury. Helps build strong muscles and tendons.

**Ingredients:** Ankle Articulation, Articulation Capsule, Solar Plex, Frontal Lobe, Hip Articulation, Hippocampus, Hypothalamus, Muscle, Nerve, Spinal Cord, Sympathetic trunk.

**MOXIE (energy frequency):** AIL-1, BDNF, Beta Endorphine, bFGF, Calcitonin, IGF, IL-10, TGF.

**Suggested dosage:** 3 sprays 3x daily or as directed by healthcare professional.



## FMLPRO

Content: **1.7 oz**      Type: **Hormonal Balance**

**Suggested use:** Hormonal balance, energy boost, better sleep, lower mood swings.

**Benefits:** FML PRO™ is an Advanced Micro Blend of nutrients designed as a female balancing adaptogenic formula supporting both glandular and hormonal components.

**Ingredients:** Suis tissues of Adrenal, Corpus Luteum, Hypothalamus, Ovary, Pancreas, Pineal Gland, Pituitary, Thalamus Gland, Thymus & Thyroid; with micro dose of cholesterol & melatonin.

**MOXIE (energy frequency):** Cholesterol, estrogen, melatonin, progesterone.

**Suggested dosage:** 3 sprays 3x daily or as directed by healthcare professional.



## FNGSDX

Content: **1.7 oz**      Type: **Fungal Detox**

**Suggested use:** Detox support

**Benefits:** DFNGS DX is an Advanced Micro Blend of Berberis, Cochlearia armor, Echinacea, Hydrastis, Lapacho and more designed to aid in relief and detox of symptoms or exposure to mold or fungus.

**Ingredients:** Iron, Zinc, Selenium, Whole plants of Anemone Pulsatilla, Barberry, Club Moss Parsley, Echinacea, Goldenseal, Pau D'Arco; Horseradish root, Lomatium, Myrrh resin, Propolis, trace Iridium, Thymus (Sus &/or Bovine).

**MOXIE (energy frequency):** cochlearia armor, Lycopodium, Phosphoric acid.

**Suggested dosage:** 3 sprays 3x daily or as directed by healthcare professional.



## GIDX

Content: **1.7 oz** Type: **Gut Health**

**Suggested use:** Better digestion, less bloat, healthy gut.

**Benefits:** GI DX™ is an Advanced Micro Blend of nutrients designed to support a healthy GI tract/bowel function and elimination, constipation & leaky gut, TH1-TH2 balancing Payers, Patches repair.

**Ingredients:** Pantothenic Acid, Potassium (carbonate), Sodium (carbonate), Vitamins B1, Vitamin D, Aloe (whole plant), Bryonia (root), Cascara (whole plant), Chelidonium Majus (whole plant), Dandelion (whole plant), Milk Thistle (seed), Rhubarb (rhizome), Stone root (rhizome & roots), Niacin, ; Sus scrofa essences of: colon, Peyer's patches & rectum

**MOXIE (energy frequency):** Alumina, il-12, inf-y, Scatolum, Serotonin.

**Suggested dosage:** 3 sprays 3x daily or as directed by healthcare professional.



## IMMU-PRO

Content: **1.7 oz** Type: **Immune System**

**Suggested use :** Supports immune system, regeneration as well as modulation and balance of immune function. Natural Immune boost.

**Benefits:** IMMU PRO™ is an Advanced Micro Blend of nutrients designed to support regeneration and immune modulator re-population. Improves immune response naturally.

**Ingredients:** Ascorbic Acid essence, Adrenal, Bone Marrow, Lymph Node, Peyer's Patches, Spleen, Thymus, Bovine &/or Sus

**MOXIE (energy frequency):** GCSF, IL-2, Inf-y

**Suggested dosage:** 3 sprays 3x daily or as directed by healthcare professional.



## INF B DX

Content: **1.7 oz** Type: **Bacterial Detox**

**Suggested use:** Immune Support

**Benefits:** INF B DX is an Advanced Micro Blend of Arnica, Belladonna, Colloidal Iridium, Ferrum Metallicum and more. Designed to support and enhance the body's immune system response under bacterial conditions. This micro blend offers a detox of bacterial influences in the body.

**Ingredients:** Colloidal trace amounts of Iridium, Iron, Phosphorous & Zinc, Arnica Montana, Echinacea, Golden Seal, Horse Radish, Lomatium Dissectum, St. Johns wort, Tecoma. Essences of Sus Scrofa &/or Bovine, Adrenal, Lymph Node, Spleen and Thymus

**MOXIE (energy frequency):** Belladonna, Cochleria, Tecoma

**Suggested dosage:** 3 sprays 3x daily or as directed by healthcare professional.



## INFL DX

Content: **1.7 oz** Type: **Inflammation**

**Suggested use:** Support Bone and joints

**Benefits:** INFL DX™ is an Advanced Micro Blend of nutrients and organ tissue essences that may support the bodies inflammatory response. Key Ingredients: Bryonia (root), Monkshood (whole plant), Citric acid, sus scrofa essences of: Adrenal, Connective tissues, Pineal, and Solar Plex. INFL DX may be used to relieve muscle and joint pain, but also excess inflammation throughout the body.

**Ingredients:** Sodium (pyruvate), Bryonia (root), Monkshood (whole plant), Citric acid, sus scrofa essences of: Adrenal, Connective tissues, Pineal, Pituitary, Solar Plex.

**MOXIE (energy frequency):** Aconite, AIL-1, apis/bee, Belladonna, Beta Endorphine, Bryonia, Citric Acid, IL-10, TGF

**Suggested dosage:** 3 sprays 3x daily or as directed by healthcare professional.



## INF V DX

Content: 1.7 oz Type: Viral Detox

**Suggested use:** Immune Support

**Benefits:** INF V DX™ is an Advanced Micro Blend of nutrients designed to support and enhance the body's immune system response under viral conditions. This Micro blend offers a detox of viral influences in the body.

**Ingredients:** Phosphorus, Selenium, Zinc, Iodine, Echinacea (whole plant), Boneset (aerial flowering parts), Gelsemium (whole plant), Goldenseal (whole plant), Clubmoss (whole plant), Watercress (whole plant), Phosphoric acid, Thymus (suis).

**MOXIE (energy frequency):** Phosphoric acid, Belladonna, Lachesis, Nux vomica, Pyrogenium.

**Suggested dosage:** 3 sprays 3x daily or as directed by healthcare professional.



## KDNVPRO

Content: 1.7 oz Type: Kidney Support

**Suggested use:** Kidney Support

**Benefits:** Supports kidney and bladder and urinary tract drainage, detox, inflammation, general nutrition and water retention, vital energy for organ along with support for GI and reduction of urea/creatinine load. May also support Arrhythmia, edema due to weak heart, palpitations along other heart-related issues.

**Active Ingredients:** Angelica, Astragalus, Curcumin, Lespedeza, Rheun (7.5 ml), Nigella, Salvia met (5 ml), Red Suma (2.5 ml).

**Suggested dosage:** 3 sprays 3x daily or as directed by healthcare professional.



## LVRPRO

Content: 1.7 oz Type: Liver Support

**Suggested use:** Healthier skin and hair, Hormonal balancing, Decreased sinus and allergy issues, slowed aging, potentially fewer aches and pains

**Benefits:** LVR PRO™ is an Advanced Micro Blend of nutrients designed to support Liver health, drainage and detox cleansing and regeneration.

**Ingredients:** Carduus Benedictus, Carduus Marianus, Chelidonium, Choline, Duodenum, Fummaric Ac., Gall Bladder, Inositol, Lycopodium, Natrium Oxa., Natrium pyr., Niacin, Taraxicum, Vein, B1, B2, B6, Vitamin B12 Methycobalmin (30K), Ceanothus Am., Chionanthus vir. (6X), Coeliac Plexus, Pancrease (8X, 200K), IL 4 (10X, 200K), Kalium sulf, Natrium sulph. (6X, 30K), Liver, Spleen (6X, 200K).

**MOXIE (energy frequency):** Fumaric acid, IL-4, Sodium oxalate, Potassium sulfate,

**Suggested dosage:** 3 sprays 3x daily or as directed by healthcare professional.



## LYMPHDX

Content: 1.7 oz Type: Lymphatic Support

**Suggested use:** Lymphatic support, drainage, detox.

**Benefits:** LYMPH DX™ is an Advanced Micro Blend of nutrients designed to support a healthy lymphatic system. This blend will encourage drainage and detox while supporting healthy lymphatic tissue.

**Ingredients:** Whole plants of Fumaria Off, Scotch Pine, Black Pepper & Tilia Tomentosa; Potassium Carbonate, Blackthorn buds, essence of sus scrofa Lymph Node & Spleen; Silicea essence.

**MOXIE (energy frequency):** Ethyl alcohol, Hepar sulph calc, Sulfuric acid.

**Suggested dosage:** 3 sprays 3x daily or as directed by healthcare professional.

# METABOLISM

## THE TRUTH ABOUT METABOLISM

There are a lot of myths related to the impact metabolism has on your health, especially in terms of weight loss. In simple terms, metabolism is the internal process by which your body expends energy and burns calories. It runs 24/7 to keep your body moving, even when you're resting or sleeping, by converting the food and nutrients you consume into the energy your body needs in order to breathe, circulate blood, grow and repair cells, and everything else it does to survive.

META PRO is an innovative blend of plants, minerals, and key nutrients to support and enhance metabolic function and lipid metabolism. This exclusive formula has harnessed the benefits of natural ingredients shown to support energy production, thermogenesis, and overall homeostasis.



MADE IN USA





# REVOLUTIONARY FORMULA

META PRO has been shown to provide the following benefits

- Enhances metabolic function
- Improves glucose metabolism
- Stimulates lipid metabolism
- Supports energy production





## METAPRO

Content: **1.7 oz** Type: **Metabolism**

**Suggested use:** Metabolism, energy

**Benefits:** META PRO™ is an Advanced Micro Blend of nutrients designed to support metabolism, energy production, healthy homeostasis, thermal regulation and nutrient storage.

**Ingredients:** Artery (sus scrofa), ATP (adenosine triphosphate), Centella Asiatica (whole plant), Citric Acid, Colchicum Autumnale (bulb), Iron (Fumarate), Fumaric Acid, IGF, Potassium (aspartate), L-Carnatine, Lactic Acid, Lipase, Liver (sus scrofa), Lymph node (sus scrofa), Sodium (oxalate & pyruvate) Pituitary (sus scrofa), Succinic Acid, Thyroid (sus scrofa), Vein (sus scrofa), Yohimbe bark extract.

**MOXIE (energy frequency):** cAMP, Colchicum, Igf, il-10, insulin, Mamordica, Quinhydrone, Thyrodium

**Suggested dosage:** 3 sprays 3x daily or as directed by healthcare professional.



## MITOPRO

Content: **1.7 oz** Type: **Cellular Health**

**Suggested use:** Mitochondrial function such as cell growth, movement, and homeostasis

**Benefits:** MITO PRO™ is an Advanced Micro Blend of nutrients that may stimulate and support oxidative phosphorylation. Mitochondria generate the majority of adenosine triphosphate (ATP), the energy currency of the cell. This supplement can be used to support the oxidation (aging process) and positively affect the energy of the cells.

**Ingredients:** Calcium chloride, Copper (sulfate), Iron (citrate), Magnesium phosphate, Manganese phosphate, Sodium (oxalate, pyruvate), Niacinamide, Potassium oxalate, Selenium, BComplex (B1, B2, B6), Zinc Alpha lipoic acid, Citric acid, Colchicum autumnale, Conium maculatum, Fumaric acid, Lactic acid, Podophyllum, RNA, Succinic acid, Sulfur

**MOXIE (energy frequency):** cAMP, Colchicum, merc sol, Methyglyoxal, Quinhydrone.

**Suggested dosage:** 3 sprays 3x daily or as directed by healthcare professional.



## MLPRO

Content: **1.7 oz** Type: **Hormonal Balance**

**Suggested use:** Improves sexual development and reproductive function, energy boost, better sleep.

**Benefits:** ML PRO is a unique adaptogenic blend of nutrients, glandular and hormone components that are designed to support balancing male hormones, organs, and glands, aiding peak male performance.

**Ingredients:** Adrenal gland, cAMP, Cholesterol, DHEA, Pancreas, Pineal, Pituitary, Prostate, Testis, Testosterone, Thalamus (6X, 200K), Aldosterone, Androsterone (15X, 200K), Growth hormone, Melatonin, (4C, 200K), Hypothalamus (8X, 200K), Thy-mus (6C, 200K), Thyroid gland (200K).

**MOXIE (energy frequency):** Aldosterone, Androsterone, Growth hormone, Testosterone

**Suggested dosage:** 3 sprays 3x daily or as directed by healthcare professional.



## NEUROPRO

Content: **1.7 oz**      Type: **Neurological**

**Suggested use:** Neuro support for Neuro Pathways and brain function

**Benefits:** NEURO PRO is a blend of nutrients designed as Autonomic (Full spectrum) neurotransmitter support and adaptogenic action that provides core regenerative nutrient support for neuro pathways.

**Ingredients:** 5-HTP, Choline (as Choline Chloride), Glutamic acid, Glycine, Histidine, L-Dopa, Melanin, Melatonin, Norepinephrine, Octopamine, Phenylalanine, Taurine, Tryptophan, Tyrosine.

**MOXIE (energy frequency):** Acetylcholinesterase, acc, Dopa, l-dopa, Malvin, Nitric oxide, Norepinephrine, o-methyl, Octopamine, Serotonin,

**Suggested dosage:** 3 sprays 3x daily or as directed by healthcare professional.



## NRVS PRO

Content: **1.7 oz**      Type: **Nervous System**

**Suggested use:** Boost immune system, brain health and function, better digestion, improve circulation.

**Benefits:** NRVS PRO™ is an Advanced Micro Blend of nutrients designed to support balancing of the Central Nervous System & Autonomic Nervous System along with Adrenal, Ig, Neurological and Mental clarity supporting both glandular and neurological systems.

**Ingredients:** Choline chloride, Adrenaline, GABA, Histamine, Norepinephrine, Tyramine (6X, 200K), Hydrastis (3X), Taraxacum (3X, 30K),

**MOXIE (energy frequency):** Adrenaline, Acc, Histamine, Norepinephrine

**Suggested dosage:** 3 sprays 3x daily or as directed by healthcare professional.



## PARADx

Content: **1.7 oz**      Type: **Parasite Detox**

**Suggested use:** Parasites

**Benefits:** PARA DX™ is an Advanced Micro Blend of nutrients designed to support elimination of parasitic issues. This may assist in proper nutrient absorption.

**Ingredients:** Black walnut hull, oregano extract, wormwood powder, neem leaf powder, thyme leaf, clove, pumpkin seed, garlic, fennel seed, pancreatin, L-lysine, ox bile, pepsin, cellulase, bromelain

**MOXIE (energy frequency):** NONE

**Suggested dosage:** 3 sprays 3x daily or as directed by healthcare professional.



## RENALPRO

Content: **1.7 oz**      Type: **Renal Health**

**Suggested use:** Designed to support increase in circulation, reduce inflammation, improve immune response to bacteria, fungus and viral loads.

**Benefits:** RENAL PRO is an Advanced Micro Blend of nutrients designed to support increase in circulation, reduce inflammation, improve immune response to bacteria, fungus and viral loads while supporting the body's natural elimination process. May also support mental function, heart, liver, bladder, pancreas and GI system and general homeostasis and repair.

**Ingredients:** Angelica Archangelica L. (Root and Rhizome), Astragalus Membranaceus (Whole Plant), Cinnamomum Verum (Whole Plant), Curcumin (Rhizome), Lespedeza Capitata (Whole Plant), Nigella Sativa (Whole Plant), Orthosiphon Aristatus (Whole Plant), Rhus Glabra (Whole Plant), Rheum Officinale (Whole Plant), Salvia Officinale (Whole Plant).

**Suggested dosage:** 3 sprays 3x daily or as directed by healthcare professional.



## RLFPRO

Content: **1.7 oz**      Type: **Emotional Support**

**Suggested use:** RLF PRO™ is an Advanced Micro Blend of nutrients designed to aid in relief of symptoms & emotions from general reactions, allergies or healing crises.

**Benefits:** Emotional support, energy boost, calmness, improves focus.

**Ingredients:** Choline (as Choline Chloride), Cherry plum (Flower and stem), Clematis (Flower and stem), Impatiens (Flower and stem), Rockrose (Flower and stem) & Star-of-Bethlehem (Whole plant).

**MOXIE (energy frequency):** Histamine, Serotonin, il-12, Inf-y

**Suggested dosage:** 3 sprays 3x daily or as directed by healthcare professional.



## SLPEZ

Content: **1.7 oz**      Type: **Sleep support**

**Suggested use:** SLP EZ is an Advanced Micro Blend of nutrients designed to support deep restful sleep cycle and natural mental calm and balance.

**Benefits:** Support deep restful sleep cycle, natural mental calm and balance.

**Ingredients:** Chamomile (Whole Plant), Christmas Rose (Root), Lemon Balm (Whole Plant), Melatonin, Oat (Whole Plant), Phosphorus Colloidal, Pineal Gland (Sus Scrofa &/or Bovine), Pulsatilla (Whole Plant), Serotonin, Valeriana Officinale (Whole Plant).

**MOXIE (energy frequency):** Serotonin.

**Suggested dosage:** 3 sprays 3x daily or as directed by healthcare professional.



## SKNPRO

Content: 1.7 oz Type: Skin repair

**Suggested use:** Designed to support the skin and tissue repair. May provide relief to skin challenges.

**Benefits:** SKN PRO is an Advanced Micro Blend of nutrients designed to support skin and tissue repair. May provide temporary relief to skin challenges. May be applied topically to affected area for additionally relief or repair.

**Ingredients:** Calcium (calcium Gluconate), Centella Asiatica (Whole Plant), Collagen (Sus scrofa), Skin (Sus scrofa &/or Bovine), Placenta (Sus Scrofa &/or Bovine), Hyaluronidase.

**MOXIE (energy frequency):** bFGF, Hyaluronidase, IGF,

**Suggested dosage:** 3 sprays 3x daily or as directed by healthcare professional.



## SYS DX

Content: 1.7 oz Type: Detoxification

**Suggested use:** Detoxification, Hormone Balance

**Benefits:** SYS DX is an Advanced Micro Blend of herbals, glandular components, minerals, and vitamins designed to support detox and drainage of all major body systems and pathways.

**Ingredients:** Alpha Ketoglutaric Acid, Alpha Lipoic Acid, Ascorbic Acid, Berberis vulgaris (whole plant), Blessed Thistle (flowering tops), Club Moss, meadow saffron (bulb), Dandelion (whole plant), Milk Thistle (seed), Activated Charcoal, Gallium (asparine); with sus scrofa essences of Adrenal, Kidney, Liver, Lymph node, Connective tissue, Thymus, Thyroid & Tonsil.

**MOXIE (energy frequency):** Colchicum, II-4, Nux vomica,

**Suggested dosage:** 3 sprays 3x daily or as directed by healthcare professional.



## SYS PRO

Content: 1.7 oz Type: System Support

**Suggested use:** General Support, Cellular Detoxification, Mitochondrial support

**Benefits:** SYS PRO is an Advanced Micro Blend of herbals, glandular components, minerals, and vitamins designed to support connective tissue, peripheral nerves, circulatory and fat drainage, and detoxification pathways.

**Ingredients:** Ascorbic Acid (vitamin C), DHEA, Histidine, Malic Acid, NAD, & Tyrosine, Sea kelp, Thuja Occidentalis, Phenylalanine, Adrenal, Lymph node & connective tissue suis glandulars.

**MOXIE (energy frequency):** Bdnf, bFGF, Hyaluronidase, il-6, Lactic acid, Prolactine, Pyrogenium, Trichinoyl, Sodium oxalate/pyruvate/sulfate

**Suggested dosage:** 3 sprays 3x daily or as directed by healthcare professional.



## THYROPRO

Content: 1.7 oz Type: Thyroid Health

**Suggested use:** Thyroid, Metabolism

**Benefits:** THYRO PRO is an Advanced Micro Blend of herbals, glandular components, minerals, and vitamins designed to support thyroid rebalancing & regeneration with additional drainage and detox support.

**Ingredients:** Trace Iodine, Adrenal gland, Parathyroid, Pituitary, Spleen, Thymus, Thyroid (all sus scrofa &/or bovine), Kelp(whole), trace Iridium (colloidal)

**MOXIE (energy frequency):** Thyroxine (T4), Triiodothyronine (T3).

**Suggested dosage:** 3 sprays 3x daily or as directed by healthcare professional.



CUSTOM  
COMPLETE

# STOCK SUPPLEMENTS

Discover the power of personalized wellness with our CC Stock Supplements, crafted using our Custom Complete formulas. Tailored dosages and suggested uses ensure that each ingredient supports health.



## ADRENx

Content: **60 cap**    Type: **Adrenal Support**

**Suggested use:** Endocrine, Metabolism

**Benefits:** The adrenal glands control the regulation of most hormones. This formulation supports the endocrine system and helps to regulate metabolism. This complex of vitamins and herbs may help alleviate signs of adrenal fatigue.\*

**Ingredients:** Vitamin C (from Camu Camu Berry) 20mg, Pantothenic Acid (as Calcium Pantothenate) 50mg, Adrenal (of bovine source, not an extract) 250mg, Licorice (root) 50mg, Ginger (rhizome) 25mg, Kelp (entire plant) 25mg, Rhodiola 20mg

**Suggested dosage:** 2 capsules daily or as directed by a healthcare professional.



## CARDIpro

Content: **60 cap**    Type: **Heart Support**

**Suggested use:** Heart

**Benefits:** This blend was formulated to support heart function. By combining magnesium, L-carnitine, and L-aurine, this blend encourages comprehensive heart support by aiding in blood pressure regulation, nervous system support, heart failure management, oxidative stress reduction, and myocardial contractions.\*

**Ingredients:** Magnesium (from Magnesium Amino Acid Chelate) 126mg, Heart (of bovine source, not an extract) and Inulin (from Chicory), L-Carnitine 175mg, L-Taurine 87mg, Coenzyme Q10 21mg, Sumac 70mg

**Suggested dosage:** 2 capsules daily or as directed by healthcare professional.



## LIGx

Content: **60 cap**    Type: **Ligament Support**

**Suggested use:** Muscles, Connective Tissues

**Benefits:** This formula helps support muscles and connective tissue. By combining L-lysine, boron, and bromelain, this blend is ideal for improving stiffness, inflammation, arthritis, joint support, and soreness.\*

**Ingredients:** Calcium (as Lactate, Dicalcium Phosphate) 4mg, Phosphorus (as Dicalcium Phosphate) 29mg, Magnesium (as Citrate) 2mg, Manganese (as Sulfate) 11mg, Citrus Bioflavonoids 50mg, Pancreatin (8X) 12mg, L-Lysine 5mg, Ox Bile 5mg, Spleen (Bovine)\* 5mg, Thymus (Bovine)\* 5mg, Betaine HCl 2mg, Boron (as Amino Acid Chelate) 100mcg, Bromelain 600 GDU/mg 0.3mg

**Suggested dosage:** 2 capsules daily or as directed by healthcare professional.



## MOLDx

Content: **60 cap**    Type: **Mold Support**

**Suggested use:** Detox, Mold, Fungus

**Benefits:** This formulation is used for detoxification of different molds. Oregano, Chaga, Sage, and other ingredients are combined to produce a powerful antifungal, antibacterial, and anti-inflammatory effect against mold influence.\*

**Ingredients:** Wild Oregano Extract 200mg, Pau D'Arco (bark) 100mg, Chaga Mushroom 75mg, Sage Leaf 50mg, Mullein Leaf 50mg, Stinging Nettle 50mg, Ox Bile 25mg, Fulvic/Humic 35mg

**Suggested dosage:** 2 capsules daily or as directed by healthcare professional.



## PARAx

Content: **60 cap**    Type: **Parasite Support**

**Suggested use:** Detox, Parasite

**Benefits:** This formulation is intended to eliminate parasites from the body through detox. Ingredients like black walnut and wormwood are used to treat parasitic worm infections naturally.\*

**Ingredients:** Black Walnut (hull) 100mg, Pumpkin Powder (seed) 100mg, Wormwood Powder (aerial parts) 100mg, Hyssop Powder (aerial parts) 50mg, Thyme (leaf) 50mg, Pancreatin 31mg, L-Lysine 25mg, Ox Bile 25mg, Pepsin 17mg, Cellulase 2mg, Bromelain 84 MCU, Neem Leaf Powder 50mg

**Suggested dosage:** 2 capsules daily or as directed by healthcare professional.



## PROSTx

Content: **60 cap**    Type: **Prostate Support**

**Suggested use:** Prostate

**Benefits:** This formulation is beneficial to the prostate and male reproductive systems. With ingredients like chaga, boron, and betaine, it encourages anti-inflammation and proper function.\*

**Ingredients:** Magnesium (as Citrate) 3mg, Zinc (as Amino Acid Chelate) 15mg, Molybdenum (as Amino Acid Chelate) 50 mcg, Potassium (as Aspartate) 4mg, Boron (as Amino Acid Chelate) 250 mcg, Prostate (Bovine) 90mg\*, Juniper Berry 50mg, Chaga Mushroom 20mg, Betaine HCl 5mg, Saw Palmetto Berry 15mg

**Suggested dosage:** 2 capsules daily or as directed by healthcare professional.



## THYROx

Content: **60 cap**    Type: **Thyroid Support**

**Suggested use:** Thyroid, Adrenal Glands

**Benefits:** When thyroid support is abnormal, the body will call for thyroid support. By combining iodine and certain concentrates, they provide the necessary nutrients for proper thyroid function.\*

**Ingredients:** Iodine (from Kelp) 900mcg, Raw Bovine Thyroid Concentrate (Thyroxine free) 60mg, Porcine Adrenal Concentrate 30mg, Raw Bovine Pituitary Concentrate 10mg, Raw Porcine Spleen Concentrate 10mg, Kelp 180mg

**Suggested dosage:** 2 capsules daily or as directed by healthcare professional.

# Notes

[illegible]



CUSTOM  
COMPLETE

# FORMULA BASES

Our Custom Complete Builder is fully equipped with proprietary blends that act as ***formula bases*** for your customized supplement. These blends are formulated for specific problem areas and offers support for many body systems. Suggested use and dosage are different for each formulation.

## ADRENAL SUPPORT

**Benefits:** The Adrenal Glands control regulation of most hormones. This formulation supports the endocrine system and helps to regulate metabolism. This complex of vitamins and herbs may help to alleviate signs of Adrenal Fatigue.

**System supported:** Endocrine, Metabolism

**Active ingredients:** Vitamin C (from Camu Camu Berry) 20mg, Pantothenic Acid (as Calcium Pantothenate) 50mg, Adrenal (of bovine source, not an extract) 250mg, Licorice (root) 50mg, Ginger (rhizome) 25mg, Kelp (entire plant) 25mg, Rhodiola 20 mg

**Suggested dosage:** 1-3 x daily

**Similar to:** Adrena Plus

## BETA MAX

**Benefits:** This formulation helps to support the liver, gallbladder, and pancreas. Calcium and Phosphorus are used to help regulate multiple hepatic functions such as lipid and carbohydrate metabolism and proper liver functions.

**System supported:** Liver, Gallbladder, Pancreas

**Active ingredients:** Calcium (as dicalcium phosphate) 220 mg, Niacin (as niacinamide) 10mg, Phosphorus (as dicalcium phosphate) 164 mg, Choline Bitartrate 1664 mg, Inositol 160 mg, Betaine HCl 76 mg, Lecithin (soy) 76mg, Artichoke 50 mg, Dandelion (herb) 50 mg, Milk Thistle (seed) 50 mg, Turmeric (root) 50 mg, DL-Methionine 30 mg

**Suggested dosage:** 1-3 x daily

## C BOOST

**Benefits:** This blend contains vitamin C and bioflavonoids. Bioflavonoids may enhance the action and absorption of vitamin C. This combination is used for its antioxidant and anti-inflammatory properties. Camu Camu is added to help the body fight against viral infections.

**System supported:** Immune system

**Active ingredients:** Vitamin C (as Ascorbic Acid) 80 mg, Citrus bioflavonoid Complex 1100 mg, Camu Camu Berry extract 500 mg

**Suggested dosage:** 1-3 x daily

**Similar to:** Alpha Flavin

## CHAGA MIX

**Benefits:** Chaga mushrooms may be beneficial for lowering cholesterol levels, slowing cancer growth, supporting immune function, and reducing blood pressure.

**System supported:** Immune system

**Active ingredients:** Chaga mushroom 3600 mg

**Suggested dosage:** 1 daily

# ENDOCRINE SUPPORT

**Benefits:** This blend supports the endocrine system by combining pantothenic acid, manganese, and adrenal and pituitary sources. This combination helps your body to utilize vitamins, improve energy production and ensure proper liver function. Pantothenic acid supports the health and function of adrenal glands.

**System Supported:** Endocrine

**Active Ingredients:** Pantothenic Acid (as Ca Pantothenate) 4.5 mg, Zinc (as Amino Acid Chelate) 5.3 mg, Manganese (as Sulfate) 1.8 mg, Ovary & Adrenal Of a bovine source-not an extract, Goldenseal (leaf), Kelp (entire plant), Pituitary\*\*, Hypothalamus\*\*, Dulse, Yarrow Flower.

**Suggested dosage:** 1-3x daily

**Similar to:** Endo Glan Plus

# HEART SUPPORT

**Benefits:** This blend was formed to support the heart function. By combining magnesium, L-carnitine and L-taurine, this blend encourages massive heart support by aiding in blood pressure, nervous system, heart failure, oxidative stress, and myocardial contractions.

**System Supported:** Heart

**Active Ingredients:** Magnesium (from Magnesium Amino Acid Chelate) 126mg, Heart (of bovine source, not an extract) and Inulin, (from Chicory); L-Carnitine 175mg., L-Taurine 87mg, Coenzyme Q10 21mg, Sumac 70 mg

**Suggested dosage:** 1-3x daily

**Similar to:** Cardi Plus

# HISTAMINE SUPPORT

**Benefits:** This blend is important for the immune system when compromised by environmental or intrinsic factors. By combining calcium, iron, and vitamin Vitamin B12 Methycobalmin, they each help to stabilize the mast cell membranes, reduce erythema caused by a histamine reaction and assists in the releasing of the histamine reactions to support this function.

**System Supported:** Immune, Histadine control

**Active Ingredients:** Calcium (as dicalcium phosphate) 38mg, Iron (as Ferrous Fumarate) 1.95mg, Vitamin B12 Methycobalmin (as cyanocobalamin) 10mcg, Phosphorus (as dicalcium phosphate) 29mg, Chromium (as polynicotinate) 1 mcg, Liver (of bovine source, not an extract) 80mg, Bovine liver fat extract 40 mg

**Suggested dosage:** 1-3x daily

**Similar to:** Hista Plus

# IMMUNE-C

**Benefits:** This powerful formulation contains Graviola, vitamin C, Camu Camu berry, and Cats Claw. All these immune boosting ingredients are combined to offer great support to the immune system.

**System Supported:** Immune

**Active Ingredients:** Vitamin C (from Camu Camu) 8.4 mg, Soursop (leaf) (Graviola) 70 mg, Cats Claw (bark) 70 mg, Dragon's Blood Croton (sap) 70 mg, Astragalus (root) 70 mg, Camu Camu (berry) 70 mg

**Suggested dosage:** 1-3x daily

**Similar to:** Immu-C

# KIDNEY AND BLADDER SUPPORT

**Benefits:** The ingredients in this blend are designed for Kidney and Bladder support. Benefits may include improved function in blood pressure and blood sugar; along with goldenrod to help flush kidney stones out and stop inflammatory diseases of the urinary tract.

**System Supported:** Kidneys, Bladder

**Active Ingredients:** Raw Kidney concentrate, Raw Liver Concentrate of a bovine source, not an extract, Uva-Ursi (leaf), Echinacea purpurea (root), Goldenrod (aerial parts) (Solidago), Disodium Phosphate, and Juniper (berry); Dicalcium phosphate

**Suggested dosage:** 1-3x daily

**Similar to:** Rena Plus

## LIGAMENT SUPPORT

**Benefits:** This formula will help support muscles and connective tissue. By combining L-lysine, boron, and bromelain, this blend is ideal to help improve stiffness, inflammation, arthritis, joint support, and soreness.

**System Supported:** Muscles, Connective Tissues

**Active Ingredients:** Calcium (as Lactate, Dicalcium Phosphate) 4mg, Phosphorus (as Dicalcium Phosphate) 29mg, Magnesium (as Citrate) 2mg, Manganese (as Sulfate) 11mg, Citrus Bioflavonoids 50mg, Pancreatin (8X) 12mg, L-Lysine 5mg, Ox Bile 5mg, Spleen (Bovine)\* 5mg, Thymus (Bovine)\*5mg, Betaine HCl 2mg, Boron (as Amino Acid Chelate) 100mcg, Bromelain 600 GDU/mg 0.3mg

**Suggested dosage:** 1-3x daily

**Similar to:** Liga Plus

## LIVER SUPPORT

**Benefits:** Liver support is for individuals experiencing symptoms of decreased liver functions. Vitamin A, Dandelion, and Choline Bitartrate, have been seen to reduce fatty necrosis of the liver, reduce stress on the liver, support production of bile, and improve epigenetic regulation of gene expression which are all crucial to liver development and function.

**System Supported:** Liver

**Active Ingredients:** Vitamin A (100% as Beta-Carotene) 1,000 IU, Liver (of a bovine source, not an extract) 350mg, Dandelion (root) 50mg, Oregon Grape (root) 50mg, Barberry (root) 50mg, Choline Bitartrate 10mg, Inositol 10mg, Betaine HCl 10mg, Disodium Phosphate, Calcium

**Suggested dosage:** 1-3x daily

**Similar to:** Hepachol

## LUNG SUPPORT

**Benefits:** This formula is designed to support the lungs and immune system. When experiencing blockage or impairment in the lungs, this combination of vitamins and antioxidants are used to support Lungs, Lymph nodes and Thymus.

**System Supported:** Lungs, Immune

**Active Ingredients:** Vitamin A (as palmitate) 8,000 IU, Vitamin C (Ascorbic Acid) 16 mg, Vitamin B (as Calcium Pantothenate) 15 mg, Lung 75 mg, Adrenal 55 mg, Lymph30 mg of bovine source, not from an extract, Eucalyptus 30 mg, Thymus\*\* 20 mg, Psyllium husk 1 mg

**Suggested dosage:** 1-3x daily

**Similar to:** Pneumo Plus

## MG / K (3.9X)

**Benefits:** This potent formula is a concentrated blend of seven distinct forms of magnesium, each meticulously chosen for their unique benefits and unparalleled utilization by the body. MAG7® is ingeniously bound in potassium, a vital mineral that provides enhanced and balanced support for your cells, promoting overall cellular health.

**System Supported:** Autonomic Nervous System, Adrenal Glands, Muscles, Blood Sugar, Bone and DNA

**Active Ingredients:** Magnesium 500mg (from Magnesium Aspartate, Taurate, Orotate, Glycinate, Malate, Chelate, Citrate), Potassium 39 mg (from Potassium Aspartate Complex), Colostrum 40 mg

**Suggested dosage:** 2 capsules daily

**Similar to:** MG/K ASPARTATE

## MOLD RX

**Benefits:** This formulation is used for detoxification of different molds. Oregano, Chaga, Sage and other ingredients are combined to produce a powerful antifungal, antibacterial and anti-inflammatory effect against mold influence.

**System Supported:** Detox - Mold

**Active Ingredients:** Wild oregano extract 200mg, Pau D'Arco (bark) 100 mg, Chaga Mushroom 75mg, Sage Leaf 50mg, Mullein Leaf 50 mg, Stinging Nettle 50mg, Oxbile 25 mg, Fulvic/Humic 35 mg

**Suggested dosage:** 1-3 x daily

**Similar to:** Mold X

### OVARY UTERUS SUPPORT

**Benefits:** This blend supports the female reproductive system. Blue cohosh, zinc and phosphorus help to regulate women's cycles and alleviate muscle spasms and may reduce risk for certain cancers

**System Supported:** Female Reproductive System

**Active Ingredients:** Calcium (as Dicalcium Phosphate) 26mg, Phosphorus (as Dicalcium Phosphate) 21mg, Zinc (as Citrate) 5mg, Ovary (Bovine) 100mg\*, Uterus (Bovine) 100mg\*, Blue Cohosh Root 1mg

**Suggested dosage:** 1-3x daily

**Similar to:** Ovary Uterus Plus

### PARA X

**Benefits:** This formulation is intended to eliminate parasites from the body through detox. Ingredients like black walnut and wormwood are used to treat parasitic worm infections naturally.

**Active Ingredients:** Black Walnut (hull) 100mg, Pumpkin Powder (seed) 100mg, Wormwood Powder (aerial parts) 100mg, Hyssop Powder (aerial parts) 50mg, Thyme (leaf) 50mg, Pancreatin 31mg, L-Lysine 25mg, Ox Bile 25mg, Pepsin 17mg, Cellulase 2mg, Bromelain 84 MCU, Neem leaf powder 50 mg

**Suggested dosage:** 1-3x daily

**Similar to:** Para Plus

### PROSTATE SUPPORT

**Benefits:** This formulation is beneficial to the prostate and male reproductive systems. With ingredients like chaga, boron, and betaine, it encourages anti-inflammation and proper function.

**System Supported:** Prostate

**Active Ingredients:** Magnesium (as Citrate) 3mg, Zinc (as Amino Acid Chelate) 15mg, Molybdenum (as Amino Acid Chelate) 50 mcg, Potassium (as Aspartate) 4mg, Boron (as Amino Acid Chelate) 250 mcg, Prostate (Bovine) 90 mg\*, Juniper Berry 50mg, Chaga Mushroom 20mg, Betaine HCl 5mg, Saw Palmetto Berry 15mg

**Suggested dosage:** 1-3x daily

**Similar to:** Prosta Plus

### SPLEEN SUPPORT

**Benefits:** This formulation is beneficial for liver, kidney, and spleen issues. By using dandelion and nettle, this blend helps the endocrine system including the spleen.

**System Supported:** Lymphatic, Blood

**Active Ingredients:** Vitamin E (as dl-alpha Tocopheryl Acetate) 75 IU, Bovine Spleen Concentrate 250mcg, Dandelion (aerial parts) 75mg, Nettle (root) 75mg"

**Suggested dosage:** 1x daily

**Similar to:** Alpha E Spleen

### THYROID SUPPORT

**Benefits:** When thyroid support is abnormal, the body will call for Thyroid Support. By combining iodine and certain concentrates, they provide the necessary nutrients for proper thyroid function.

**System Supported:** Thyroid, Adrenal Glands

**Active Ingredients:** Iodine (from Kelp) 900mcg, Raw Bovine Thyroid Concentrate (Thyroxine free) 60mg, Porcine Adrenal Concentrate 30mg, Raw Bovine Pituitary Concentrate 10mg, Raw Porcine Spleen Concentrate 10mg, Kelp 180mg

**Suggested dosage:** 1-3x daily

**Similar to:** Thyro Plus

# Notes

This image shows a blank sheet of white paper with horizontal ruling lines. The lines are evenly spaced and run across the width of the page. There are no margins, text, or other markings on the paper.



CUSTOM  
COMPLETE

# INDIVIDUAL INGREDIENTS

\* Custom Complete Individual Ingredients are not available for purchase

Our Custom Complete Builder allows you to create a supplement by combining blends and ***individual ingredients*** to your customized supplement. These ingredients are uniquely sourced and of the best quality we could find. Suggested use and dosage are different for each ingredient.

## ALFALFA

**Type:** Hormonal Support, Antioxidant, Blood Health, Anti-inflammatory

**Standard dose:** 100-1000 mg (base dose: 200 mg)

**Suggested use:** Alfalfa may support hormonal balance, antioxidant activity, blood health, and help with inflammation.

**Benefits:** Alfalfa is known for its potential to help lower cholesterol levels and may offer benefits for blood sugar management. It is commonly used to help relieve symptoms of menopause and is rich in antioxidants. Additionally, alfalfa provides essential nutrients like vitamin K, copper, folate, and magnesium, which may contribute to overall health.\*

## ALOE VERA POWDER

**Type:** Antioxidant, Digestive Health, Anti-inflammatory

**Standard dose:** 250mg

**Suggested use:** Aloe Vera Powder may support digestive health, help manage blood sugar levels, and provide antioxidant and anti-inflammatory benefits.

**Benefits:** Aloe Vera Powder is known for its antibacterial and antioxidant properties. It may help relieve symptoms associated with diabetes, such as lowering blood sugar levels, and may support skin health and gastrointestinal movement. Additionally, it could aid in managing other inflammatory conditions within the digestive system.\*

## ASHWAGANDHA (TINCTURE)

**Type:** Stress Relief, Antioxidant, Anti-inflammatory

**Standard dose:** 600mg

**Suggested use:** Ashwagandha Tincture may support stress relief, help manage anxiety levels, and offer antioxidant and anti-inflammatory benefits.

**Benefits:** Ashwagandha is commonly used to help alleviate anxiety and stress. It may also provide anti-inflammatory and antioxidant effects, and could support blood sugar regulation and improve respiratory health.\*

## ASTRAGALUS

**Type:** Immune Support, Antioxidant, Organ Health

**Standard dose:** 9 to 30 grams per day

**Suggested use:** Astragalus may support immune function, help manage blood sugar levels, and provide antioxidant protection. It could also assist in promoting heart, kidney, and liver health.

**Benefits:** Astragalus is commonly used for its ability to protect and support the immune system through its antioxidant properties. It may help improve heart, kidney, and liver function and has been widely used to assist in controlling blood sugar levels.\*

## BLACKCURRANT EXTRACT

**Type:** Immune Support, Heart Health, Anti-inflammatory

**Standard dose:** 500 mg

**Suggested use:** Blackcurrant Extract may support the immune system, help improve blood flow to the heart, and provide anti-inflammatory benefits.

**Benefits:** Blackcurrant Extract is rich in anti-inflammatory, antiviral, antiseptic, antimicrobial, and antitoxic properties. It may boost immune system function and protect against heart disease. The omega fats and flavonoids in blackcurrant berries may help improve blood flow to the heart and support overall cardiovascular health.\*

# BROCCOLI CONCENTRATE

**Type:** Antioxidant & Detox Support

**Standard dose:** 100–200 mg (standardized for sulforaphane) Dose Range: 100–400 mg

**Suggested use:** Broccoli concentrate provides a concentrated source of sulforaphane, a compound that activates the body's detoxification pathways and supports cellular health. It is often used for its antioxidant and hormone-balancing effects.

**Benefits:** Rich in sulforaphane, broccoli concentrate supports the body's natural detoxification processes, helps balance estrogen levels, and promotes cellular protection. It may contribute to overall immune resilience and long-term health maintenance.\*

# CAMU CAMU

**Type:** Immune Support, Anti-inflammatory, Blood Sugar Support

**Standard dose:** 2,500 mg

**Suggested use:** Camu Camu may help fight inflammation, improve blood sugar levels, and support overall immune function.

**Benefits:** Camu Camu is rich in ascorbic acid (vitamin C) and is often used to help combat viral infections. It may also support weight loss by controlling blood sugar levels and reducing inflammation.\*

# CAPE ALOE

**Type:** Digestive Health, Wound Healing, Anti-inflammatory

**Standard dose:** 15 mg Dose Range: 15 mg - 30 mg

**Suggested use:** Cape Aloe may support wound healing, digestive health, and provide antioxidant and anti-inflammatory benefits.

**Benefits:** Cape Aloe is primarily used to treat a variety of conditions such as wounds, burns, eczema, and psoriasis. It also functions as an herbal laxative that may help regulate bowel movements and support overall digestive health. This herb is sometimes referred to as an intestinal cleanser due to its digestive benefits.

# CATS CLAW

**Type:** Immune Support, Anti-inflammatory, Antibacteria

**Standard dose:** 30mg Dose Range: 30 mg - 500 mg

**Suggested use:** Cat's Claw may support immune health, relieve inflammation, and fight off infections.

**Benefits:** Cat's Claw is commonly used for its anti-inflammatory properties, particularly for conditions like arthritis and gastrointestinal inflammation. This herb also exhibits antibacterial, antifungal, and antiviral properties, making it useful in helping the body fight off persistent infections.\*

# CHAGA +

**Type:** Antioxidant, Blood Sugar Support, Anti-inflammatory

**Standard dose:** 2000mg Dose Range: 1000 mg - 2000 mg

**Suggested use:** Chaga may help support healthy blood sugar levels, lower cholesterol, and manage blood pressure.

**Benefits:** Chaga is commonly used for its antioxidant and anti-inflammatory properties. It may help lower blood sugar and cholesterol levels and support healthy blood pressure. Additionally, Chaga is often used in managing arthritis symptoms and may play a role in slowing down the progression of cancer cells.\*

# CILANTRO

**Type:** Detox, Antimicrobial, Anti-inflammatory

**Standard dose:** 200 - 500 mg (use 50 mg base) Dose Range: 200 mg - 500 mg

**Suggested use:** Cilantro may help with detoxification by removing heavy metals from the body. It may also support immune health by reducing harmful bacteria.

**Benefits:** Cilantro is known for its ability to help remove metals such as mercury, lead, and aluminum from the body. By aiding in the detoxification process, it may improve the effectiveness of antibiotics and antiviral medicines. Additionally, cilantro may support heart health, boost energy levels, and offer benefits for individuals with diabetes.\*

# CINNAMON 20:1

**Type:** Antioxidant, Anti-inflammatory, Blood Sugar Support

**Standard dose:** 1000mg Dose Range: 500 mg - 1000 mg

**Suggested use:** Cinnamon may help lower blood sugar levels and improve insulin sensitivity. It may also offer support for heart health and act as a powerful antioxidant.

**Benefits:** Cinnamon is well-known for its antioxidant properties and its ability to support blood sugar regulation, reduce the risk of heart disease, and improve insulin sensitivity. The anti-inflammatory effects of cinnamon may also help lower the risk of neurodegenerative diseases and other health conditions.\*

# COENZIME Q10

**Type:** Heart Health, Antioxidant

**Standard dose:** 200mg Dose Range: 100 mg - 200 mg

**Suggested use:** Coenzyme Q10 may support heart health, improve exercise performance, and assist with migraines. It is also believed to reduce oxidative damage and may play a role in cancer prevention and treatment.

**Benefits:** CoQ10 is known for its potential to improve heart health, enhance exercise performance, and reduce the frequency and intensity of migraines. Its antioxidant properties may help protect against oxidative damage and support overall cellular health.\*

# COLOSTRUM POWDER

**Type:** Immune Support, Gut Health

**Standard dose:** 1000mg Dose Range: 500 mg - 1,000 mg

**Suggested use:** Colostrum Powder may support immune system function and improve gut health. It is rich in immunoglobulin G (IgG), a powerful antibody that helps enhance the body's immune response.

**Benefits:** Colostrum Powder is high in IgG, an antibody that plays a key role in supporting the immune system. It has also been shown to help with gut health, potentially improving the body's ability to repair tissue and support growth factors.\*

# FULVIC ACID

**Type:** Allergy Support, Anti-Inflammatory, Brain Health

**Standard dose:** 150 mg 150 mg Dose Range: 250 mg - 500 mg

**Suggested use:** Fulvic Acid may help with reducing inflammation, improving brain function, and supporting overall immune health. It might also aid in blocking reactions that cause allergy symptoms and reduce swelling.

**Benefits:** Fulvic acid may help alleviate allergy symptoms by blocking reactions in the body that trigger these responses. It has been shown to have potential benefits for brain health, possibly slowing or preventing the progression of neurodegenerative diseases like Alzheimer's. Additionally, fulvic acid might help reduce swelling and has been explored for its potential anticancer properties.\*

# GABA

**Type:** Stress Management, Mood Support, Sleep

**Standard dose:** 100 mg Dose Range: 100 mg - 300 mg

**Suggested use:** GABA may support relaxation, mood regulation, and muscle tone while helping stabilize blood pressure. It has been explored for its calming effects on anxiety and its potential to aid in sleep and stress relief.

**Benefits:** GABA is a naturally occurring amino acid that helps promote sleep, alleviate anxiety, and protect the brain by producing a calming effect. It may help reduce symptoms of PMS, ADHD, and support lean muscle growth. Additionally, GABA may aid in stabilizing blood pressure and relieving certain types of pain.\*

## GARLIC

**Type:** Antioxidant, Digestive Health, Anti-inflammatory

**Standard dose:** 200mg

**Suggested use:** Isoniazid, NNRTIs, Saquinavir, Estrogens, Cyclosporine, Anticoagulant

**Benefits:** Garlic Powder is known to help regulate blood pressure, lower cholesterol levels, improve the immune system, reduce the risk of certain cancers, and aid in digestion and include many more benefits. This ingredient is nutrient rich and has many beneficial bioactive compounds.

## GINGER ROOT

**Type:** Digestive Support, Anti-inflammatory, Blood Sugar Support

**Standard dose:** 500 mg Dose Range: 500 mg - 2,000 mg

**Suggested use:** Ginger root may support digestive health, aid in weight loss, and help maintain healthy cholesterol and insulin levels.

**Benefits:** Ginger is widely known for its anti-nausea properties. It may also help with digestion, support weight loss, and exhibit antibacterial and anti-inflammatory effects. Additionally, ginger has been shown to help slow down the growth of some cancers and support healthy insulin and cholesterol levels.

## GRAVIOLA

**Type:** Antioxidant, Anti-inflammatory, Immune Support

**Standard dose:** 500 - 1,500 mg Dose Range: 500 mg - 1,500 mg

**Suggested use:** Graviola may support antioxidant activity, help maintain healthy blood sugar and blood pressure levels, and promote overall immune health.

**Benefits:** Graviola is rich in antioxidants that may help prevent and fight cancer, kill certain cancer cells, reduce inflammation, and fight off bacteria. It has also been studied for its potential to improve stomach ailments, support the immune system, and aid in treating parasitic infections and hypertension.\*

## GREEN TEA

**Type:** Antioxidant, Metabolism Support, Cognitive Function

**Standard dose:** 676 mg Dose Range: 676 mg

**Suggested use:** Green Tea may help support cognitive function, boost metabolism, and aid in cardiovascular health.

**Benefits:** Green Tea is known for its high levels of polyphenols, which may improve cognitive function, boost metabolism, and decrease the risk of cardiovascular disease. It has additional benefits including supporting weight loss, aiding digestion, improving heart health, and potentially supporting the management of type 2 diabetes and Alzheimer's disease.\*

## GLUTATHIONE

**Type:** Antioxidant, Immune Support, Liver Health

**Standard dose:** 600mg Dose Range: 600 mg

**Suggested use:** Glutathione may support the immune system, assist in detoxification, and contribute to liver health by metabolizing toxins.

**Benefits:** Glutathione is a tripeptide that serves various functions in the body. It acts as a powerful antioxidant, breaking down free radicals, and supports immune function. It also regenerates vitamins C and E, activates certain enzymes, aids the liver and gallbladder in processing fats, and helps metabolize some toxins. Additionally, glutathione plays a role in DNA creation and repair.

## HAWTHORN BERRY PE 1/8% FLAVONES

**Type:** Heart Health, Circulation

**Standard dose:** 50-100 mg Dose Range: 50-100 mg

**Suggested use:** Supports cardiovascular health by enhancing blood flow and reducing the symptoms of heart disease, high blood pressure, and high cholesterol.

**Benefits:** Hawthorn berry is rich in antioxidants and is commonly used to protect against heart disease and support heart health. It may help manage high blood pressure, reduce symptoms of heart failure, and improve circulation in conditions like swollen legs and feet. Additionally, hawthorn may support better sleep by alleviating insomnia. Human studies suggest that hawthorn increases coronary artery blood flow.\*

## INNOSLIM

**Type:** Blood Sugar and Lipid Metabolism

**Standard dose:** 250 mg Dose Range: 250 mg

**Suggested use:** Supports healthy blood sugar regulation and lipid metabolism by enhancing adiponectin levels and increasing AMPK activity.

**Benefits:** InnoSlim® is a compound extracted from highly fractionated Panax notoginseng and Astragalus membranaceus using a proprietary pharmaceutical extraction technology. It is the only nutraceutical that has been shown to increase adiponectin levels and AMPK activity, while also lowering glucose levels in healthy obese and pre-diabetic individuals with hyperlipidemia.\*

## LIONS MANE

**Type:** Cognitive and Mental Health

**Standard dose:** 200mg Dose Range: 200 mg

**Suggested use:** Supports brain health, reduces anxiety and depression symptoms, and provides anti-inflammatory and antioxidant benefits.

**Benefits:** Research has shown that Lion's Mane may protect against dementia, reduce mild symptoms of anxiety and depression, and help repair nerve damage. This ingredient is also recognized for its strong anti-inflammatory, antioxidant, and immune-boosting properties. Additionally, studies in animals suggest that it may lower the risk of heart disease, cancer, ulcers, and diabetes.\*

## L-THEANINE

**Type:** Antioxidant / Wellbeing

**Standard dose:** 200mg Dose Range: 200 mg - 400 mg

**Suggested use:** Supports stress relief, anxiety reduction, boosts focus, enhances immunity, and may help support blood pressure and improve sleep.

**Benefits:** L-Theanine is known for promoting relaxation and reducing stress and anxiety. It also boosts focus and enhances immunity by reducing inflammation. This ingredient may help support healthy blood pressure levels and improve sleep quality. Often added as a powerful antioxidant, L-Theanine is commonly used in ENOX2 therapy treatments to boost effectiveness.\*

## MILK THISTLE

**Type:** Liver Health / Detox

**Standard dose:** 420 mg Dose Range: 200 mg - 420 mg

**Suggested use:** Supports liver and gallbladder health, promotes detoxification.

**Benefits:** Historically, milk thistle has been used for liver disorders and gallbladder problems. It is promoted as a dietary supplement to support conditions such as hepatitis, cirrhosis, jaundice, and indigestion. Milk thistle is considered beneficial for liver protection and detoxification.\*

## NAD +

**Type:** Anti-Aging / Cellular Health

**Standard dose:** 100 - 300mg Dose Range: 100 mg - 300 mg

**Suggested use:** Supports DNA repair, cell rejuvenation, and anti-aging processes..

**Benefits:** NAD+ plays a crucial role in many biological processes in the body, such as activating reactions within cells and facilitating DNA repair. NAD+ treatments help not only with the cosmetic aspects of aging and cell rejuvenation but can also reduce the risks of age-related diseases.\*

### NMN- NICOTINAMIDE MONONUCLEOTIDE

**Type:** Anti-Aging / Cellular Health

**Standard dose:** 250 mg Dose Range: 250 mg

**Suggested use:** Supports high blood pressure regulation, liver health, and metabolism.

**Benefits:** NMN supplements stimulate the activity of mitochondria, which are vital to our metabolism. As the powerhouses of cells, mitochondria transform glucose and oxygen into cellular energy—without them, cells would lack energy and ultimately die. NMN is essential for mitochondrial health and supports overall cellular function.\*

### RED GINSENG

**Type:** Immune Support / Energy

**Standard dose:** 200mg-400mg Dose Range: 200 mg - 400 mg

**Suggested use:** Supports immune system function, enhances energy levels, and promotes blood sugar regulation.

**Benefits:** Red Ginseng may help increase insulin production, enhance blood sugar uptake in cells, and provide powerful antioxidant protection. Additionally, it may improve energy production and boost overall immune system health.\*

### RED PROPOLIS

**Type:** Immune & Inflammatory Support

**Standard dose:** 500 mg Dose Range: 500 mg

**Suggested use:** Red Propolis is a resin derived from Brazilian red bees, known for its powerful antioxidant and anti-inflammatory properties. It may help support immune function, reduce inflammation, and promote overall cellular health. Additionally, it has been traditionally used for its potential to support skin health and combat oxidative stress.

**Benefits:** Red Propolis may assist in boosting the immune system and reducing inflammation throughout the body. It could also support skin health, combat oxidative stress, and promote general wellness. Its antioxidant properties may help protect cells from damage and support the body's natural healing processes.\*

### ROSEMARY

**Type:** Brain Health / Skin & Hair Support

**Standard dose:** 100 mg Dose Range: 100 mg - 600 mg

**Suggested use:** Supports brain health, improves memory, and promotes healthy skin and hair growth.

**Benefits:** Rosemary has been used in traditional medicine for its astringent, tonic, carminative, antispasmodic, and diaphoretic properties. It is one of the oldest known medicinal herbs, historically used to enhance mental function and memory. Additionally, rosemary may be beneficial for skin health and promoting hair growth.\*

### PARSLEY

**Type:** Bone Health / Antioxidant, Blood Health, High in Vitamin K

**Standard dose:** 100 mg Dose Range: 200 mg - 800 mg

**Suggested use:** Diuretic, Anti-Inflammatory, Bone Health, Antioxidant

**Benefits:** Parsley works as a powerful natural diuretic, helping to reduce bloating and blood pressure. It is rich in vitamin K, which supports bone growth and mineral density. Parsley also contains high levels of beta carotene, folate, and vitamin B12 (methylcobalamin), which contribute to its antioxidant properties and overall health benefits.\*

# PHOSPHATIDYLCHOLINE

**Type:** Brain & Liver Support

**Standard dose:** 250–500 mg Dose Range: 250–1,200 mg

**Suggested use:** Phosphatidylcholine is a major component of cell membranes and is used to support cognitive function, liver detoxification, and fat metabolism. It may help maintain healthy lipid levels and support neurological health.

**Benefits:** Known for its role in supporting brain function and memory, phosphatidylcholine also aids in liver regeneration and fat metabolism. It contributes to maintaining healthy cell membranes and supports the production of neurotransmitters like acetylcholine.\*

# QUERCETIN

**Type:** Antioxidant / Heart Support, Immune System

**Standard dose:** 50 mg Dose Range: 50 mg - 500 mg

**Suggested use:** Supports heart health, reduces inflammation, and stabilizes histamine release for antihistamine benefits.

**Benefits:** Quercetin may help protect against heart disease and cancer. It stabilizes the cells that release histamine, providing both anti-inflammatory and antihistamine effects. As a powerful antioxidant, it supports overall health and reduces oxidative stress.\*

# SAW PALMETTO EXTRACT

**Type:** Prostate Health / Anti-inflammatory

**Standard dose:** 320mg Dose Range: 320 mg

**Suggested use:** Supports prostate health, reduces inflammation, and promotes urinary tract function. May aid in hair loss and increase testosterone levels.

**Benefits:** Saw Palmetto is used for improving prostate health, reducing inflammation, and aiding in urinary tract function. It may also help increase testosterone levels and reduce hair loss. Often used as a natural alternative to estrogen-based medications for certain conditions.\*

# SCELETIUM

**Type:** Mood Support / Neurocognitive

**Standard dose:** 15 mg Dose Range: 15-40 mg

**Suggested use:** Supports anxiety relief, mood enhancement, and may improve cognitive function. May assist in alleviating symptoms of depression.

**Benefits:** Scelletium tortuosum has been traditionally used for mood-altering purposes, especially for anxiety and depression relief. Clinical trials suggest potential anxiolytic (anxiety-relieving), antidepressant, and neurocognitive benefits.\*

# SHILAJIT

**Type:** Energy & Immunity Support

**Standard dose:** 300 mg Dose Range: 300 mg

**Suggested use:** Supports healthy testosterone levels, boosts energy, and promotes overall vitality. May also aid in combating chronic fatigue and signs of aging.

**Benefits:** Shilajit contains fulvic acid and over 84 minerals, offering numerous health benefits. It serves as a potent antioxidant to boost immunity, improve memory, reduce inflammation, increase energy, and act as a diuretic to help remove excess fluid from the body.\*

# STINGING NETTLE

**Type:** Antioxidant, Digestive Health, Anti-inflammatory

**Standard dose:** 500-1,500 mg Dose Range: 500-1,500 mg

**Suggested use:** Lithium, Diabetes, High Blood Pressure, Sedatives, Blood Thinners

**Benefits:** This herb has been used for many years to help treat inflammation, sore muscles, and joints, enlarged prostate and more. Other common issues Stinging Nettle may help with is blood sugar control, high blood pressure, anemia, gout, and urinary tract health.

# SUMA ROOT

**Type:** Adaptogen & Anti-Inflammatory

**Standard dose:** 500–1,500 mg Dose Range: 500-1,500 mg

**Suggested use:** Suma Root may support the body in managing chronic inflammation, high levels of cortisol, and cognitive function impairment. It may also act as an adaptogen to fight stressors such as bacteria, toxins, and mental stress.

**Benefits:** Suma Root is known for its adaptogenic properties, which help the body handle stressors like bacteria, toxins, and mental stress. It may provide relief from chronic inflammation and help with high cortisol levels. Additionally, it has been linked to potential benefits in cancer treatments and improving sexual dysfunction.\*

# TUMERIC ROOT EXTRACT 4:1

**Type:** Anti-inflammatory & Antioxidant Support

**Standard dose:** 400–600 mg Dose Range: 400–1,000 mg

**Suggested use:** Turmeric extract (4:1) offers a concentrated form of curcuminoids, known for their powerful anti-inflammatory and antioxidant properties. Often used to support joint health, digestion, and overall inflammation balance.

**Benefits:** Turmeric extract is commonly used for managing inflammation, reducing joint pain, and supporting liver health. Its antioxidant properties help neutralize free radicals, while its anti-inflammatory actions may benefit conditions like arthritis and digestive discomfort.\*

# VITAMIN C

**Type:** Antioxidant & Immune Support

**Standard dose:** 90 mg Dose Range: 90 mg

**Suggested use:** Vitamin C is a potent antioxidant that supports immune function, may reduce the risk of chronic diseases, and helps the body absorb iron. It can be beneficial in managing high blood pressure and reducing the risk of heart disease.

**Benefits:** Vitamin C is widely known for its ability to boost the immune system and prevent iron deficiency. It may help reduce the risk of chronic diseases such as heart disease, manage high blood pressure, lower uric acid levels, and prevent gout attacks. It may also play a role in the body's overall antioxidant defense system.\*

# VITAMIN E (MIXED TOCOPHEROLS)

**Type:** Antioxidant & Skin Nourishment

**Standard dose:** 2000mg Dose Range: 2000 mg

**Suggested use:** Vitamin E, a powerful antioxidant, is commonly used to support skin health, reduce oxidative stress, and maintain healthy cell function. It can balance oil production in the skin, nourish, and promote longer cell life.

**Benefits:** Vitamin E is known for its antioxidant properties, helping protect cells from oxidative damage. It may improve skin health by nourishing and balancing oil production. Additionally, it may contribute to longer cell life and has potential benefits for overall skin care.\*

## PRODUCT CATALOG

The information contained herein has not yet been evaluated by the Food and Drug Administration. All Products and Equipment presented or represented by Alive Innovations LLC, its entities, employees, associates and assigns are not intended to diagnose, treat, cure or prevent any disease. This information is for educational purposes and is not intended to make claims about any product or service.

\*Disclaimer: Limited to Healthcare Practitioners for clinical research purposes only. These statements have not been evaluated by the Food and Drug Administration. This product is not intended to diagnose, treat, cure, or prevent any disease

For more information call 800 454 1920 /  
i n f o @ a l i v e i n n o v a t i o n s . c o m

Contact info:  
[Sales@aliveinnovations.com](mailto:Sales@aliveinnovations.com)

General Information:  
[info@aliveinnovations.com](mailto:info@aliveinnovations.com)

Orders:  
[orders@aliveinnovations.com](mailto:orders@aliveinnovations.com)

Phone number: 800.454.1920

